

## Lensbury Avenue, SW6

£1,615 Per week

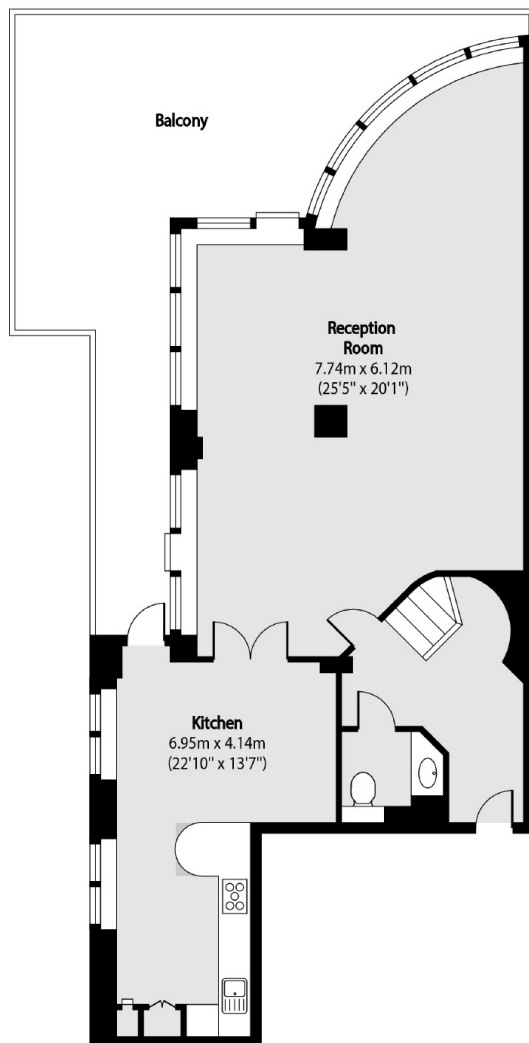
An amazing 1,900 sq ft three double bedroom split level penthouse with beautiful interiors and a large private terrace overlooking The Thames.

Marina Point is located in Imperial Wharf, this riverside development built by award winning developer St. George.

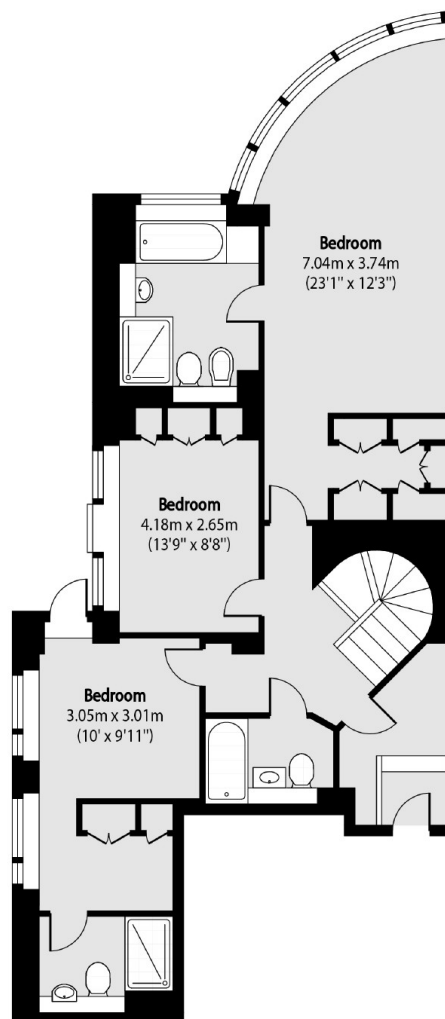
### Features

- Penthouse
- Three Bedrooms
- River Views
- Private Terrace
- Concierge
- Parking Space

# Lensbury Avenue, London, SW6



Sixth Floor



Seventh Floor

Total area (approx): 178.96 sq m (1926 sq. ft)

Balcony total area (approx): 40.33 sq m (434 sq. ft)