



Lensbury Avenue, SW6

£808 Per week

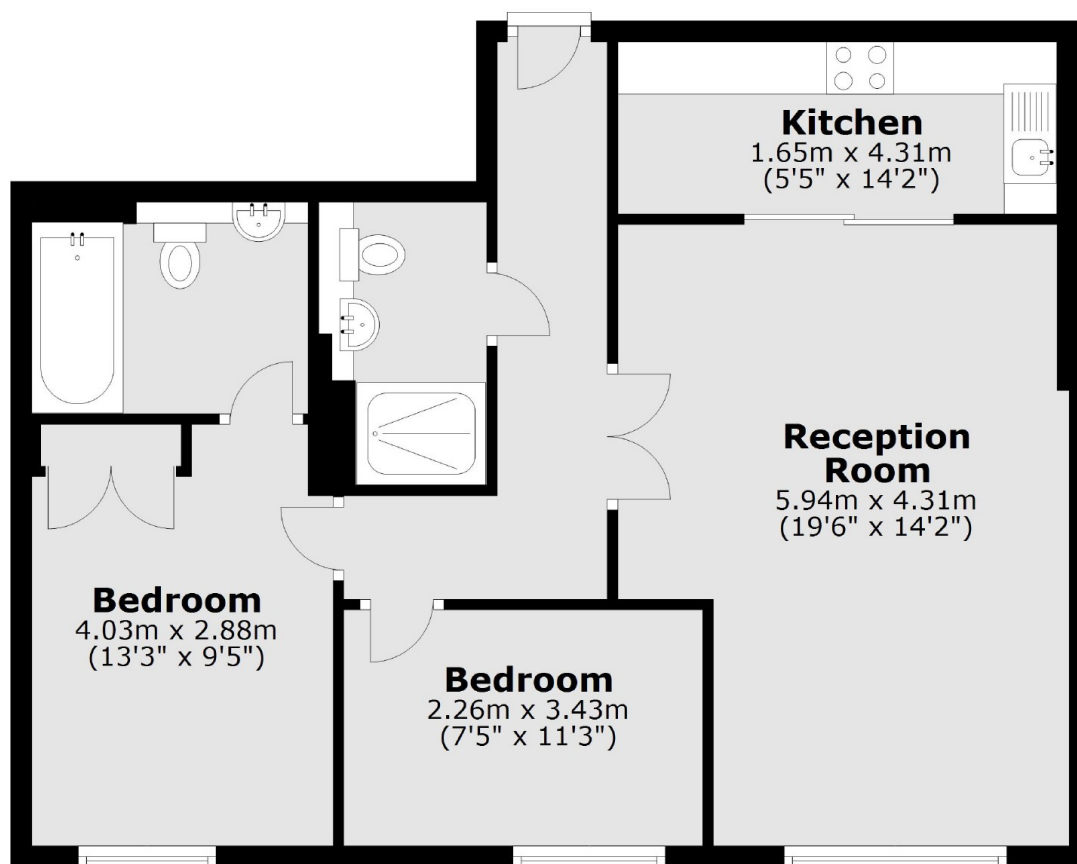
SHORT LET: A beautiful two double bedroom, two bathroom apartment with views of the river across landscaped gardens. Imperial Wharf is an award-winning riverside development with restaurants and a vibrant waterside pub.

Imperial Wharf overground station has links to the underground network at West Brompton (District Line) & Shepherds Bush (Central Line).

Features

- Two Double Bedrooms
- Bills Included
- 24 Hour Concierge
- Furnished
- Gym
- Available September

Lensbury Avenue, London, SW6



Total area: approx. 69.3 sq. metres (746.1 sq. feet)