

Lombard Road, SW11

£750 Per week

A spectacular two double bedroom apartment situated on the 19th floor with a private balcony in Lombard Wharf.

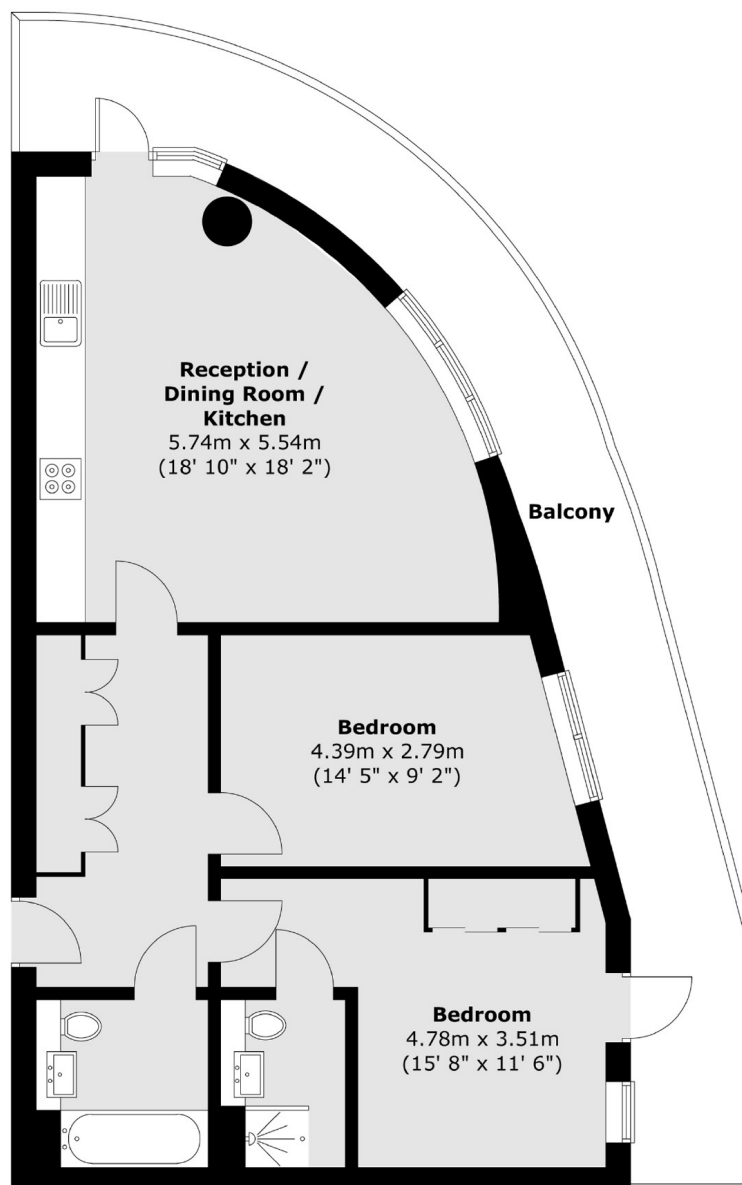
Lombard Wharf is situated within close proximity of Battersea Square's trendy shops, bars and restaurants and is within 0.6 miles of Clapham Junction station.

Features

- Two Double Bedrooms
- Furnished
- Balcony
- Gym
- 24 Hour Concierge
- River Views

Lombard Road, London, SW11

Nineteenth Floor



Total area (approx.) : 72.5 sq. m (780 sq. ft)
Total balcony area (approx.) : 24.5 sq. m (264 sq. ft)