



Admiral Square, SW10

£1,500 Per week

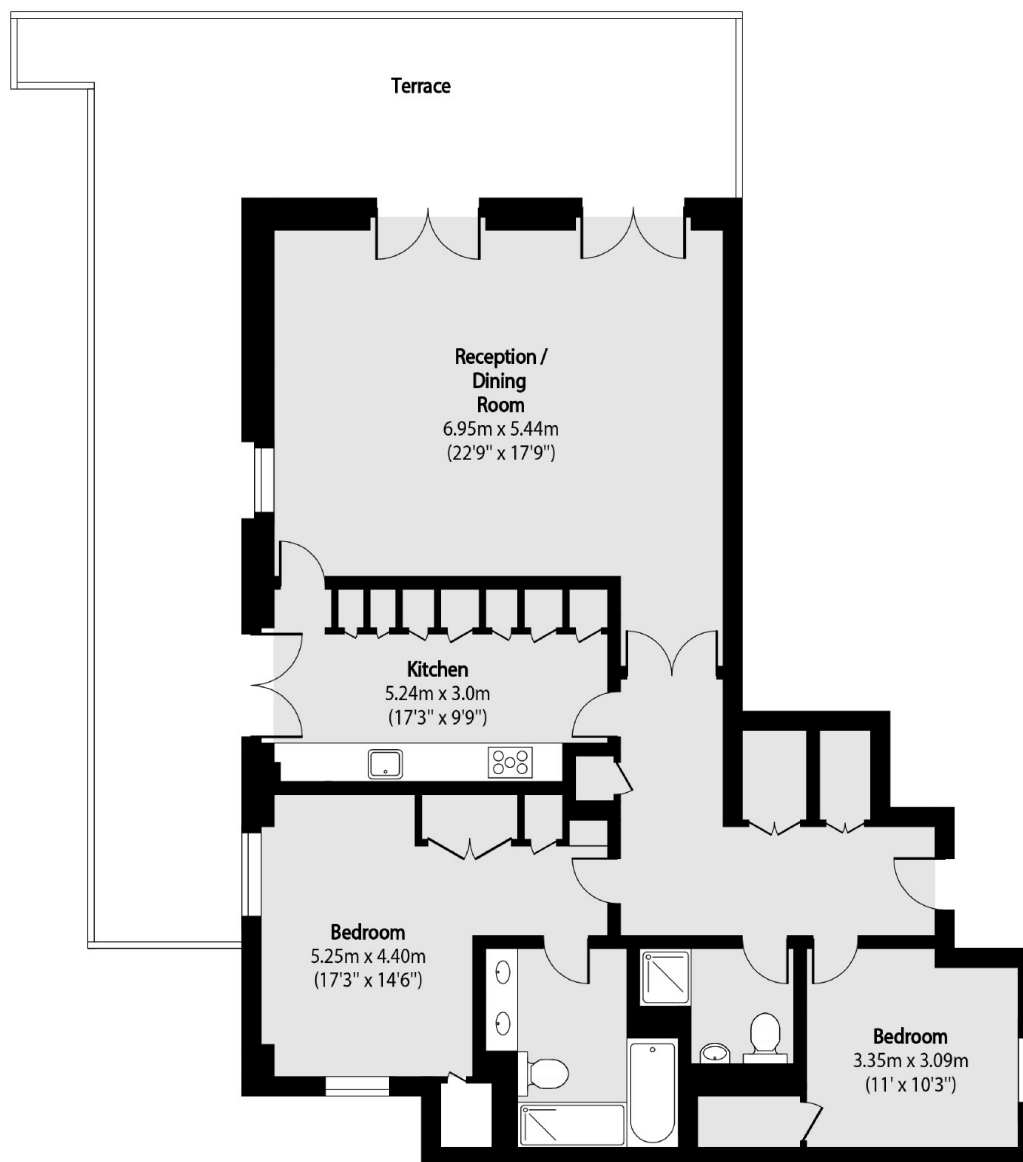
SHORT LET: A beautiful two double bedroom apartment located on the raised ground floor of Admiral Court with exceptional river views. The property benefits from a stunning wraparound terrace.

Close to Imperial Wharf perfect for commuters travelling into central London. Also close to the Thames water taxis for a more relaxed journey into work.

Features

- Two Bedrooms
- Bills Included
- Wrap around Terrace
- Underground Parking
- Porter
- Furnished

Admiral Square, London, SW10



Total area (approx): 123.12 sq m (1325 sq. ft)

Terrace total area (approx): 55.88 sq m (601 sq. ft)

Dexters

Chelsea Harbour
5 Design Centre East
London
SW10 OXF

020 7590 9515

Energy Rating: E. We aim to make our particulars both accurate and reliable. However they are not guaranteed; nor do they form part of an offer or contract. If you require clarification on any points then please contact us, especially if you're traveling some distance to view. Please note that appliances and heating systems have not been tested and therefore no warranties can be given as to their good working order.

 **RICS** | Regulated
Estate Agent
and Letting Agent

[dexters.co.uk](https://www.dexters.co.uk)