



York Road, SW11

£761 Per week

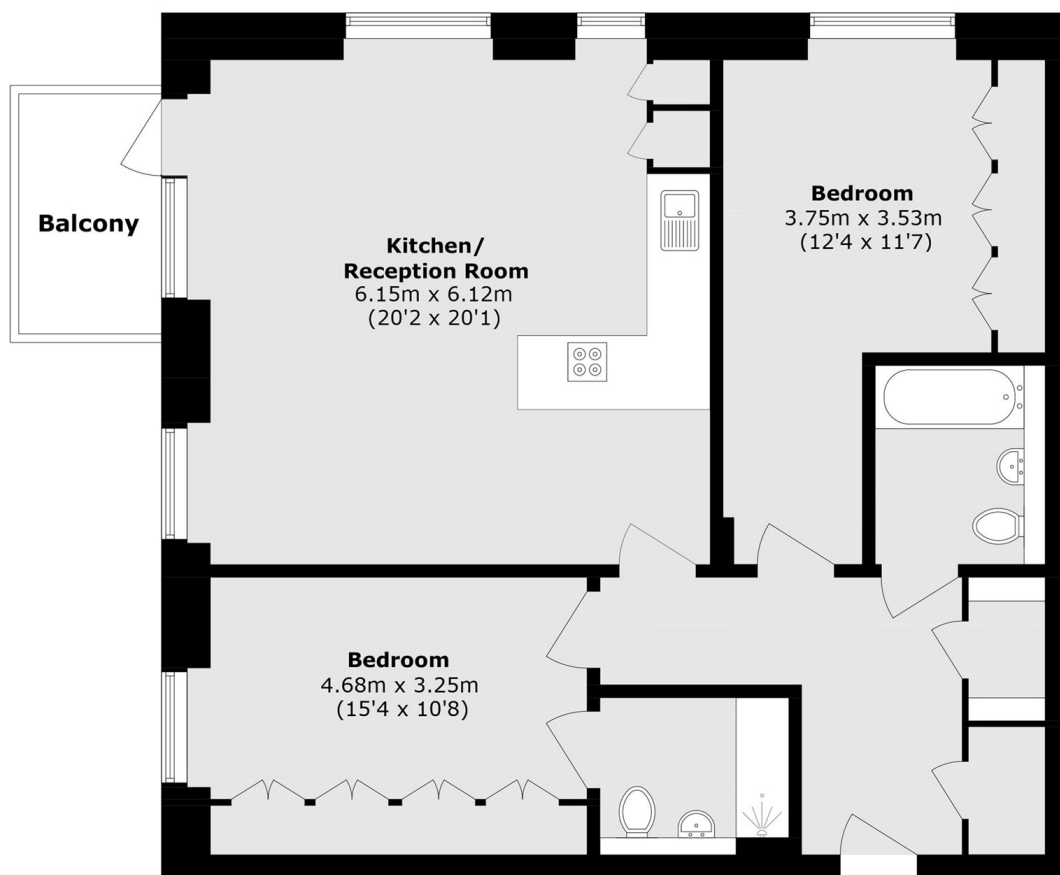
A modern two double bedroom, two bathroom, riverside apartment, on the 8th floor of a secure private development

Palmitine House is situated within close proximity of Battersea Square's trendy shops, bars and restaurants and is within 0.6 miles of Clapham Junction station.

Features

- Two Double Bedrooms
- Two Bathrooms
- Lift
- Concierge
- River Views
- Furnished

York Road, London, SW11



Eighth Floor

Total area (approx.): 95.9 sq. m (1032.2 sq. ft)

Balcony area (approx.): 4.6 sq. m (49.5 sq. ft)