



Fulham, SW6

£2,306 Per week

Dexters



Central Avenue, London, SW6

A spectacular five bedroom triplex apartment, with four bathrooms in this secure and sought after riverside development.

As you enter the property you are welcomed by a generous living area which comprises a large reception room, kitchen, and dining area. This property boasts five bedrooms, four bathrooms and underground parking spaces.

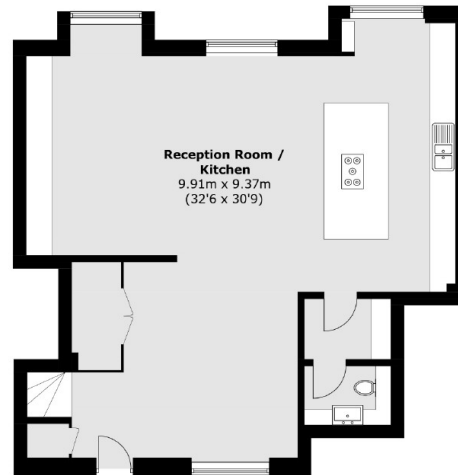
Fulham Riverside is perfectly located between South Park and Imperial Park, moments away from amenities such as Sainsburys, local cafés and restaurants and the prestigious Hurlingham Club

Features

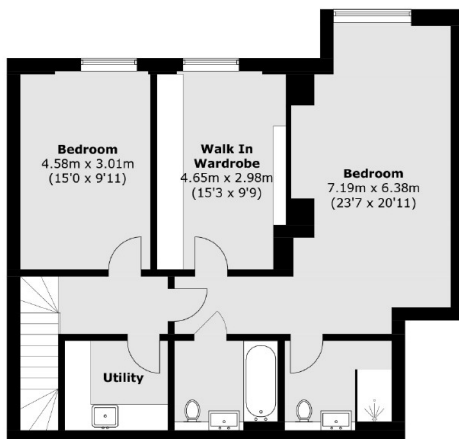
- Five Double Bedrooms
- Four Bathrooms
- Private Terrace
- Secure Parking
- 24 Hour Concierge
- Gym Access



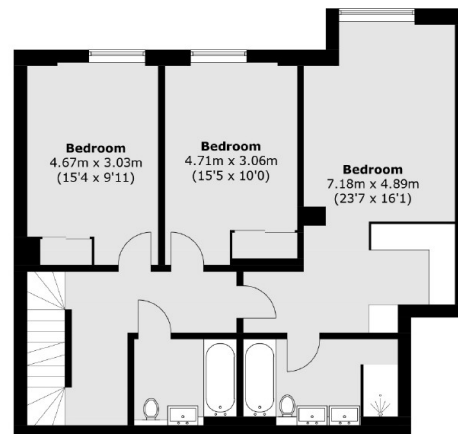
Central Avenue, London, SW6



Fourth Floor



Second Floor



Third Floor

Total area (approx.): 249.3 sq. m (2683.3 sq. ft)