

## Central Avenue, SW6

£1,500 Per week

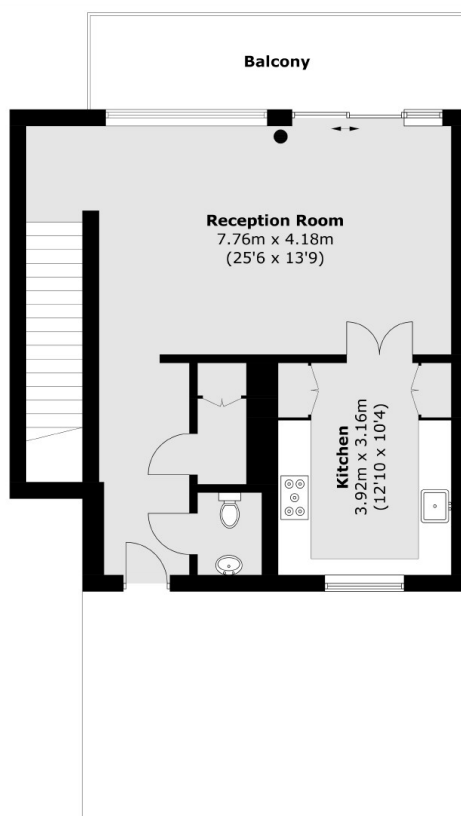
SHORT LET - An immaculate split level two double bedroom, two bathroom apartment set in the desirable Fulham Riverside development with direct river views, which benefits from landscaped communal gardens, 24-hour concierge and one parking space.

Fulham Riverside is perfectly located between South Park and Imperial Park, moments away from amenities such as Sainsburys, local cafés and restaurants and the prestigious Hurlingham Club.

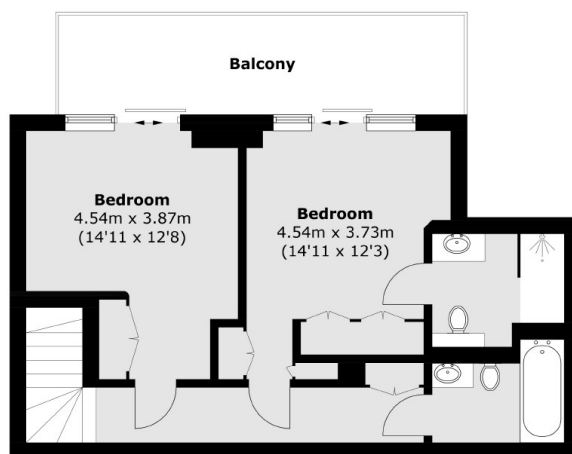
### Features

SHORT LET  
Two Double Bedrooms  
Private Terrace  
River Views  
24 Hour concierge  
Secure Parking  
Gym Access

# Central Avenue, London, SW6



## Third Floor



## Second Floor

Total area (approx.): 114.1 sq. m (1,228.1 sq. ft)  
Balconies: 25.2 sq. m (271.2 sq. ft)