



The Boulevard, SW6

£808 Per week

A well presented two double bedroom, two bathroom apartment located on the ninth floor within the prestigious Imperial Wharf development.

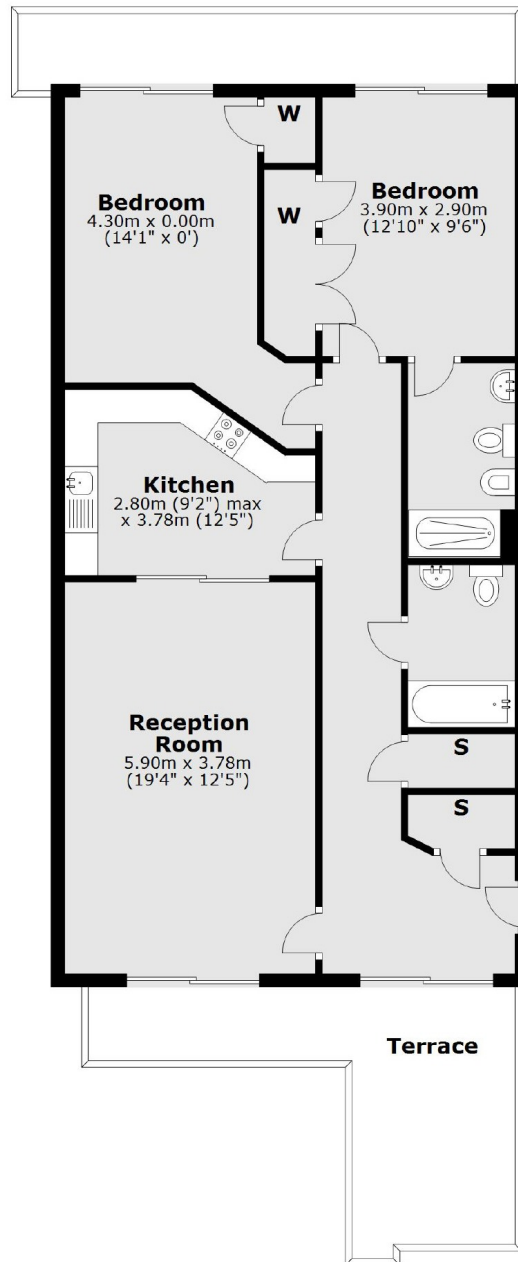
Imperial Wharf offers a number of excellent restaurants and bars and the river bus service provides access to Blackfriars and Putney Piers.

Features

- Riverside Apartment
- Two Bedrooms
- Two Bathrooms
- Spacious Reception
- Large Balcony
- Concierge And Gym

The Boulevard, London, SW6

9th Floor



Total area: approx. 89.5 sq. metres (963.3 sq. feet)