



Harbour Avenue, SW10

£1,350 Per week

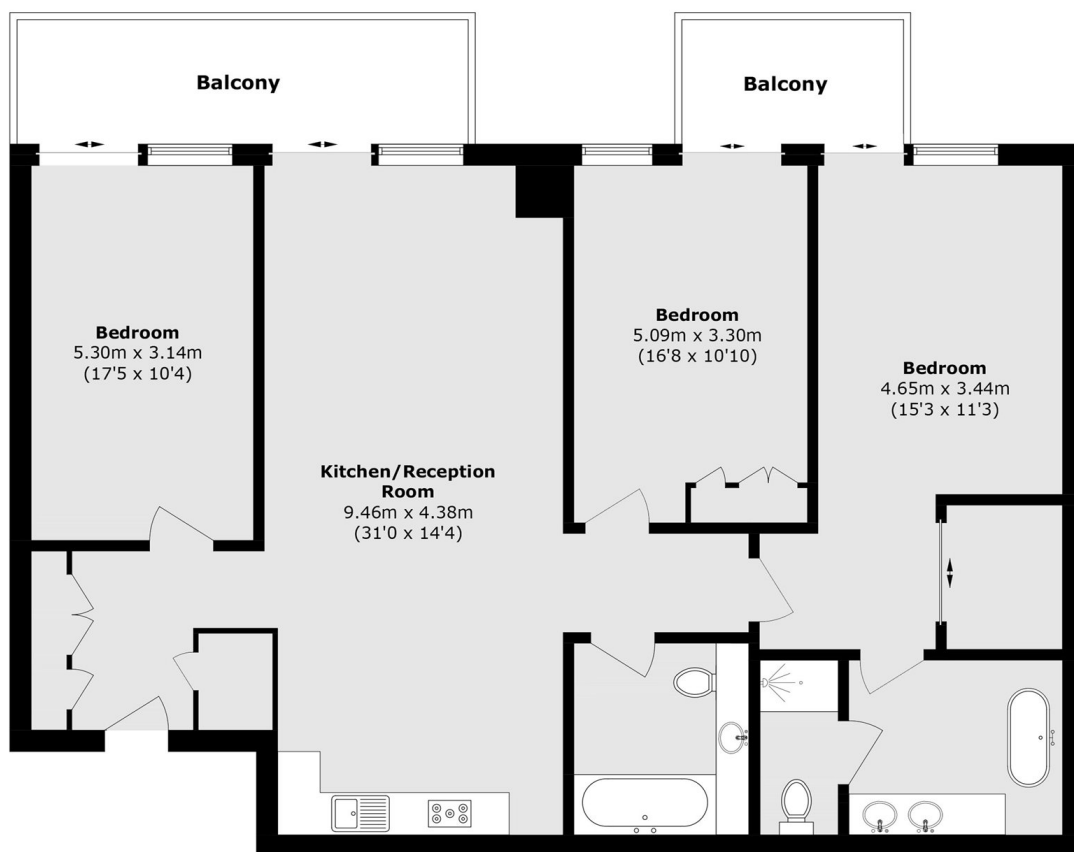
A furnished three bed two bath flat in the highly sought after Chelsea area. As a resident of Lighterman Towers, you have access to leisure facilities including a state-of-the-art gym, a private, landscaped roof-terrace and 24-hour security and concierge service.

Lighterman Towers has multiple transport links. Being a few minutes walk to Imperial Wharf station with access to the Overground and one stop to West Brompton with the District line. 24 hour buses run close by on the King's Road. Thames Clipper River services are on hand from Imperial Wharf to take you as far as Canary Wharf and Greenwich. One of the best ways to travel around London.

Features

- Three Bedrooms
- Two Bathrooms
- Private Balcony
- 24 hour concierge
- Gym
- Parking Separate

Harbour Avenue, London, SW10



First Floor

Total area (approx.): 132.5 sq. m (1426.2 sq. ft)

Balcony area (approx.): 16.7 sq. m (179.7 sq. ft)