



Harbour Avenue, SW10

£693 Per week

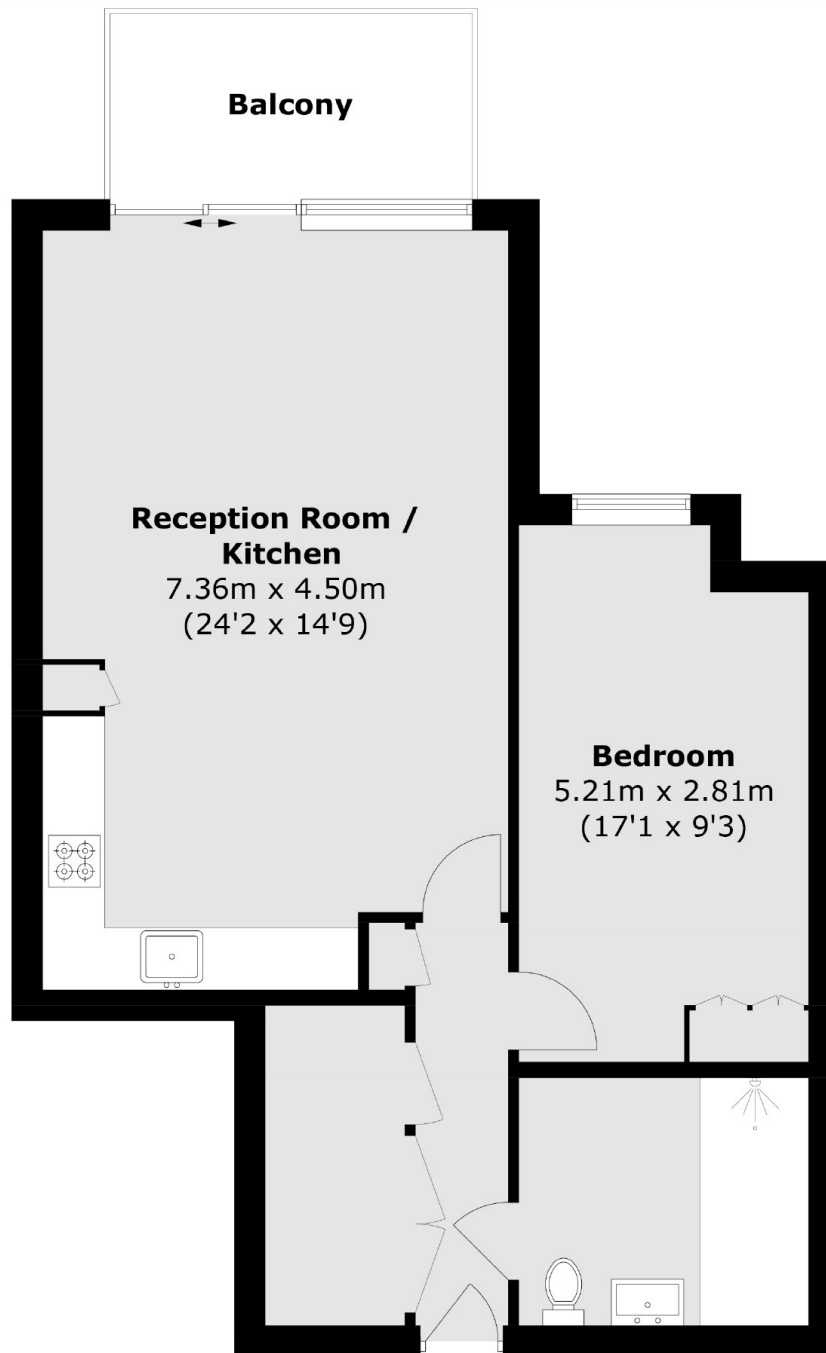
A stunning spacious one bedroom apartment located in the heart of this superb new Chelsea Island development. The property benefits from a high-spec open plan kitchen/reception overlooking communal gardens.

Chelsea Island is an exclusive development located next to the River Thames, Imperial Wharf railway station and river boats to the city are moments away.

Features

- New Build Apartment
- One Double Bedroom
- Balcony
- Residents Gym
- 24-Hour Concierge
- Imperial Wharf Station

Harbour Avenue, London, SW10



Total area (approx.): 63.0 sq. m (678.1 sq. ft)
Balcony: 6.3 sq. m (67.8 sq. ft)