

Park Street, SW6

£576 Per week

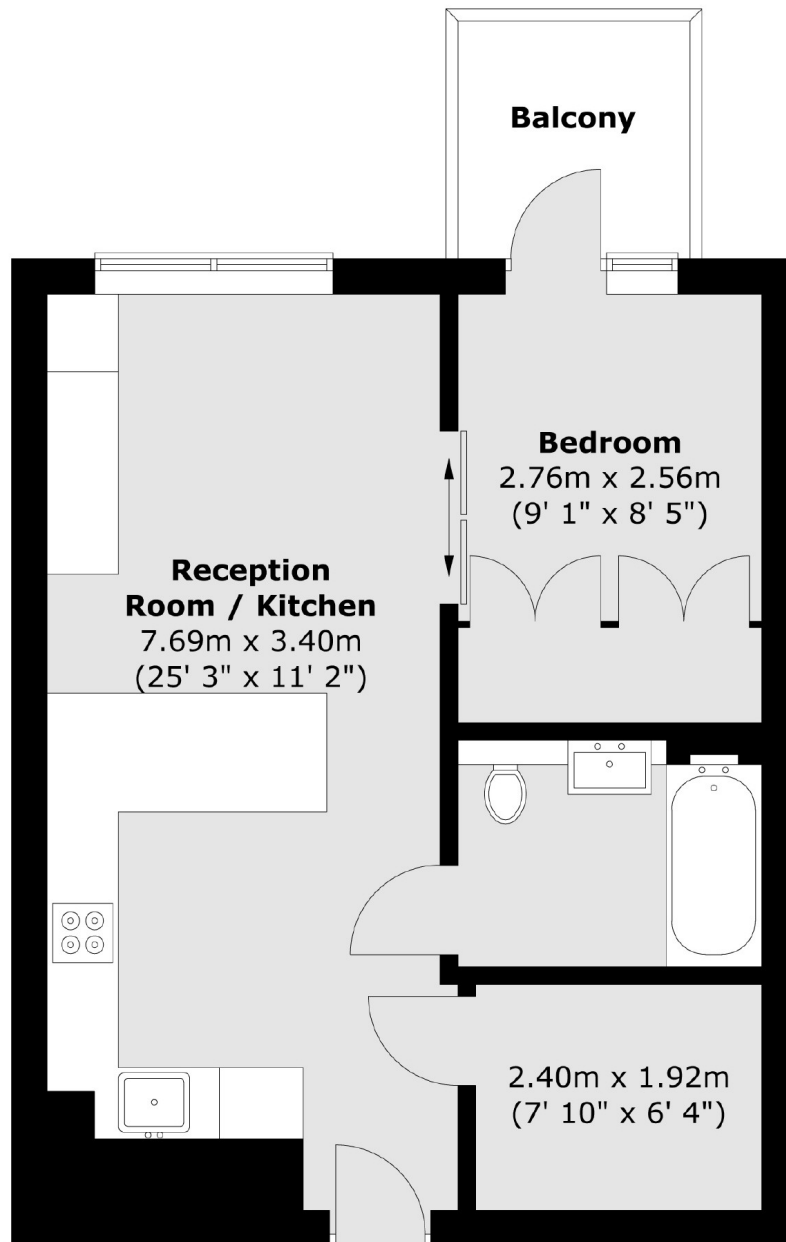
A modern Manhattan one bedroom apartment finished to a very high specification, located in the prestigious Chelsea Creek development with 24-hour concierge. The property comes furnished with private parking and a private balcony.

Chelsea Creek is ideally located for the local amenities of Imperial Wharf while there is a wide range of shops, bars and boutiques available on King's Road.

Features

- Manhattan One Bedroom
- Open Plan Kitchen
- Gym and Pool Access
- 24 Hour Concierge
- Private Parking
- Private Balcony

Park Street, London, SW6



Total area (approx.) : 45.2 sq. m (486 sq. ft)
Total balcony area (approx.) : 3.9 sq. m (42 sq. ft)