

RIVER
PARK
TOWER

ONE NINE ELMS • LONDON

FLOOR PLANS

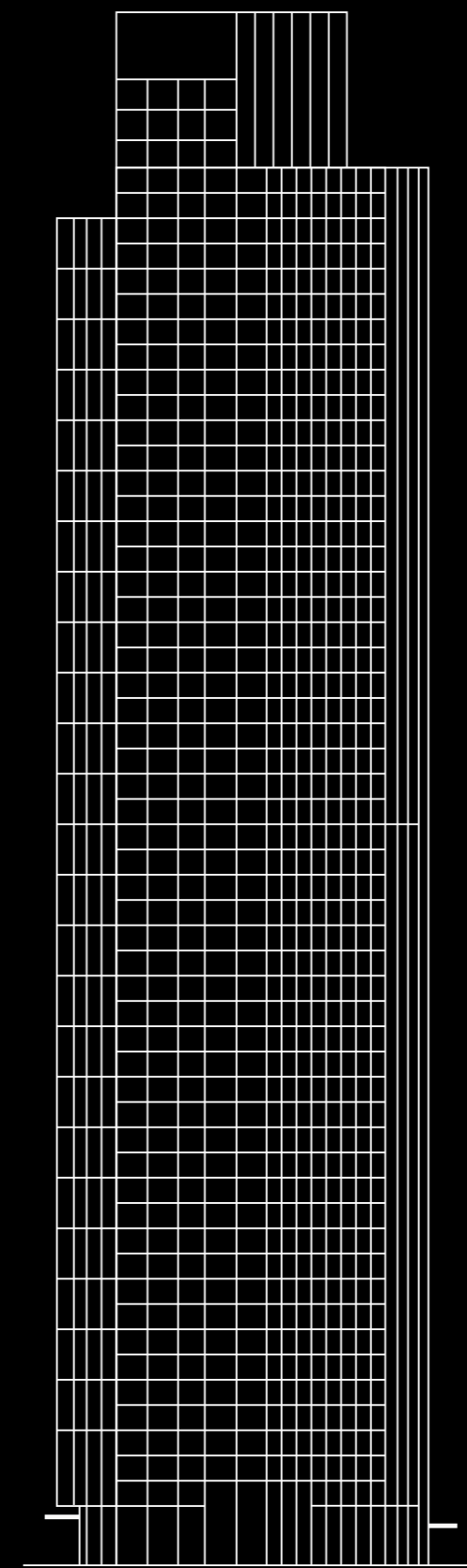
Some were made
to stand tall and
stand out. River
Park Tower is a
once-in-a-lifetime
opportunity to
rise above the city
and find the place
where you belong.

RIVER PARK TOWER



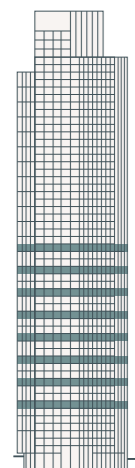
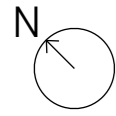
ELLEVANTER 57

The residences offer a bespoke premium experience from the moment you step into the foyer. Beginning on floor 7, the residences rise up to floor 55, with amenities on floors 1, 31 and 50. There is a choice of one to four bed residences and a variety of layouts to suit your differing needs, many with private winter gardens.

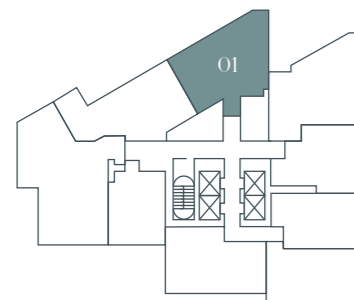


- 56 OBSERVATION DECK
- 51-55 PENTHOUSE & SUB-PENTHOUSES
- 50 SKY TERRACE, RESIDENTIAL LOUNGE & RESIDENCES
- 32-49 RESIDENCES
- 31 RESIDENCES AMENITIES - INCLUDING CINEMA ROOM, MEETING ROOM, MULTI-MEDIA ROOM, CHILDREN'S PLAY ROOM
- 7-30 RESIDENCES
- 1 FITNESS CENTRE & CHANGING ROOM, JUICE BAR
- G ENTRANCE LOBBY GM BUSINESS LOUNGE & MEETING ROOMS
- B PARKING & CYCLE STORE

TWO BEDROOM



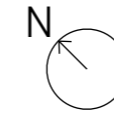
AVAILABLE ON FLOORS
07–28*



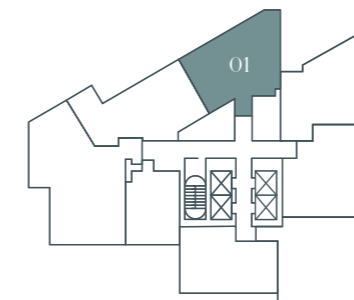
TOTAL AREA	93.2 SQ M	1,003 SQ FT
Living/Dining/Kitchen	6.51m x 4.07m	21'4" x 13'4"
Winter Garden	2.72m x 2.6m	8'11" x 8'6"
Bedroom 1	7.32m x 2.98m	24'0" x 9'9"
Bedroom 2	5.25m x 2.84m	17'3" x 9'4"

*Short entrance hall applies to Level 07, 10, 13, 16, 19, 22, 25, 28

TWO BEDROOM



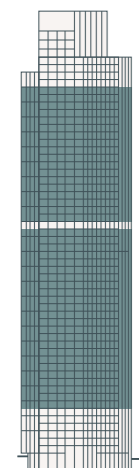
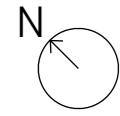
AVAILABLE ON FLOORS
08–30 & 32–47*



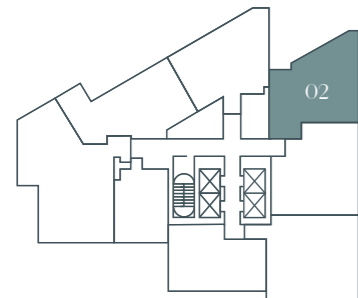
TOTAL AREA	98.3 SQ M	1,058 SQ FT
Living/Dining/Kitchen	6.51m x 4.07m	21'4" x 13'4"
Winter Garden	2.72m x 2.6m	8'11" x 8'6"
Bedroom 1	7.32m x 2.98m	24'0" x 9'9"
Bedroom 2	5.25m x 2.84m	17'3" x 9'4"

*Long entrance hall applies to Level 08, 09, 11, 12, 14, 15, 17, 18, 20, 21, 23, 24, 26, 27, 29, 30 & 32-47

TWO BEDROOM

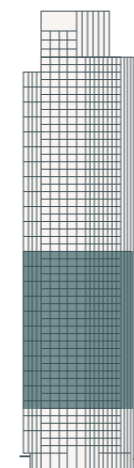
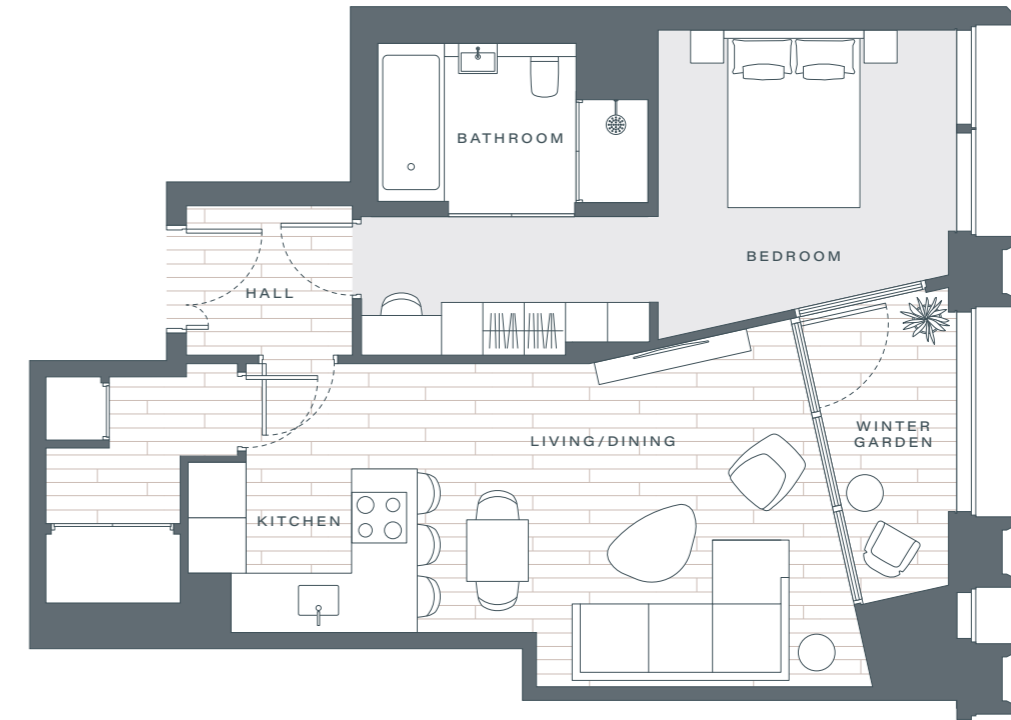
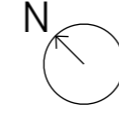


AVAILABLE ON FLOORS
07-30 & 32-49

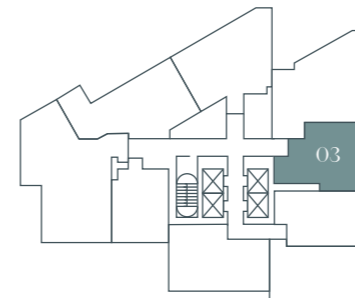


TOTAL AREA	96 SQ M	1,033 SQ FT
Living/Dining/Kitchen	6.35m x 5.34m	20'10" x 17'6"
Winter Garden	5.72m x 1.79m	18'9" x 5'10"
Bedroom 1	4.82m x 4.62m	15'10" x 15'2"
Bedroom 2	3.69m x 3.01m	12'1" x 9'11"

ONE BEDROOM

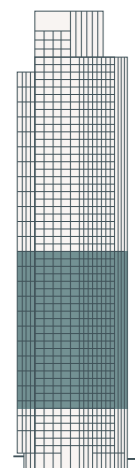
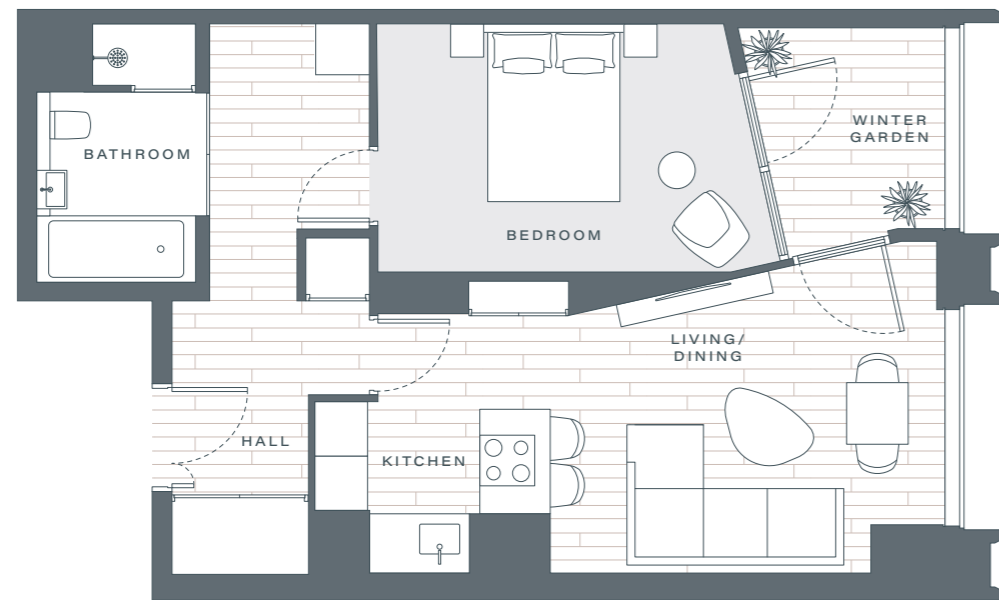
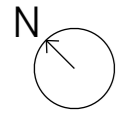


AVAILABLE ON FLOORS
07-27

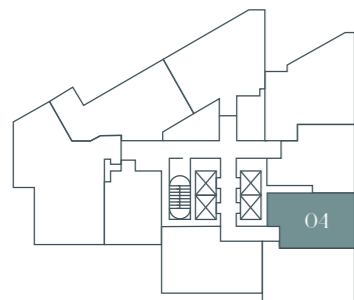


TOTAL AREA	65.1 SQ M	701 SQ FT
Living/Dining/Kitchen	6.67m x 3.72m	21'11" x 12'2"
Winter Garden	3.45m x 1.46m	11'4" x 4'9"
Bedroom	6.77m x 3.53m	22'3" x 11'7"

ONE BEDROOM

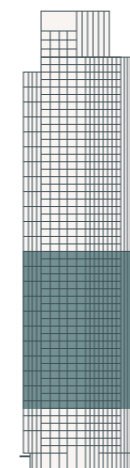
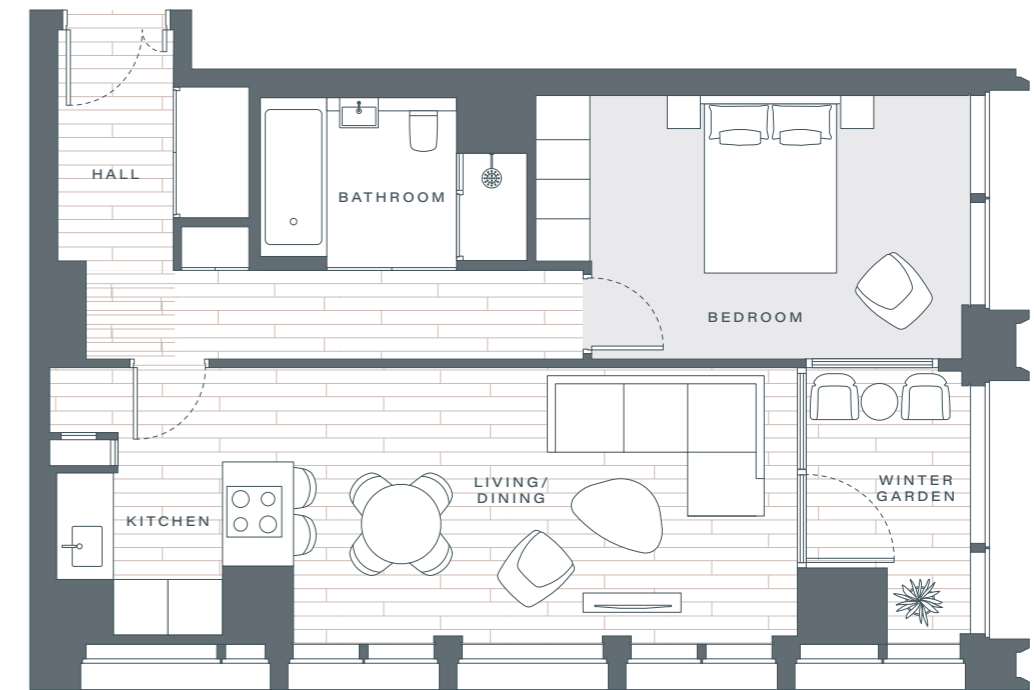
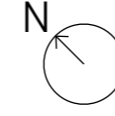


AVAILABLE ON FLOORS
07-27

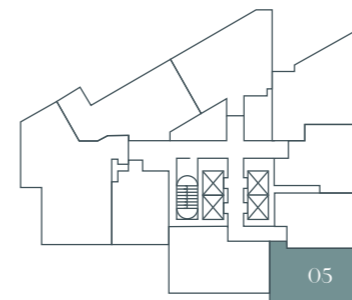


TOTAL AREA	61.7 SQ M	664 SQ FT
Living/Dining/Kitchen	6.5m x 3.31m	21'4" x 10'10"
Winter Garden	2.43m x 2.09m	7'12" x 6'10"
Bedroom	4.26m x 2.83m	13'12" x 9'3"

ONE BEDROOM

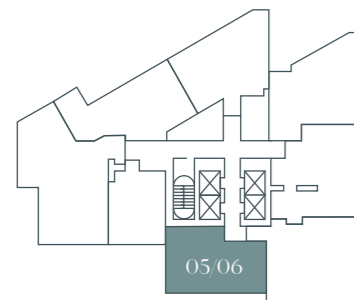
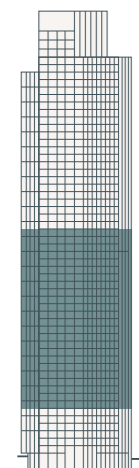
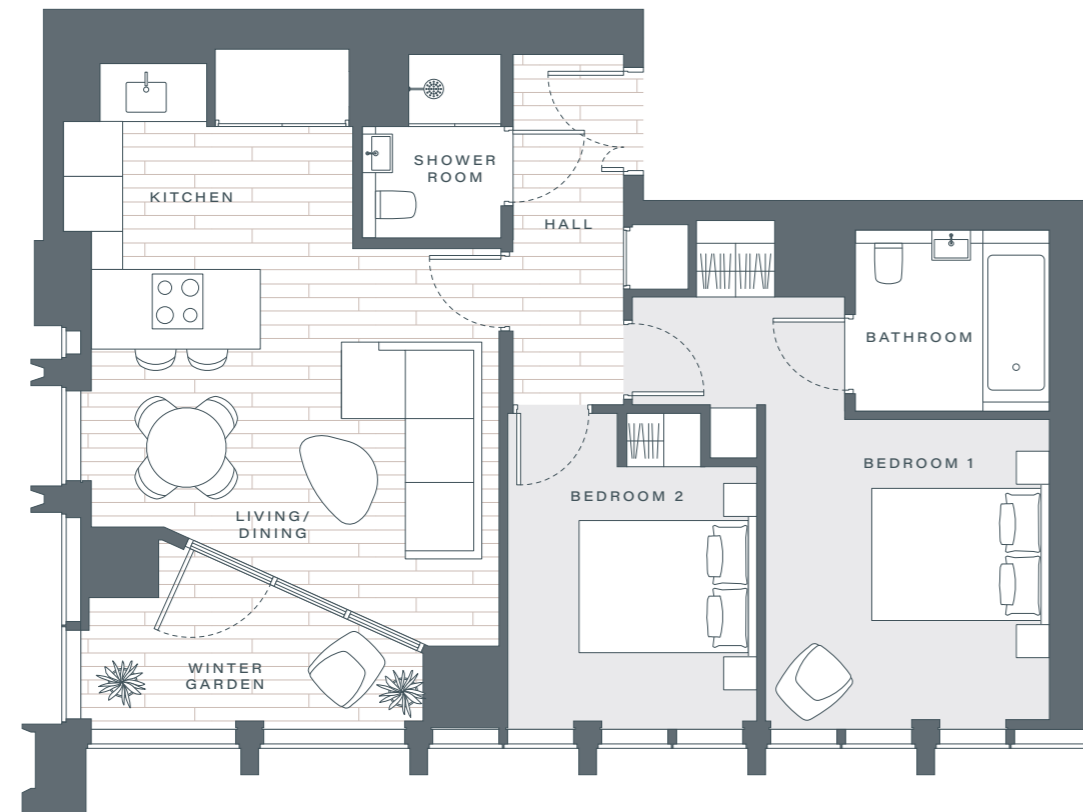
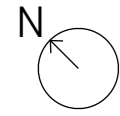


AVAILABLE ON FLOORS
07-27



TOTAL AREA	67.3 SQ M	724 SQ FT
Living/Dining/Kitchen	8.4m x 3.15m	27'7" x 10'4"
Winter Garden	3.1m x 1.88m	10'2" x 6'2"
Bedroom	4.89m x 2.99m	16'1" x 9'10"

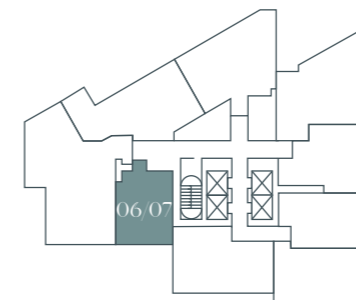
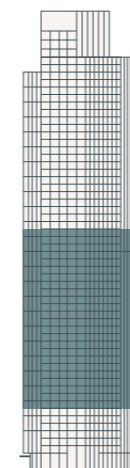
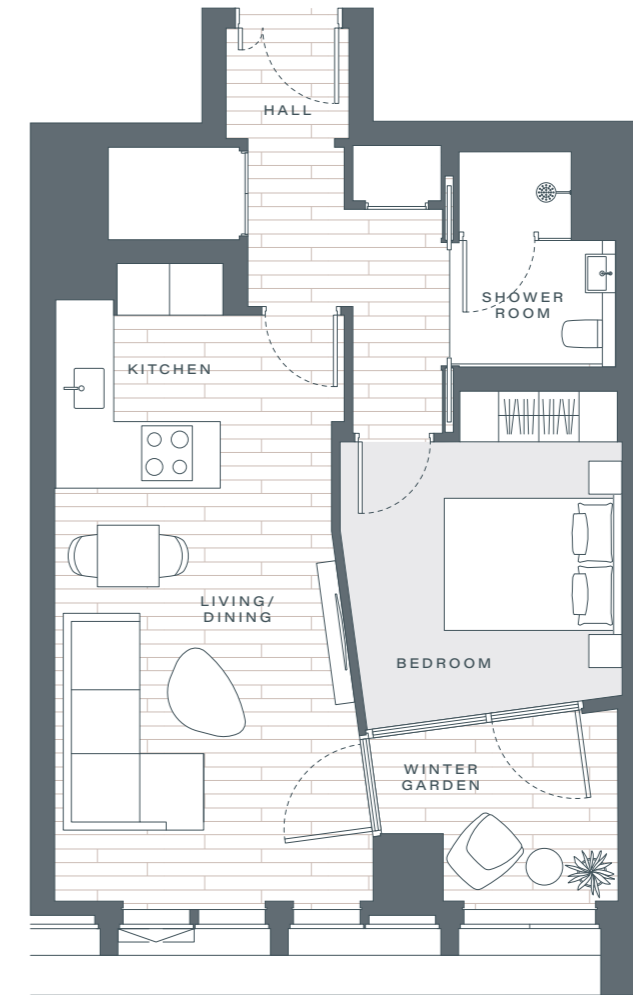
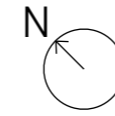
TWO BEDROOM



06 ON FLOORS 07–27
05 ON FLOORS 28–30

TOTAL AREA	77.0 SQ M	829 SQ FT
Living/Dining/Kitchen	5.3m x 4.65m	17'5" x 15'3"
Winter Garden	3.9m x 1.5m	12'10" x 4'11"
Bedroom 1	5.78m x 3.31m	18'12" x 10'10"
Bedroom 2	3.59m x 2.83m	11'9" x 9'3"

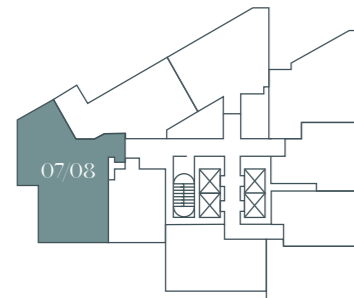
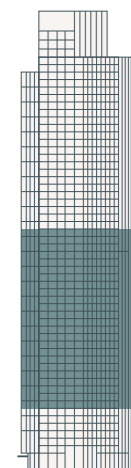
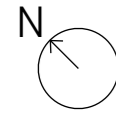
ONE BEDROOM



07 ON FLOORS 07–27
06 ON FLOORS 28–30

TOTAL AREA	57.8 SQ M	622 SQ FT
Living/Dining/Kitchen	6.72m x 3.28m	22'1" x 10'9"
Winter Garden	2.73m x 2.14m	8'11" x 7'0"
Bedroom	3.66m x 3.18m	12'0" x 10'5"

THREE BEDROOM

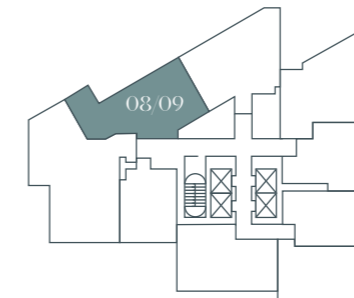
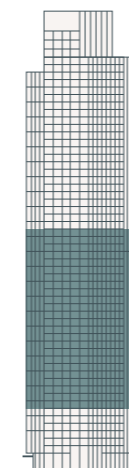
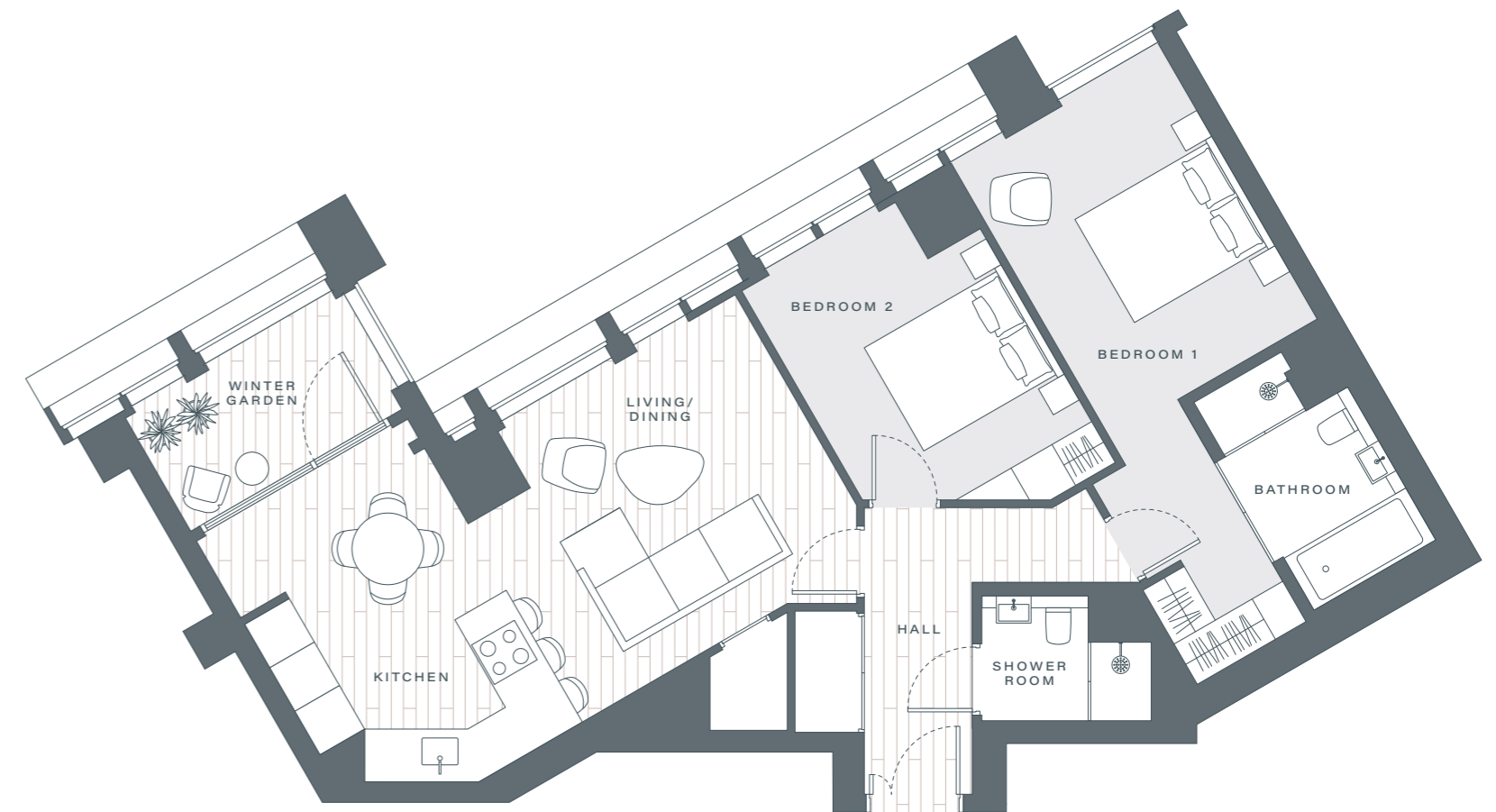
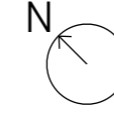


08 ON FLOORS 07-27
07 ON FLOORS 28-30

TOTAL AREA	141.0 SQ M	1,518 SQ FT
Living/Dining/Kitchen	7.51m x 5.3m	24'8" x 17'5"
Winter Garden	4.33m x 1.75m	14'2" x 5'9"
Bedroom 1	6.58m x 5.18m	21'7" x 16'12"
Bedroom 2	7.88m x 2.91m	25'10" x 9'7"
Bedroom 3	3.58m x 3.26m	11'9" x 10'8"

*On floors 28-30, the plot number will be 7

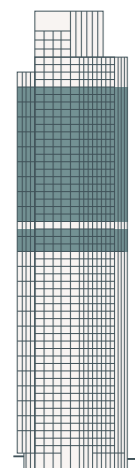
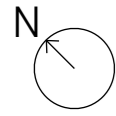
TWO BEDROOM



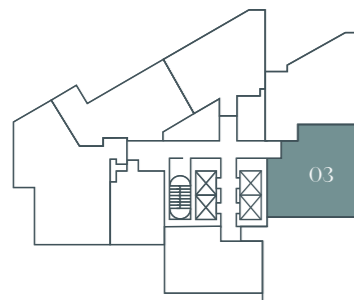
09 ON FLOORS 07-27
08 ON FLOORS 28-30

TOTAL AREA	89.2 SQ M	960 SQ FT
Living/Dining/Kitchen	7.48m x 3.8m	24'6" x 12'6"
Winter Garden	3.17m x 1.8m	10'5" x 5'11"
Bedroom 1	7.25m x 3.06m	23'9" x 10'0"
Bedroom 2	3.72m x 2.99m	12'2" x 9'10"

TWO BEDROOM

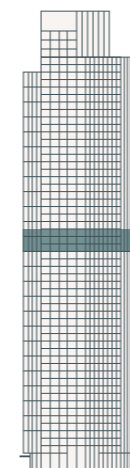
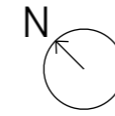


AVAILABLE ON FLOORS
28-30 & 32-49

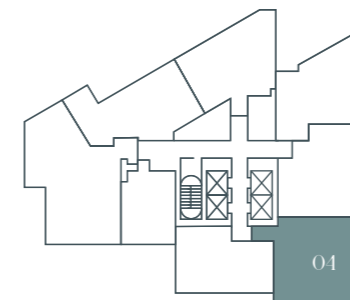


TOTAL AREA	102.4 SQ M	1,102 SQ FT
Living/Dining/Kitchen	6.37m x 4.63m	20'11" x 15'2"
Winter Garden One	2.95m x 2.17m	9'8" x 7'1"
Winter Garden Two	2.76m x 2.17m	9'1" x 7'1"
Bedroom 1	8.04m x 2.82m	26'5" x 9'3"
Bedroom 2	4.33m x 2.85m	14'2" x 9'4"

TWO BEDROOM

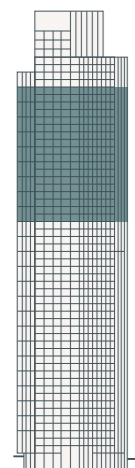
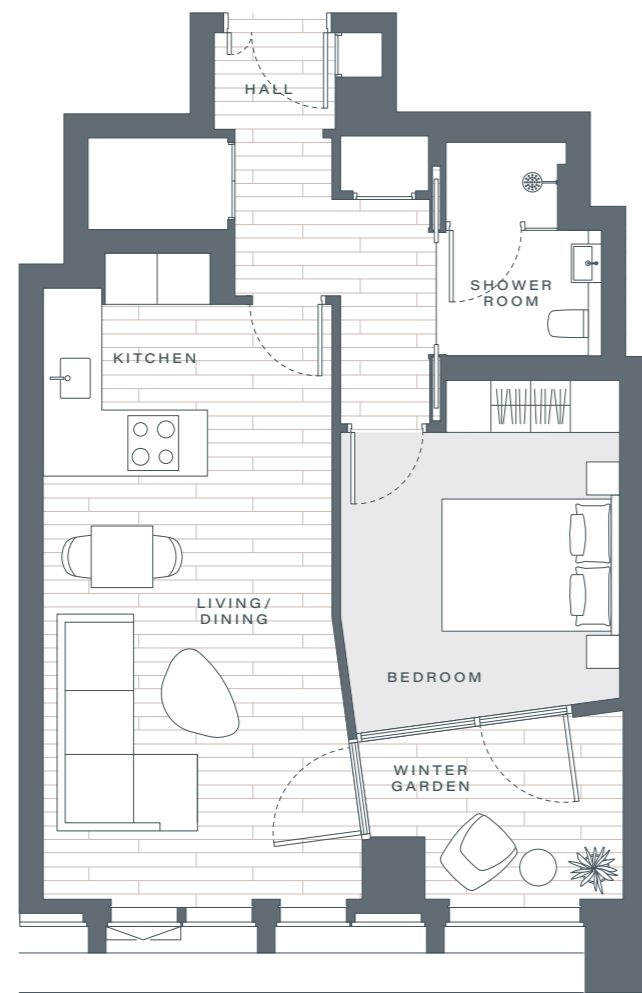
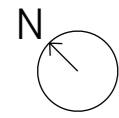


AVAILABLE ON FLOORS
28-30

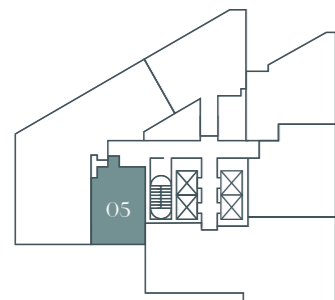


TOTAL AREA	104.7 SQ M	1,127 SQ FT
Living/Dining/Kitchen	6.25m x 5.61m	20'6" x 18'5"
Winter Garden	6.19m x 1.72m	20'4" x 5'8"
Bedroom 1	6.5m x 3.38m	21'4" x 11'1"
Bedroom 2	4.41m x 2.85m	14'6" x 9'4"

ONE BEDROOM

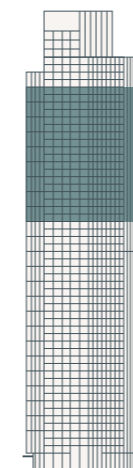
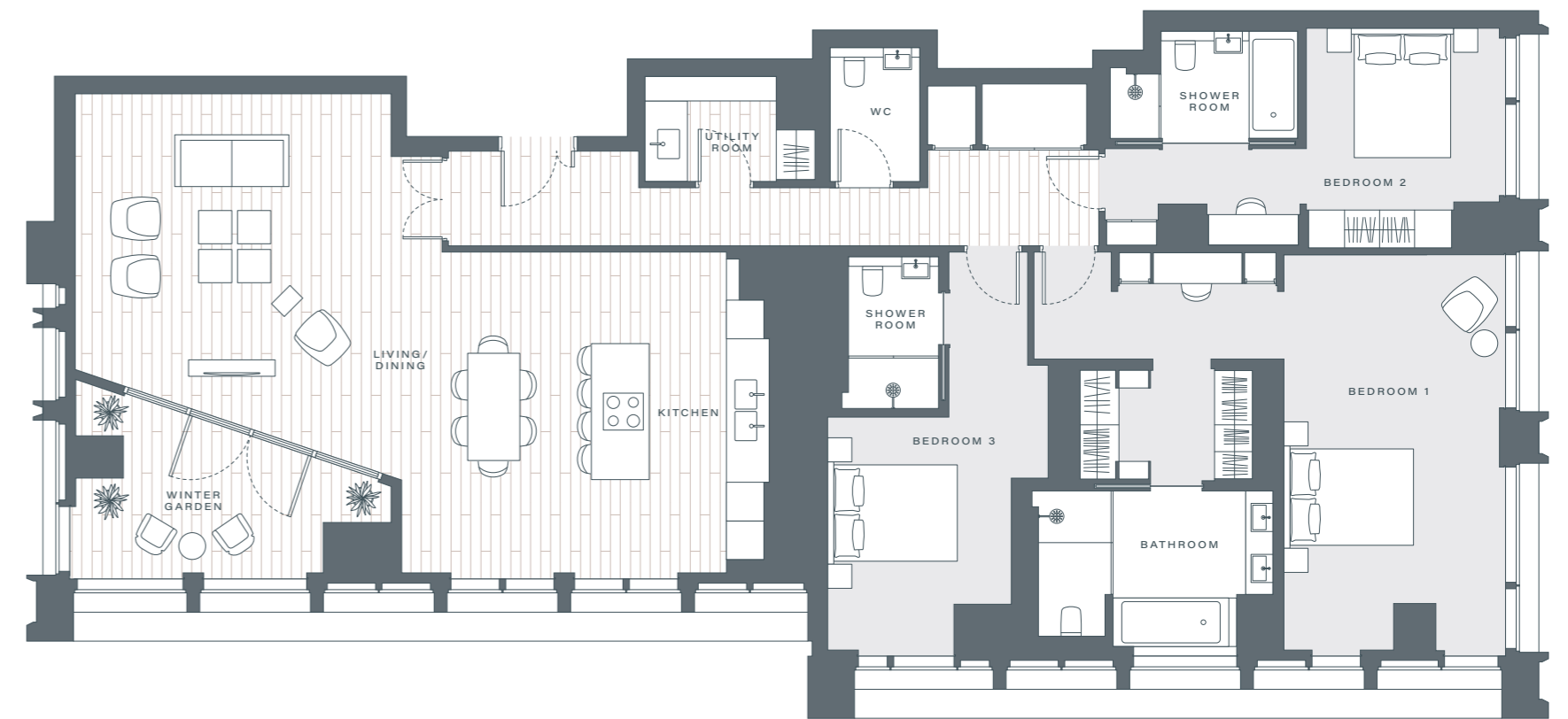
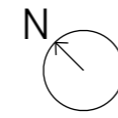


AVAILABLE ON FLOORS
32-49

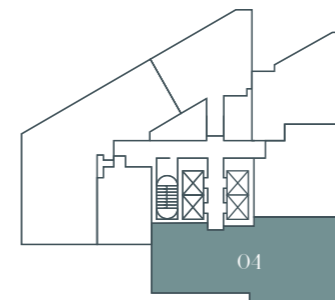


TOTAL AREA	59.7 SQ M	643 SQ FT
Living/Dining/Kitchen	7.13m x 3.28m	23'5" x 10'9"
Winter Garden	2.95m x 2.1m	9'8" x 6'11"
Bedroom	3.74m x 3.18m	12'3" x 10'5"

THREE BEDROOM

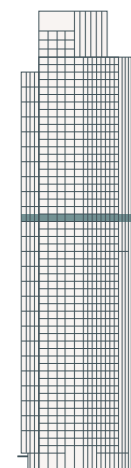
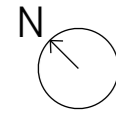


AVAILABLE ON FLOORS
32-49

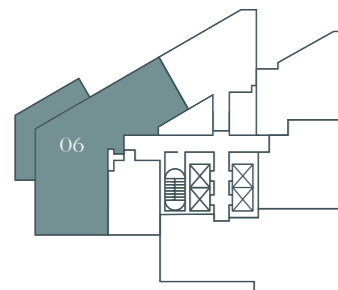


TOTAL AREA	138.9 SQ M	2,033 SQ FT
Living/Dining/Kitchen	10.78m x 6.69m	35'4" x 21'11"
Winter Garden	4.99m x 2.21m	16'4" x 7'3"
Bedroom 1	7.32m x 6.25m	24'0" x 20'6"
Bedroom 2	6.24m x 3.38m	20'6" x 11'1"
Bedroom 3	6.28m x 3.1m	20'7" x 10'2"

THREE BEDROOM

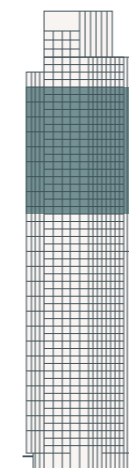
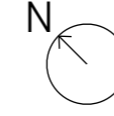


AVAILABLE ON FLOOR 32

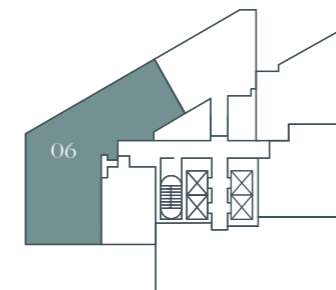


TOTAL AREA	197.8 SQ M	2,129 SQ FT
Living/Dining/Kitchen	11.09m x 4.53m	36'5" x 14'10"
Winter Garden	3.99m x 3.79m	13'1" x 12'5"
Bedroom 1	8.2m x 5.94m	26'11" x 19'6"
Bedroom 2	6.78m x 3.69m	22'3" x 12'1"
Bedroom 3	7.25m x 3.06m	23'9" x 10'0"
Terrace	31.7 sq m	341 sq ft

THREE BEDROOM

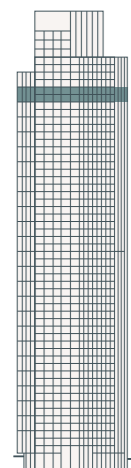
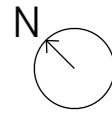


AVAILABLE ON FLOORS
33-49

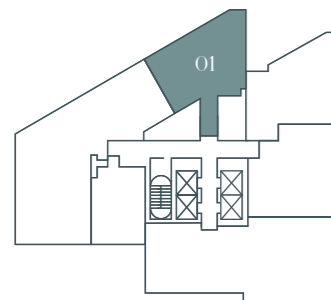


TOTAL AREA	197.8 SQ M	2,129 SQ FT
Living/Dining/Kitchen	11.09m x 4.53m	36'5" x 14'10"
Winter Garden	3.99m x 3.79m	13'1" x 12'5"
Bedroom 1	8.2m x 5.94m	26'11" x 19'6"
Bedroom 2	6.78m x 3.69m	22'3" x 12'1"
Bedroom 3	7.25m x 3.06m	23'9" x 10'0"

TWO BEDROOM

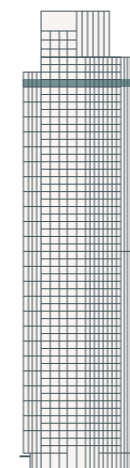
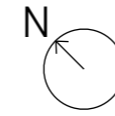


AVAILABLE ON FLOORS
48-49

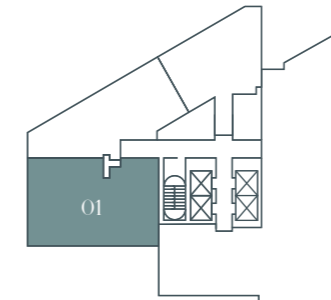


TOTAL AREA	98 SQ M	1,055 SQ FT
Living/Dining/Kitchen	6.45m x 4.11m	21'2" x 13'6"
Winter Garden	2.72m x 2.6m	8'11" x 8'6"
Bedroom 1	7.32m x 2.98m	24'0" x 9'9"
Bedroom 2	5.25m x 2.8m	17'3" x 9'2"

THREE BEDROOM

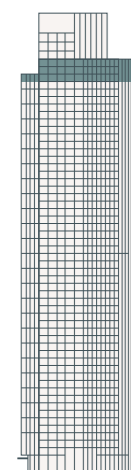
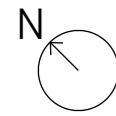


AVAILABLE ON FLOORS 50

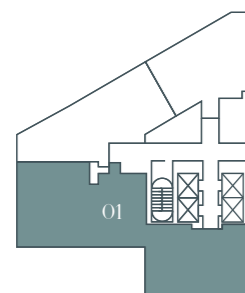


TOTAL AREA	146.2 SQ M	1,574 SQ FT
Living/Dining/Kitchen	6.62m x 6.46m	21'9" x 21'2"
Winter Garden	6.5m x 2.07m	21'4" x 6'9"
Bedroom 1	8.86m x 2.97m	29'1" x 9'9"
Bedroom 2	6.46m x 3.22m	21'2" x 10'7"
Bedroom 3	3.64m x 3.18m	11'11" x 10'5"

FOUR BEDROOM

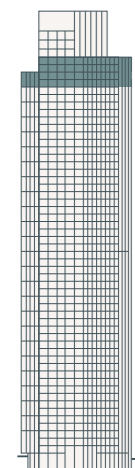
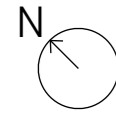


AVAILABLE ON FLOORS
51-53

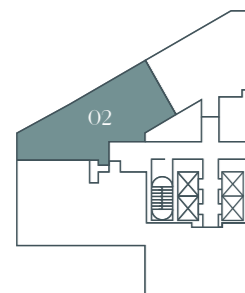


TOTAL AREA	237.8 SQ.M	2,560 SQ.FT
Living/Dining/Kitchen	10.53m x 6.5m	34'7" x 21'4"
Winter Garden	6.36m x 2.1m	20'10" x 6'11"
Bedroom 1	8.05m x 4.49m	26'5" x 14'9"
Bedroom 2	5.82m x 3.67m	19'1" x 12'0"
Bedroom 3	5.82m x 3.02m	19'1" x 9'11"
Bedroom 4	6.01m x 3.07m	19'9" x 10'1"

TWO BEDROOM

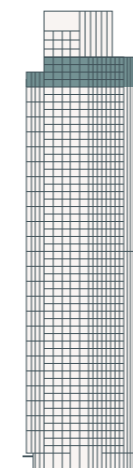
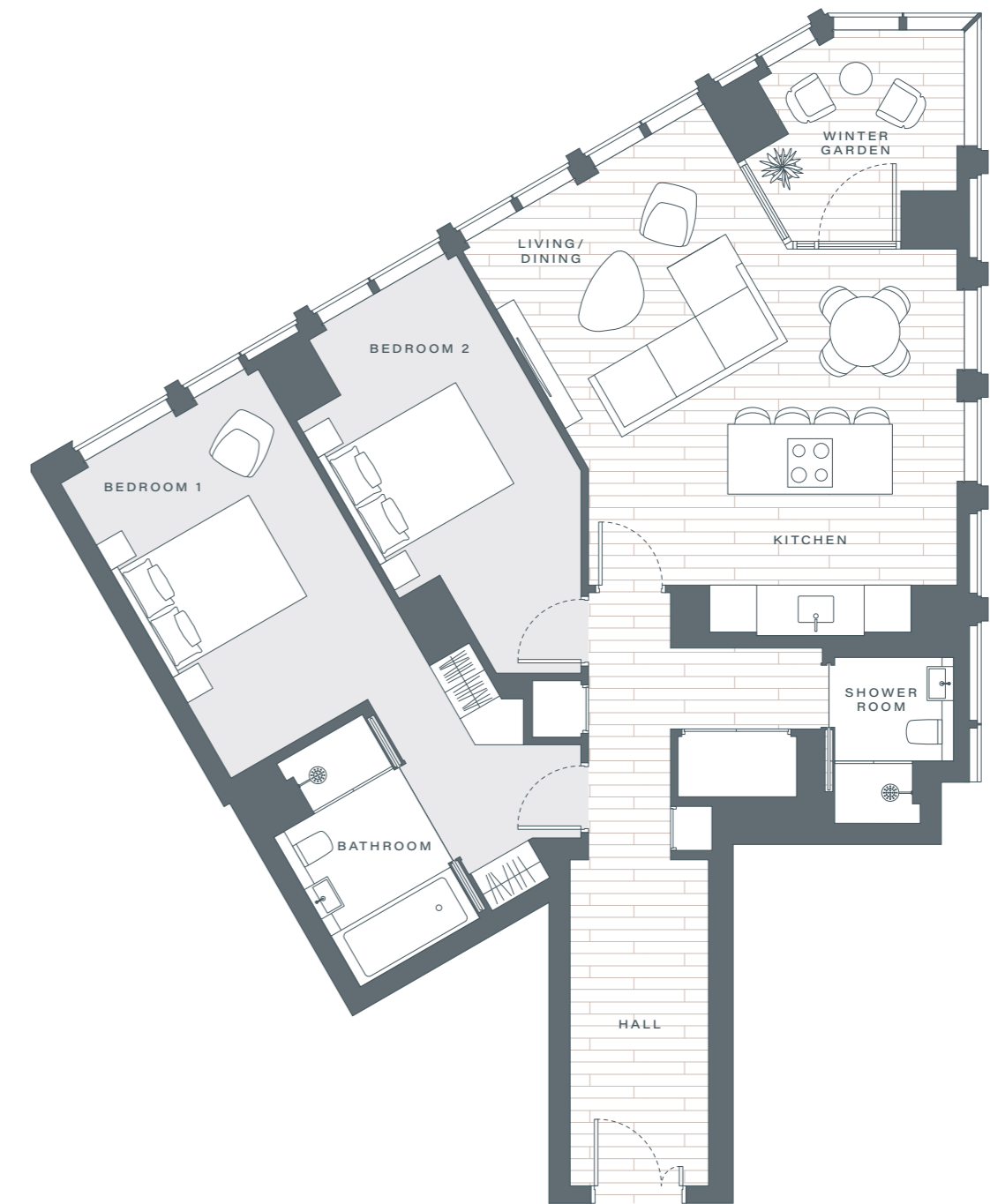
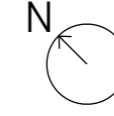


AVAILABLE ON FLOORS
50-53

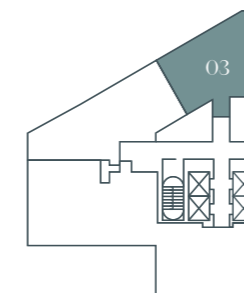


TOTAL AREA	116.0 SQ M	1,249 SQ FT
Living/Dining/Kitchen	5.9m x 5.26m	19'4" x 17'3"
Winter Garden	3.73m x 2.29m	12'3" x 7'6"
Bedroom 1	7.64m x 3.68m	25'1" x 12'1"
Bedroom 2	4.48m x 3.53m	14'8" x 11'7"

TWO BEDROOM



AVAILABLE ON FLOORS
50-53



TOTAL AREA	101.2 SQ M	1,089 SQ FT
Living/Dining/Kitchen	5.55m x 4.84m	18'3" x 15'11"
Winter Garden	2.74m x 2.64m	8'12" x 8'8"
Bedroom 1	7.66m x 2.93m	25'2" x 9'7"
Bedroom 2	4.75m x 2.85m	15'7" x 9'4"



Sumptuous COMFORT

KITCHEN

- Bespoke fully-fitted kitchens including wall and base cabinets
- White Arabesque Silestone Man made stone worktops
- Brushed Stainless Steel splash back
- Bespoke brass trims/handles
- Under-cabinet lighting on wall-mounted cabinets
- Pop-up socket where applicable
- Fully integrated appliances including:
 - Miele oven
 - Miele microwave
 - Miele induction hob
 - Siemens fridge and dishwasher
 - CDA extract hood
 - CDA wine cooler (2-bed, 3-bed & 4-bed units only)

UTILITY CUPBOARD

- Mechanical ventilation with heat recovery (MVHR) serving all habitable rooms.
- Instantaneous HIU (Heat Interface Unit) providing domestic hot water and heating
- Underfloor heating manifold

BATHROOM AND EN-SUITE

- Carrara Marble to wet-area walls
- Lea Ceramiche ceramic floor tiles
- Marble-topped vanity units
- Bespoke wall-mounted mirror cabinet with anti-fog mirror and integrated lighting
- Heated towel rail
- Duravit wall-mounted toilet with Valsir concealed cistern
- Duravit undermounted basin
- Hansgrohe basin tap
- Hansgrohe ceiling mounted shower heads and wall-fixed shower head
- Bette built-in bathtub

WARDROBES

- Bespoke oak veneer finish with brass handles

JOINERY AND FLOORING

- Engineered timber flooring in living and dining areas
- Carpet in bedroom
- Glutz Ironmongery

HEATING, COOLING AND HOT WATER

- Comfort cooling to all habitable rooms
- Zoned underfloor heating throughout provided with heat from the Heat Interface Units (HIUs)
- Separate temperature control to lounge, kitchen and bedrooms

SECURITY AND PEACE OF MIND

- Sprinkler protection provided throughout the apartment
- Fire alarms and smoke/heat detector
- Secure solid wood external doors with multi-point locking
- 24-hour concierge
- 10-year buildmark warranty
- IP Video-Audio Intercom System

FAÇADE SYSTEM

- Triple-glazed, low-iron, high-performance windows with Anthracite Grey PPC framing
- Full-height sliding door in the living room featuring laminated glass and anodized champagne bronze Juliet balcony
- External PPC Mega Decoration fin installed with Germany Jura Limestone showcasing natural fossil feature
- Winter garden walls incorporating a swing door

ELECTRICAL

- FTTP Fibre to BT Open Reach and Hyperoptic
- Lutron LED lighting control system for dimming and daylight management.
- Energy Display System (EDS) provided to meet the requirement for Code for Sustainable Homes
- 'Home Office' wired compliant for Code for Sustainable
- Bronze Satin small socket and switch face plates
- Satellite TV system
- Energy Display System (EDS) provided to meet the requirement for Code for Sustainable homes

AMENITIES

- Resident-only amenities include:
- Resident's Business Lounge & meeting rooms on GF Mezz
- Resident's Gym on Level 1
- Children Play Area on Level 31
- Multimedia Room on Level 31
- Meeting Room on Level 31
- Cinema Room on Level 31
- Residential shared amenities and large amenity terrace on Level 50
- Parking and cycle store in basement

LANDSCAPING

- Linear Park – providing a green walk from Vauxhall Bridge to Battersea Power Station it will be a publicly accessible park with play areas, sculptured seating and hundreds of new trees.
- The residents' terrace on River Tower (Park Hyatt) level 4 includes child's play area, soft hard and landscaping

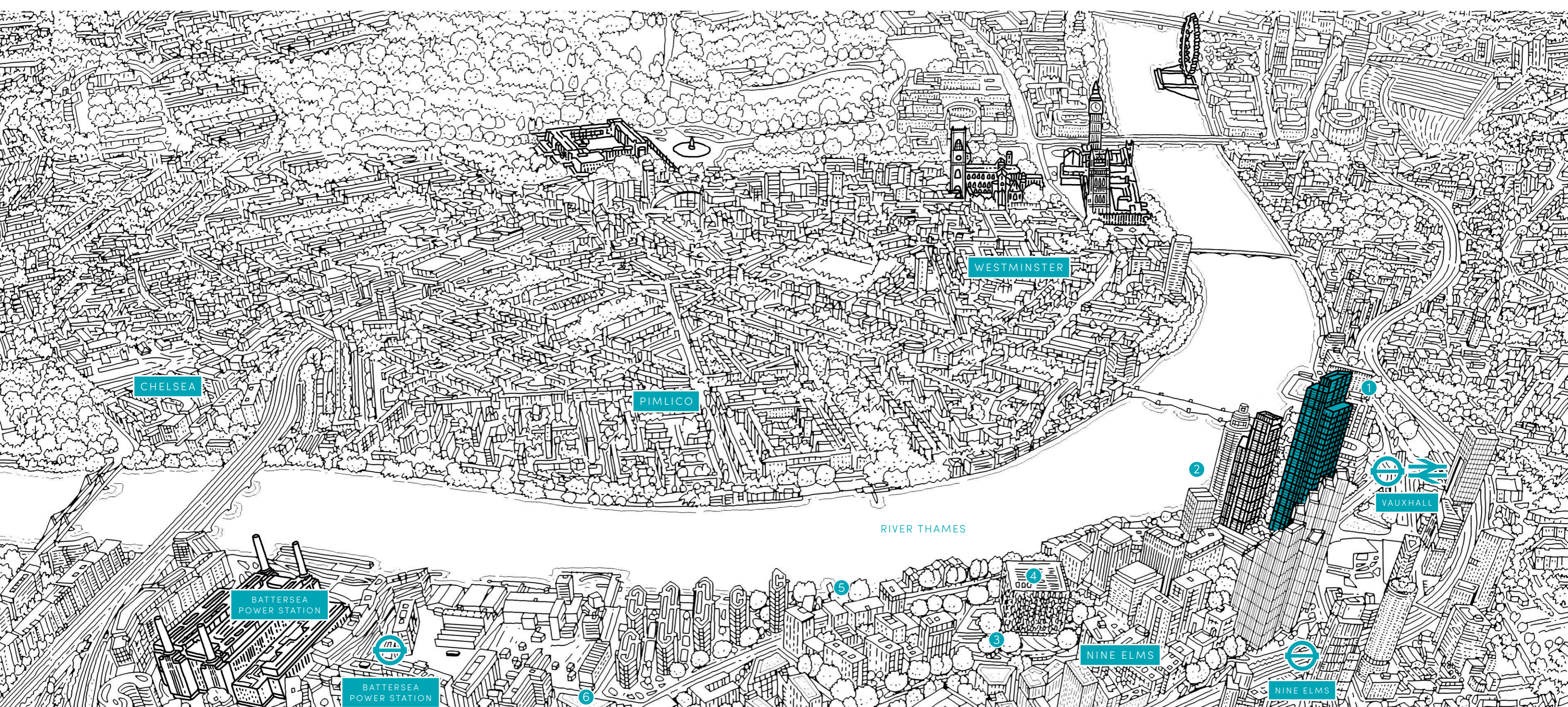


LUXURY Redefined

What looks spectacular on the outside should always feel exceptional on the inside. River Park Tower offers a bespoke premium experience from the moment you step into the foyer.

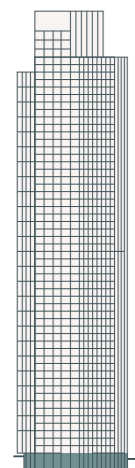


THIS PAGE
Level 50 'Terrace' (Top)
Versatile Event Space



- 1 MI6
- 2 St George Wharf Pier
- 3 Linear Park
- 4 US Embassy
- 5 The River Walkway
- 6 The New Covent Garden Market

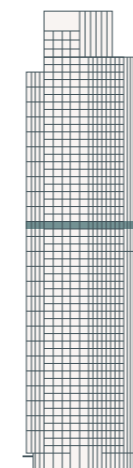
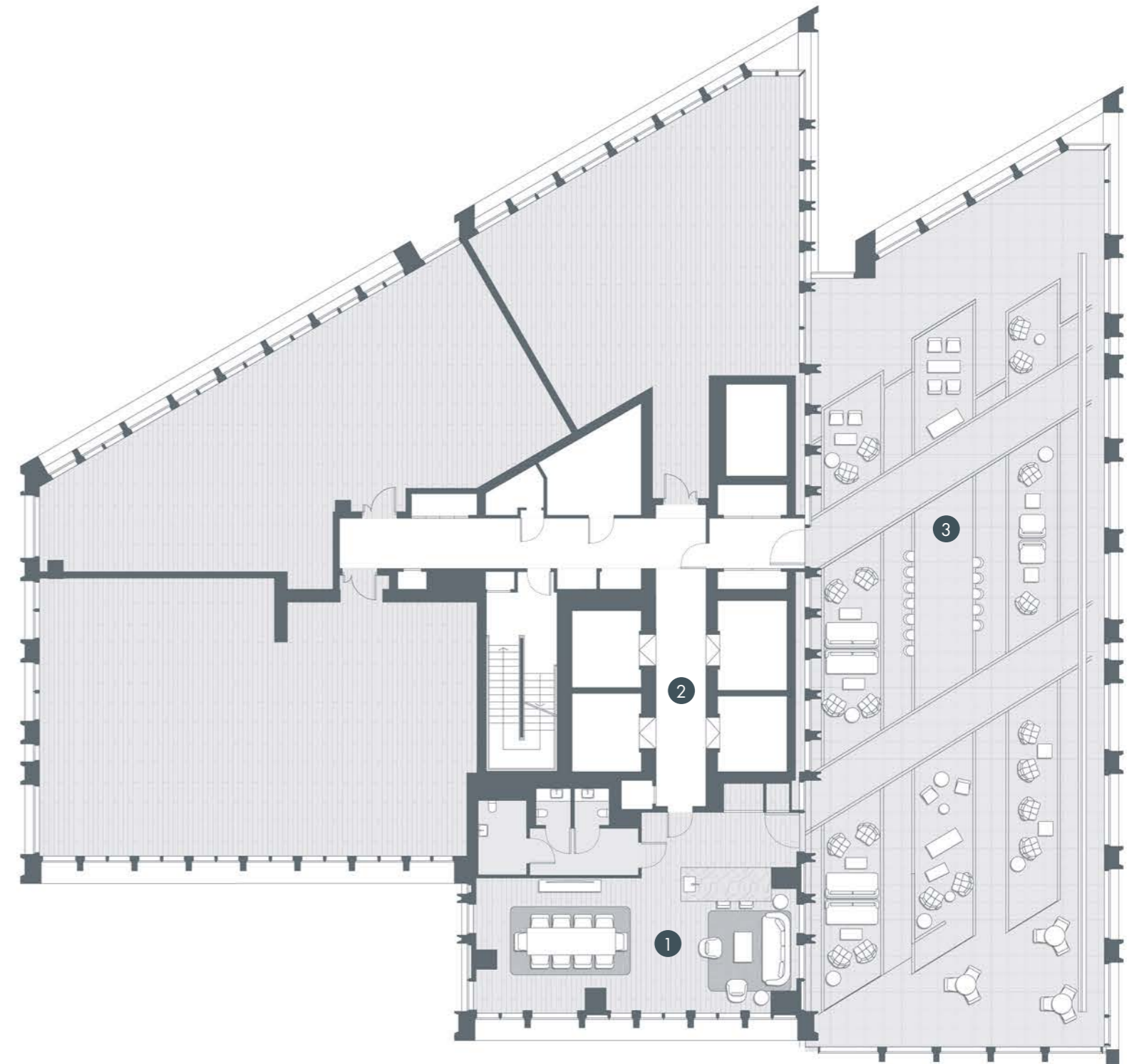
AMENITIES LEVEL 1



KEY

- ① Gym
- ② Lift Lobby
- ③ Gym Lobby
- ④ Observational Deck Waiting Area
- ⑤ Estate Management Office

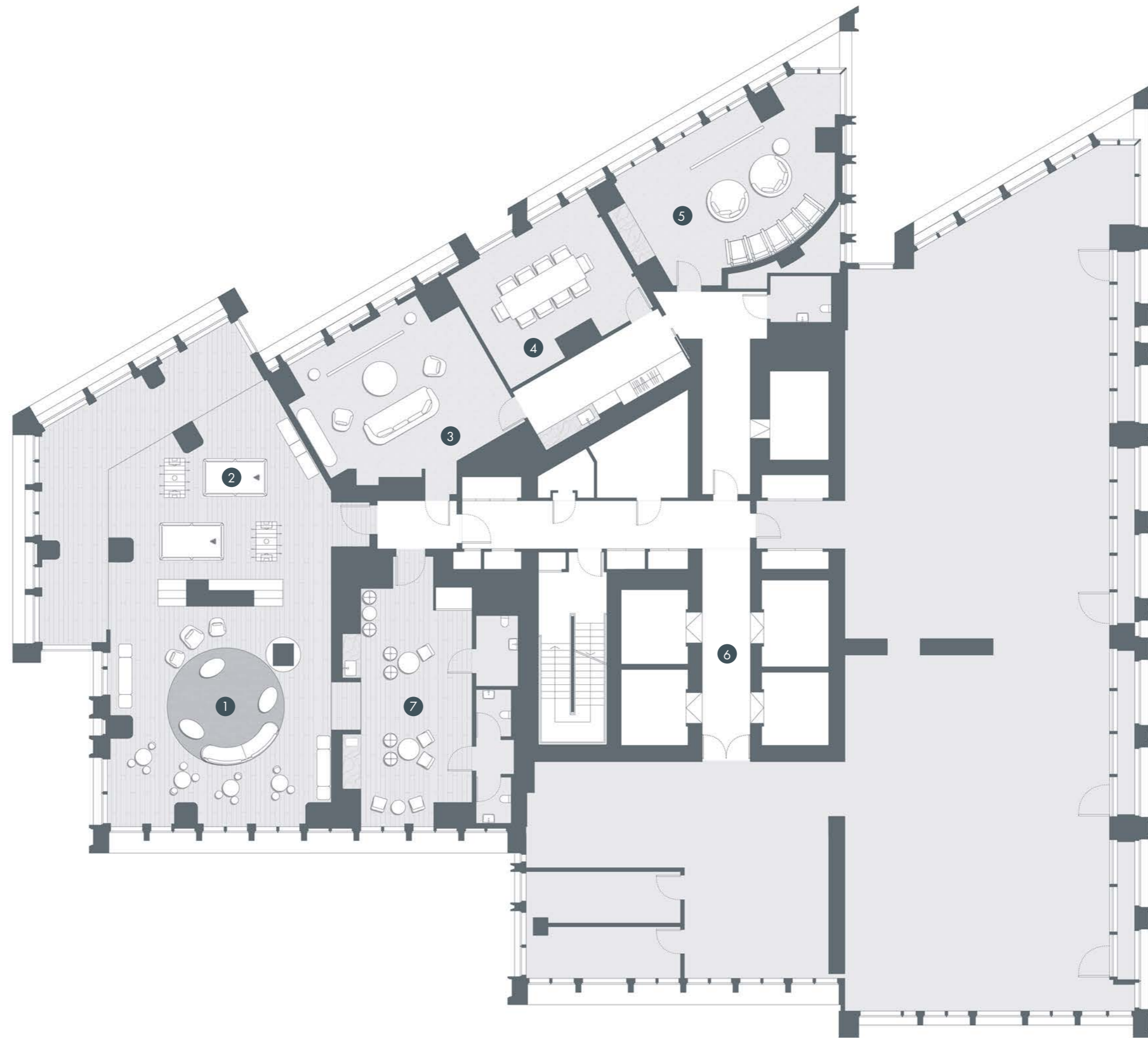
AMENITIES LEVEL 50



KEY

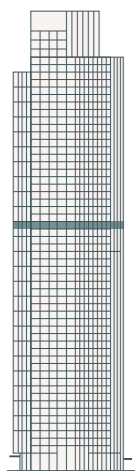
- ① Sky Bar
- ② Lift Lobby
- ③ Sky Terrace & Residential Lounge

AMENITIES LEVEL 31



KEY

- ① Child Play Area
- ② Games Room
- ③ Multimedia Room
- ④ Meeting room
- ⑤ Cinema
- ⑥ Lift Lobby
- ⑦ Kitchen Area

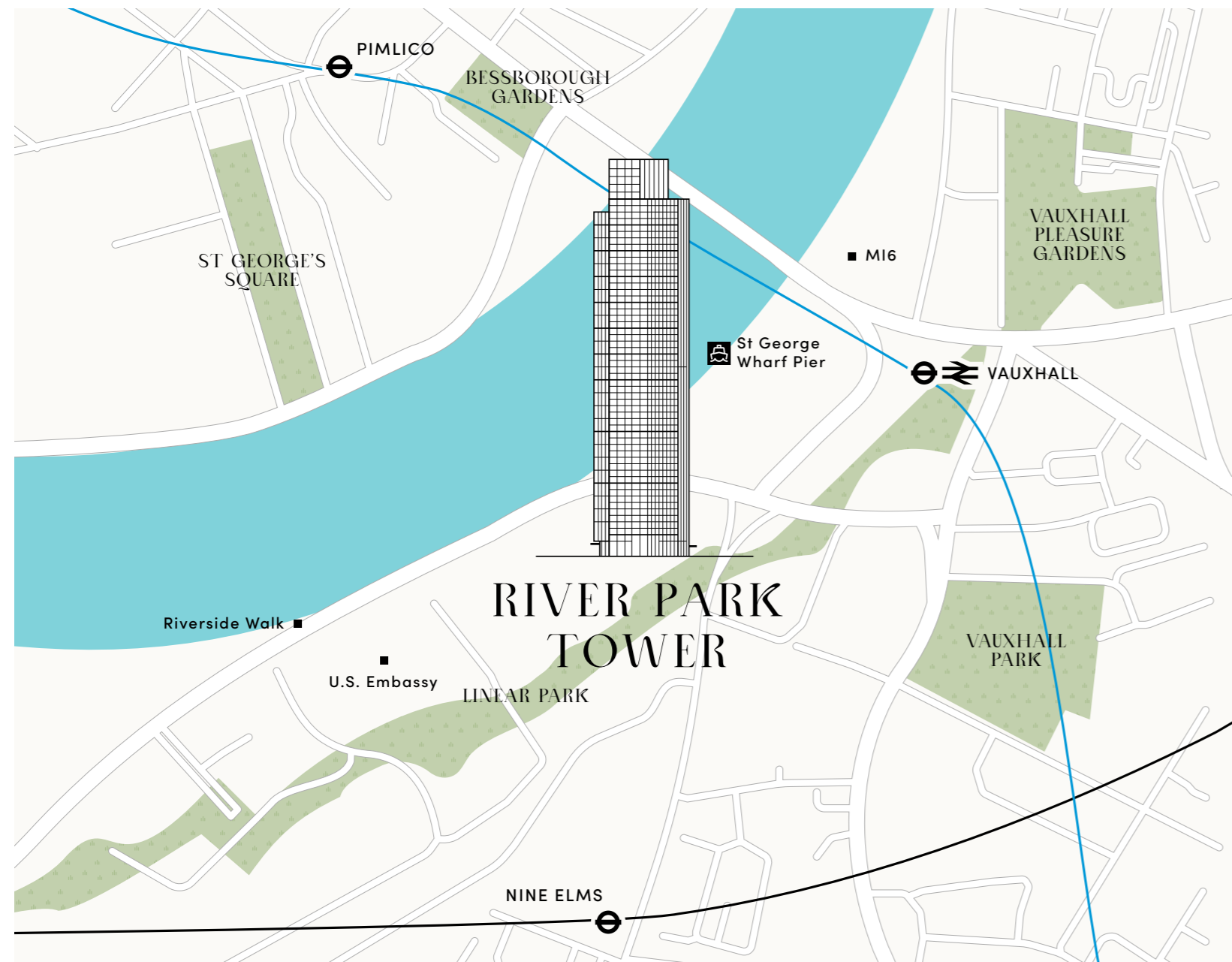


Get in TOUCH

River Park Tower, 1 Nine Elms Lane,
London SW8 5HE, United Kingdom

info@riverparktower.com
+44 (0)20 3826 8616

RIVERPARKTOWER.COM



Disclaimer: Any areas, measurements or distances are approximate. The text, images and plans are for guidance only and are not necessarily comprehensive. Any photography/computer generated images of views are provided as a guide only. As with any London development there may be ongoing planning matters and consents that could result in these views changing over time. Please speak to your solicitor to whom full details of any neighbouring schemes will be available. It should not be assumed that the property has all necessary planning, building regulation or other consents and any services, equipment or facilities have not been tested. Purchasers must satisfy themselves by inspection or otherwise. The internal layouts and the terrace pools are subject to planning. The particulars in this document are indicative and are prepared for the guidance only of prospective owners, tenants and occupants. They are intended to give a fair overall description of the property but do not constitute a warranty or representation or form part of an offer or contract. Any information contained herein (whether in text, plans, photographs or computer-generated images) is given in good faith and should not be relied upon as being a statement or representation of fact. Any areas, measurements or distances referred to herein are approximate only. All furnishings, wallpaper, curtains and pendant lighting are for illustrative purposes only. Descriptions of a property are inevitably subjective and the descriptions contained herein are used in good faith as an opinion and not by way of statement of fact. River Park Tower is a marketing name and will not necessarily form part of the approved postal address. R&F Properties ("Developer") is solely responsible for the marketing and sale of the Residences. The Developer reserves the right to modify, update, alter, delete or change any designs, specifications, dimensions, amenities, brands, fixtures, finishes, equipment, services, and features of this project, without notice and without incurring obligation. Specifications, dimensions, measurements, and other information in this material and other Developer materials are approximate and based upon preliminary designs and drawings and are not intended to form any part of the contract for the sale of an individual residence. Each residence, including square footage, may differ due to variations in construction. All prices for the residences and the prices for the furnishing packages (if any) are subject to change at any time and without notice.

