



Nine Elms Lane, SW8

£1,118,000

A large lateral one double bedroom apartment with study space on the 22nd floor with epic views across the River Thames & towards Battersea Power station. The building boasts a gym, children's play area, meeting rooms, as well as a fully fitted gym

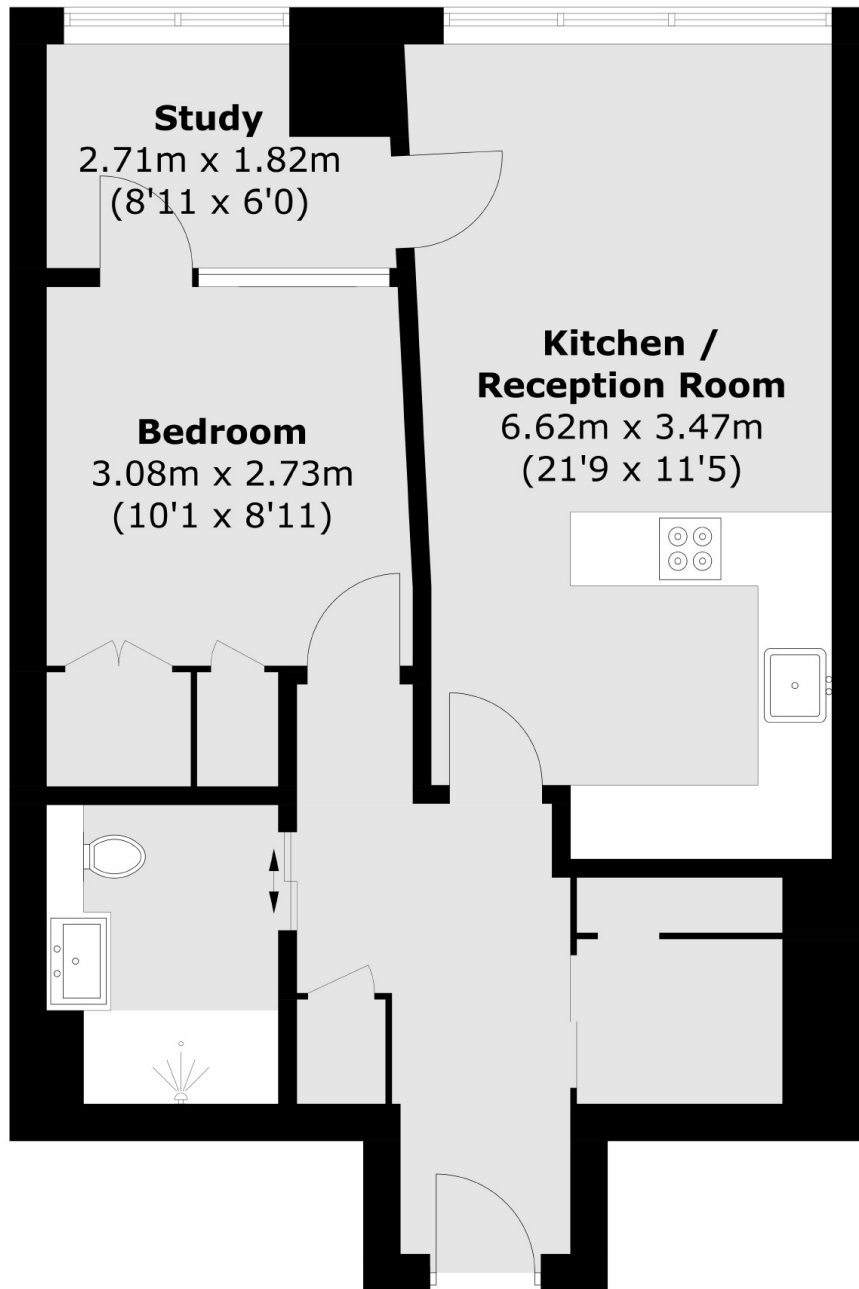
** Please note, some additional photographs from the show home within the same development have been used **

River Park Tower is conveniently located for transport being just a three minute walk to Vauxhall Underground (Victoria Line) and Overground with the many facilities of Battersea Power Station right around the corner. Nine Elms offers a variety of green open spaces which are all easily accessible.

Features

Ready To Move Into - Q3/Q4
One Large Bedroom
24 Hour Concierge
Incredible Location - Nine Elms
Close To Transport - Vauxhall
Underfloor Heating
Cinema Room
Residents Gym

Nine Elms Lane, Vauxhall, SW8



Twenty Eighth Floor

Total area (approx.): 55.9 sq. m (601.7 sq. ft)