



Kennington Lane, SE11

£1,140,000

A two double bedroom, two bathroom apartment located within the tallest building at Oval Village, set over 18 floors, The Pinnacle offers unrivalled views over the Kia Oval to the South, the modern edifices of Vauxhall in the West and London's iconic skyline to the North.

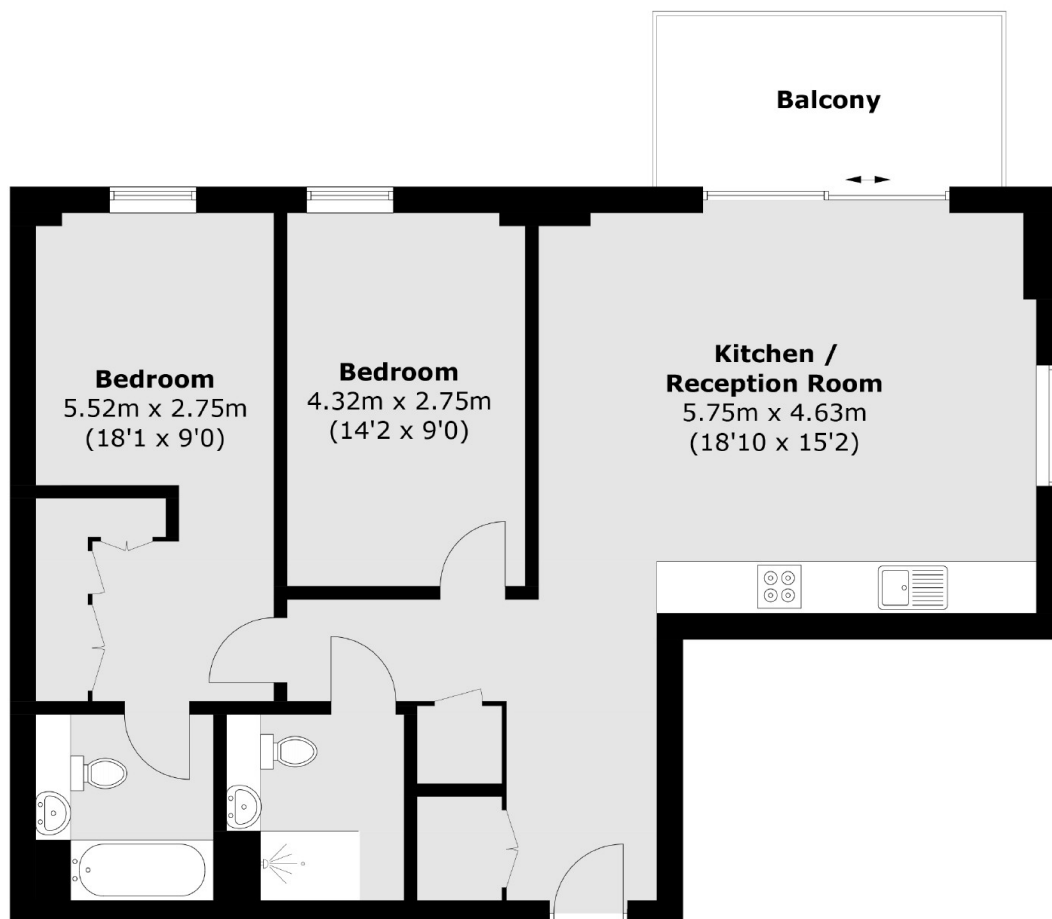
** Please note, some additional photographs from the show home within the same development have been used **

Situated in Oval Village, also within Zone 1, these elegant 1-3 bedroom apartments are conveniently located within a 10-minute walk of three tube stations. Surrounded by lush green spaces and acclaimed parks, residents are also in close proximity to the iconic Kia Oval Cricket Ground, the picturesque River Thames, and a plethora of fashionable shops, bars, and restaurants.

Features

- The Pinnacle
- Two Bedrooms
- Two Bathroom
- 15th Floor Apartment
- Private Balcony
- 999 Year Leasehold

Kennington Lane, Kennington, SE11



Total area (approx.): 77.8 sq. m (837.4 sq. ft)
Balcony: 7.9 sq. m (85.0 sq. ft)