



Meadowview Road, SW20

£565,000

Allocated parking is available - The Harrison is a wonderful 2-bedroom apartment which features two double bedroom with plentiful wardrobe space, an open-plan kitchen, living, and dining area with a charming balcony, an ensuite and a modern bathroom.

The open-plan kitchen, living, and dining room provides ideal space to invite guests over, extended outdoors onto a private terrace. The kitchen is complete with fitted units and integrated appliances, and the room offers plenty of space for relaxing.

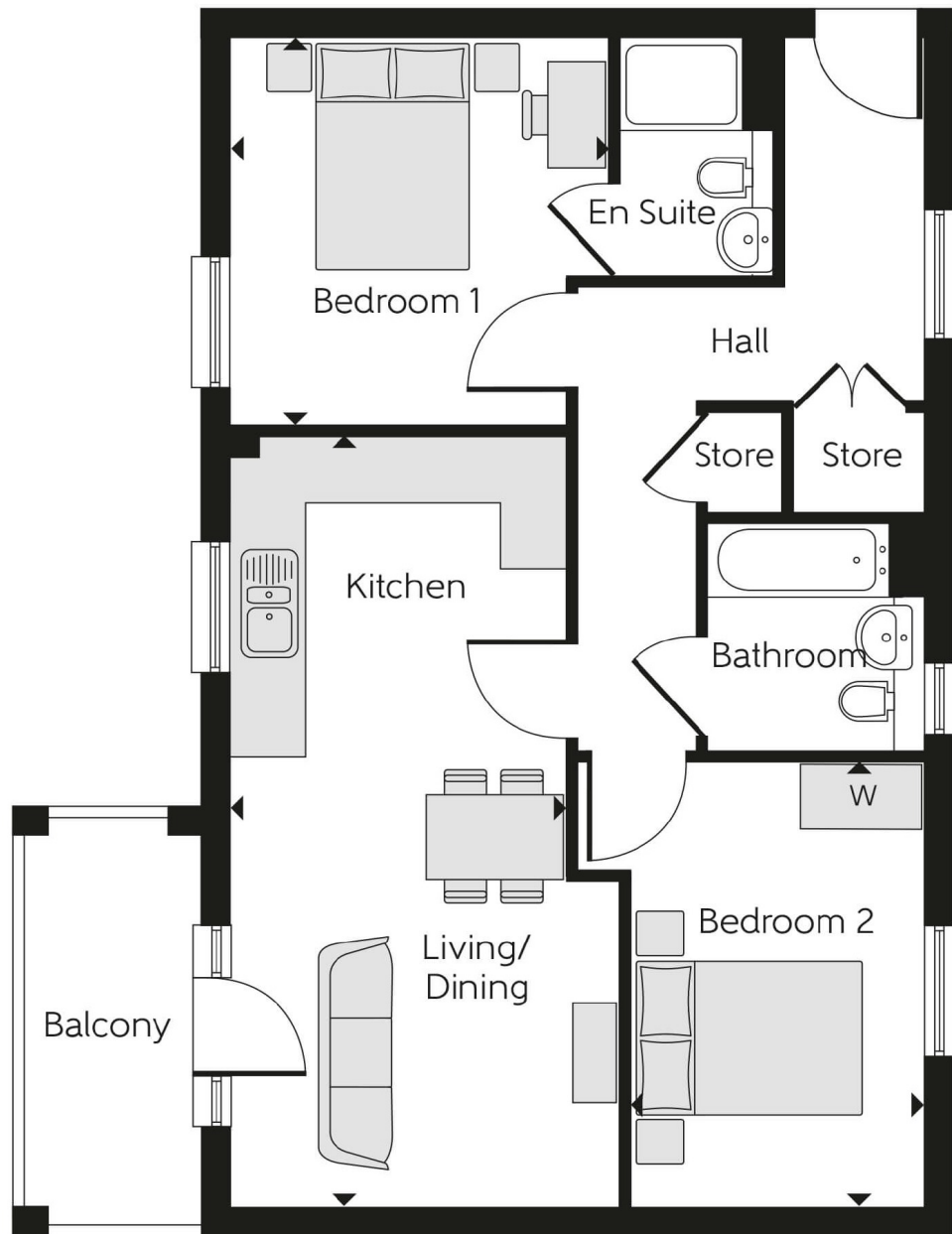
** Please note, some additional photographs from the show home within the same development have been used **

Cavendish Grove is a modern development of homes and apartments in Raynes Park, London. Offering a mix of 1- and 2-bedroom, plus 3- and 4-bedroom homes, this precisely planned community is sure to appeal to a range of potential homebuyers, including first-time buyers, families, young professionals, and London commuters.

Features

- Allocated Parking Available
- Two Bedrooms
- Two Bathrooms
- Open-Plan Kitchen/Lounge
- Terrace
- New Homes Development
- New Build Warranty
- Raynes Park

Meadowview Road, Raynes Park, SW20



Dexters

New Homes South London
12 The Broadway
London
SW19 1RF
Sales
020 8674 4555

Energy Rating: . We aim to make our particulars both accurate and reliable. However they are not guaranteed; nor do they form part of an offer or contract. If you require clarification on any points then please contact us, especially if you're traveling some distance to view. Please note that appliances and heating systems have not been tested and therefore no warranties can be given as to their good working order.

 **RICS** | Regulated
Estate Agent
and Letting Agent

[dexters.co.uk](https://www.dexters.co.uk)