



## Cavendish Grove, SW20

### £815,000

The Taylor is a three bedroom, two bathroom home, split over two levels with an allocated parking space. There is an energy efficient design, as well as plenty of built in storage, and a downstairs W.C.

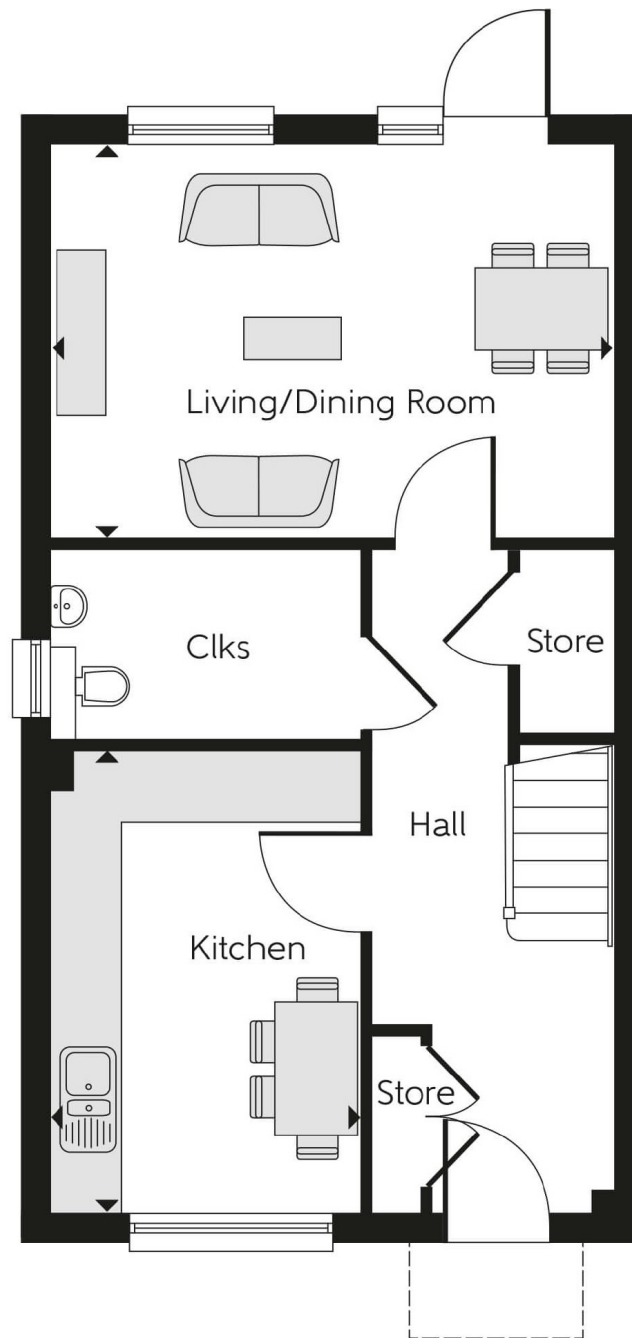
**\*\* Please note, some additional photographs from the show home within the same development have been used \*\***

Cavendish Grove is a modern development of homes and apartments in Raynes Park, London. Offering a mix of 1- and 2-bedroom, plus 3- and 4-bedroom homes, this precisely planned community is sure to appeal to a range of potential homebuyers, including first-time buyers, families, young professionals, and London commuters.

### Features

- Allocated Parking Space
- Brand New And Chain Free
- Three Bedrooms
- Two Bathrooms
- Open-Plan Ground-Floor Layout
- 10-year NHBC Buildmark Policy
- Dual-Access En suite Bathroom
- Modern Spacious Living Room

# Cavendish Grove, Raynes Park, SW20



## Dexters

New Homes South London  
12 The Broadway  
London  
SW19 1RF  
Sales  
020 8674 4555

Energy Rating: . We aim to make our particulars both accurate and reliable. However they are not guaranteed; nor do they form part of an offer or contract. If you require clarification on any points then please contact us, especially if you're traveling some distance to view. Please note that appliances and heating systems have not been tested and therefore no warranties can be given as to their good working order.

 **RICS** | Regulated  
Estate Agent  
and Letting Agent

[dexters.co.uk](https://www.dexters.co.uk)