



Yelverton Road, SW11

£625,000

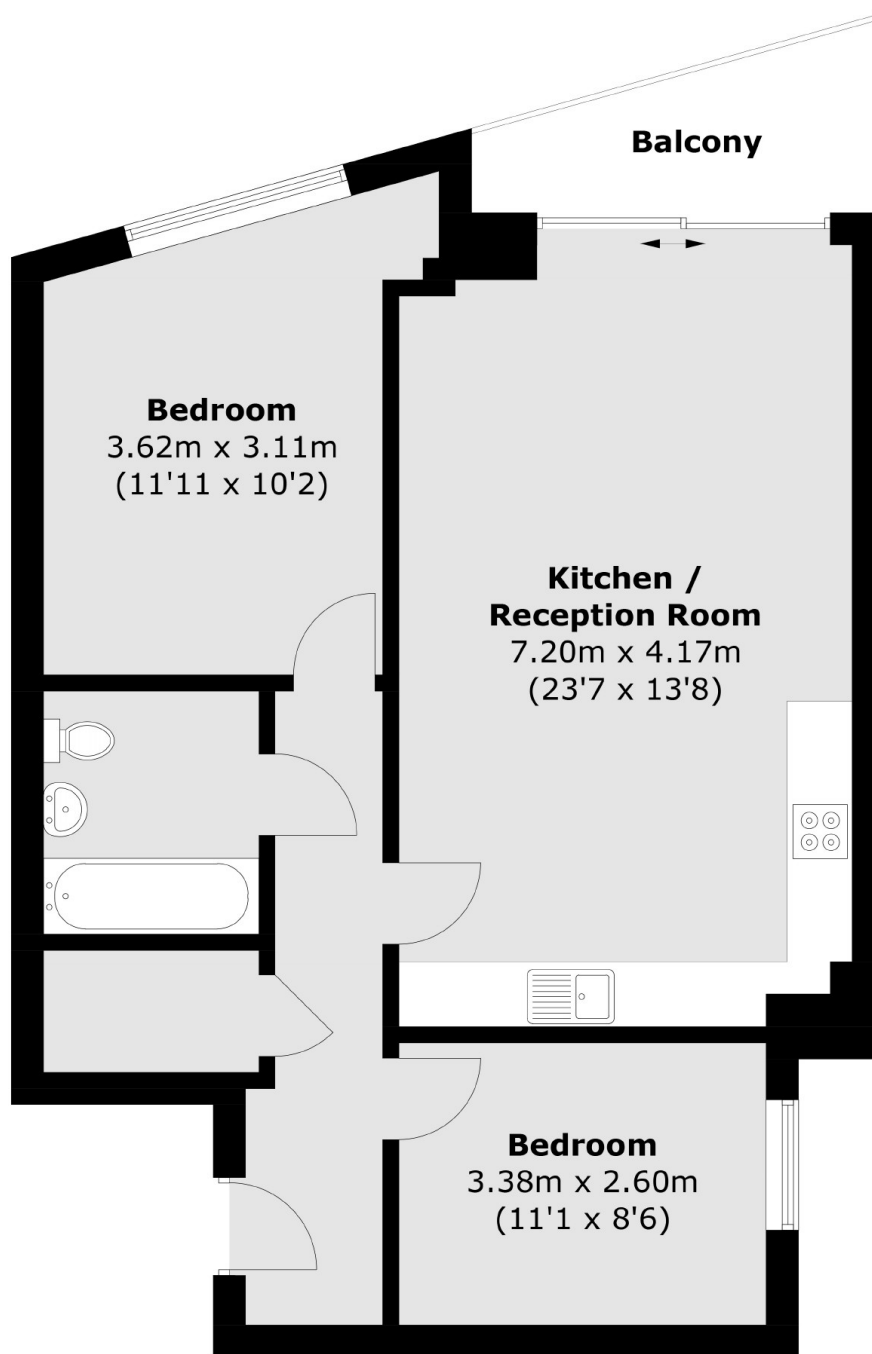
A large lateral apartment with far reaching views on the thirteenth floor. There is a useful storage room, mechanical ventilation system and underfloor heating. There is a communal podium garden as well as a concierge and bike store within the development.

Yelverton Road Is conveniently located for access to Clapham Junction Station as well as the nightlife of both Clapham and Battersea. Near to both Battersea Power Station & Chelsea you are never far from food, drinks and entertainment.

Features

- Concierge In Building
- Fifteenth Floor
- + 700 Square Feet
- Two Double Bedrooms
- Near To Battersea Park
- Near Battersea Power Station

Yelverton Road,
Battersea, SW11



Total area (approx.): 68.1 sq. m (733.0 sq. ft)
Balcony: 4.7 sq. m (50.6 sq. ft)

Dexters

New Homes South London
12 The Broadway
London
SW19 1RF
Sales
020 8674 4555

Energy Rating: . We aim to make our particulars both accurate and reliable. However they are not guaranteed; nor do they form part of an offer or contract. If you require clarification on any points then please contact us, especially if you're traveling some distance to view. Please note that appliances and heating systems have not been tested and therefore no warranties can be given as to their good working order.

 **RICS** | Regulated
Estate Agent
and Letting Agent

[dexters.co.uk](https://www.dexters.co.uk)