



## Solomons Passage, SE15

£682,000

Rye Parkside is a brand-new collection of 59 beautifully appointed apartments, set just moments from one of London's most beloved green spaces. Designed with modern living in mind, each home combines style and practicality. Interiors feature Quartz kitchen worktops, integrated appliances, terrazzo bathroom tiles and bespoke fitted wardrobes, offering a refined and contemporary finish throughout.

\*Please note: Only one promotional offer can be applied per purchase. Offers cannot be combined. Act fast-these exclusive offers are only available for a limited number of units.

This rare park-side setting provides a peaceful retreat from city life, while still being perfectly connected. Residents are within a mile of both Peckham Rye and Nunhead stations, ensuring effortless access across London.

### Features

- Gated Underground Parking \*
- Developer Incentives Available
- Two Double Bedrooms
- Two Bathrooms
- Large Balcony or Terrace
- Underfloor Heating
- German Appliances
- Quartz Worktops

# Solomons Passage, Peckham Rye, SE15

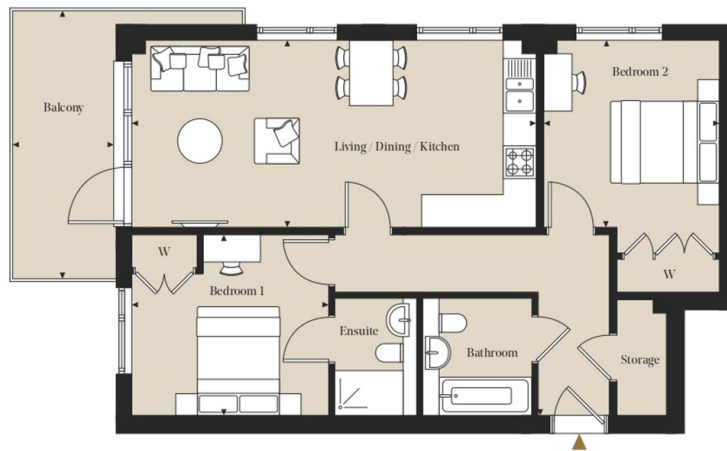
Rye Parkside/Block A

## Two Bedrooms

Apartments: A11, A21, A31 & A41

Floors: 01, 02, 03 & 04

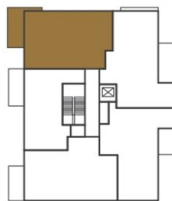
Total internal area  
72.1 sq m / 776.4 sq ft



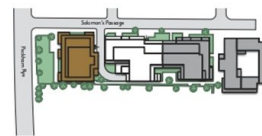
### Room Dimensions

Living/Dining/Kitchen	7.41m x 3.44m	24' 4" x 11' 3"
Bedroom 1	3.61m x 3.32m	11' 10" x 10' 11"
Bedroom 2	3.23m x 4.63m	10' 7" x 15' 2"

### Plot Locator (Floor 01)



### Siteplan



◀▶ Measurement Points W Wardrobe

All measurements are approximate and are taken at maximum widths and lengths of rooms. Plans are drawn to scale at a design phase and may vary during build. Kitchens and wardrobes sizes and layouts may differ to those shown. Furniture layouts are indicative only (where they appear). All total sqft and sqm are gross measurements. Window styles and positions may vary. Floorplans are not to scale.