



## Solomons Passage, SE15

### £835,000

Exclusive Incentives Available including - 5% Deposit Contribution Paid. \* Stamp Duty Paid (FTB rate): First-time buyers can enjoy further savings with Stamp Duty covered. Schedule a viewing today and secure your dream apartment!

Rye Parkside is a brand-new collection of 59 beautifully appointed apartments, set just moments from one of London's most beloved green spaces. Designed with modern living in mind, each home combines style and practicality. Interiors feature Quartz kitchen worktops, integrated appliances, terrazzo bathroom tiles and bespoke fitted wardrobes, offering a refined and contemporary finish throughout.

\*Please note: Only one promotional offer can be applied per purchase. Offers cannot be combined. Act fast-these exclusive offers are only available for a limited number of units.

This rare park-side setting provides a peaceful retreat from city life, while still being perfectly connected. Residents are within a mile of both Peckham Rye and Nunhead stations, ensuring effortless access across London.

### Features

- Gated Underground Parking \*
- Developer Incentives Available
- Three Bedrooms
- Two Bathrooms
- Large Balcony or Terrace
- Underfloor Heating
- German Appliances
- Quartz Worktops

# Solomons Passage, Peckham Rye, SE15

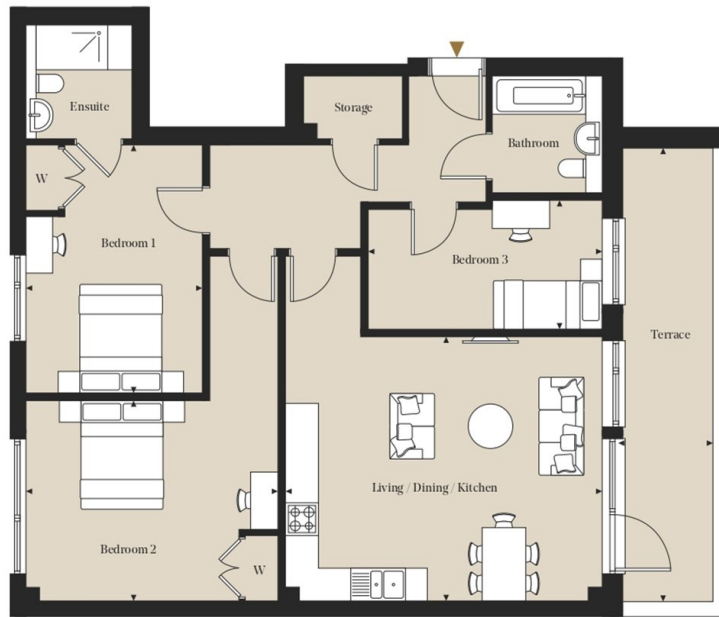
Rye Parkside/Block B

## Three Bedrooms

Apartment: B52

Floor: 05

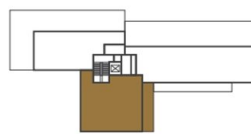
Total internal area  
99.8 sq m / 1,074.1 sq ft



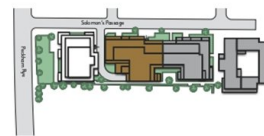
### Room Dimensions

Living/Dining/Kitchen	5.80m x 6.34m	19' 0" x 20' 10"
Bedroom 1	3.25m x 4.56m	10' 8" x 14' 11"
Bedroom 2	4.64m x 6.34m	15' 3" x 20' 10"
Bedroom 3	4.29m x 2.37m	14' 1" x 7' 9"

### Plot Locator (Floor 05)



### Siteplan



► Measurement Points W Wardrobe

All measurements are approximate and are taken at maximum widths and lengths of rooms. Plans are drawn to scale at a design phase and may vary during build. Kitchens and wardrobes sizes and layouts may differ to those shown. Furniture layouts are indicative only (where they appear). All total sqft and sqm are gross measurements. Window styles and positions may vary. Floorplans are not to scale.

# Dexters

New Homes South London  
12 The Broadway  
London  
SW19 1RF  
Sales  
020 8674 4555

Energy Rating: . We aim to make our particulars both accurate and reliable. However they are not guaranteed; nor do they form part of an offer or contract. If you require clarification on any points then please contact us, especially if you're traveling some distance to view. Please note that appliances and heating systems have not been tested and therefore no warranties can be given as to their good working order.

**RICS** Regulated  
Estate Agent  
and Letting Agent

dexters.co.uk