



Beatrice Place, SW19

£1,589,000

A brilliant four/five-bedroom, three bathroom family home with two reception rooms. This property offers a versatile layout with flexible living space throughout. The property is conveniently located for access to Putney, Wimbledon, Wandsworth and Southfields.

** Please note, some additional photographs from the show home within the same development have been used
**

Features

- Four/Five Bedrooms
- Three Bathrooms
- Two Reception Rooms
- Downstairs W.C
- Four Generous Floors
- Roof Terrace & Balcony
- Driveway Parking Space
- Versatile Living Space



Beatrice Place, SW19

The communal areas are extremely well maintained and there is a communal garden for the benefit of all residents. The real benefit of this property is its proximity to green outside spaces. It is near Wimbledon Common, the AELTC Tennis Courts, Wimbledon Park, Wimbledon Park Golf Course as well as Richmond Park and Putney Heath.



Beatrice Place, Wimbledon, SW19

TOWNHOUSE D

HOUSES 34-35
5 BEDROOMS
205.8 sqm 2,215 sqft

GROUND FLOOR

BEDROOM 5	3.3m x 2.7m	30'4" x 8'10"
FAMILY/DRINKING/KITCHEN	6.4m x 4.9m	21'0" x 16'1"
REAR GARDEN*	20.9 sqm	224.9 sqft

FIRST FLOOR

BEDROOM 2	3.9m x 4.6m	12'9" x 15'1"
LIVING ROOM	4.0m x 4.9m	13'2" x 16'1"

SECOND FLOOR

BEDROOM 3	4.0m x 4.9m	13'2" x 16'1"
BEDROOM 4	3.9m x 4.6m	12'9" x 15'1"

THIRD FLOOR

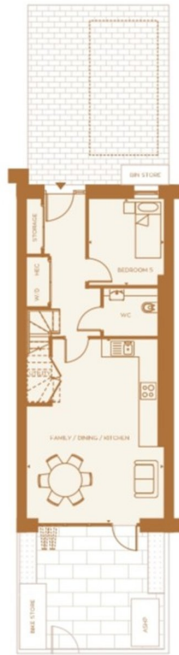
MASTER BEDROOM	7.4m x 4.9m	24'4" x 16'1"
TERRACE	18.2 sqm	195.9 sqft



*Garden sizes vary
This image is for illustrative purposes only
The full legal disclaimer can be found on the back
page of this brochure. Accurate as at March 2016

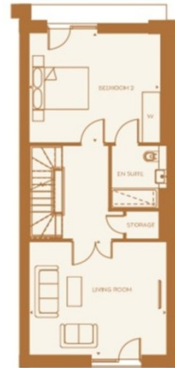
0
34

GROUND FLOOR

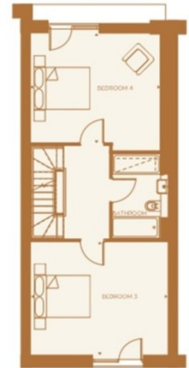


2

FIRST FLOOR



SECOND FLOOR



THIRD FLOOR



W WARDROBE WD WASHER DRYER HEC HEATING/ELECTRICAL COMPONENTS PAVED SPACES ASHP AIR SOURCE HEAT PUMP

0
35