

## Brondesbury Park, NW6

£1,100,000

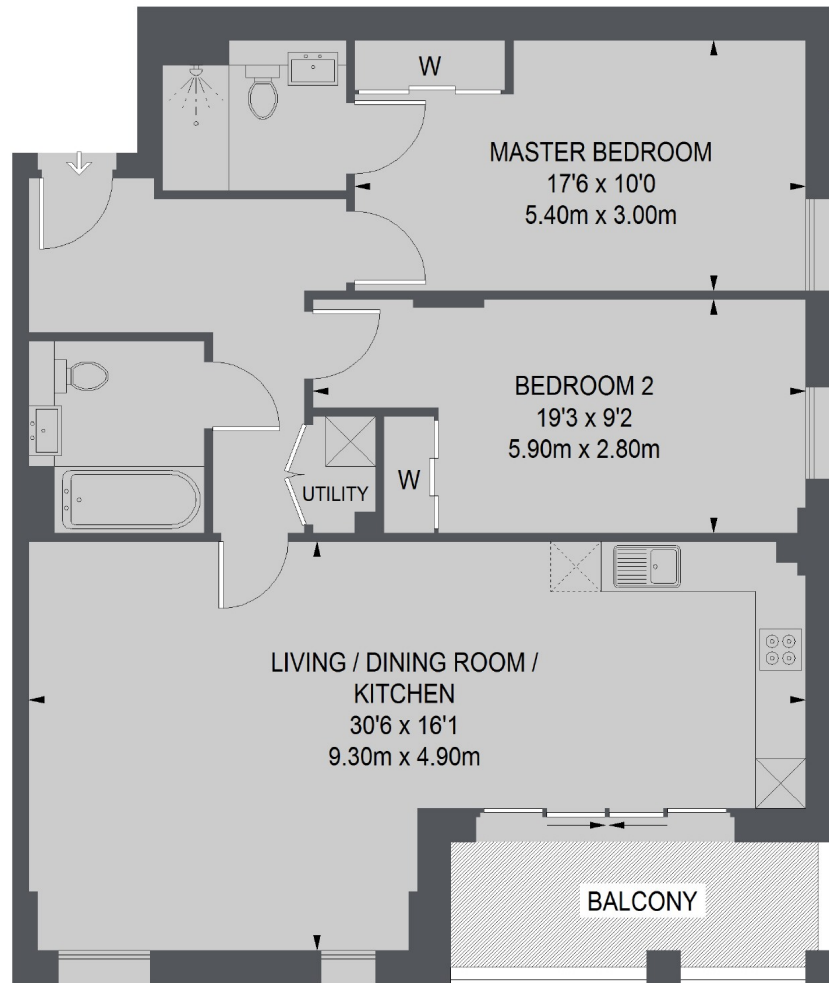
Bright and spacious 985 sq ft, two bed, two bath apartment with SOUTH-FACING living room and balcony. Located on the first floor of The Avenue; your healthy London lifestyle begins here with a feeling of a prestigious members' club.

Brondesbury Park is situated close to a variety of local amenities in Queens Park, with numerous restaurants, shops and café's. It is also located within walking distance of the Bakerloo line, Jubilee line and the Brondesbury Park overground station.

### Features

- Luxury Gated Development
- Residents Gym
- Concierge Service
- Residents Courtyard
- Secure Parking available

## The Avenue, London, NW6



FIRST FLOOR

TOTAL APPROX. FLOOR AREA 915 SQ. FT. (84.53 SQ. M.)

### Contact

To arrange a viewing call our office on the number below or visit our website.



Energy Rating: . We aim to make our particulars both accurate and reliable. However they are not guaranteed; nor do they form part of an offer or contract. If you require clarification on any points then please contact us, especially if you're traveling some distance to view. Please note that appliances and heating systems have not been tested and therefore no warranties can be given as to their good working order.