

## Brondesbury Park, NW6

£1,305,000

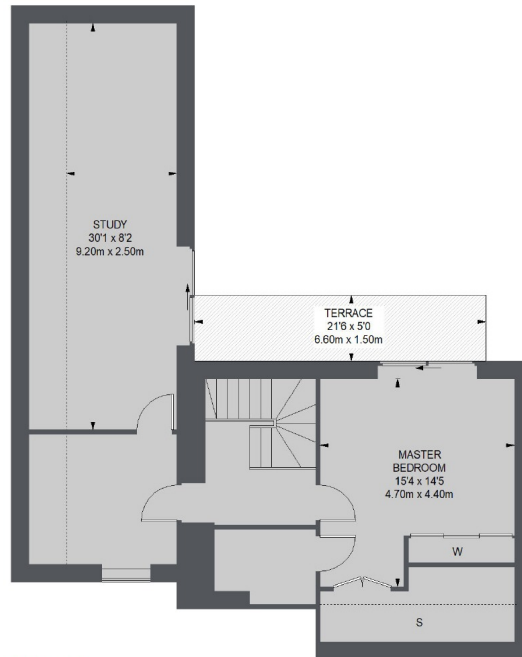
Bright and spacious 1445 sq ft, three bedroom apartment with SOUTH-FACING living room and three balconies. Located on the second and third floor of The Avenue; with CONCIERGE available 7 days a week and a well equipped residents GYM.

Brondesbury Park is situated close to a variety of local amenities in Queens Park, with numerous restaurants, shops and café's. It is also located within walking distance of the Bakerloo line, Jubilee line and the Brondesbury Park overground station.

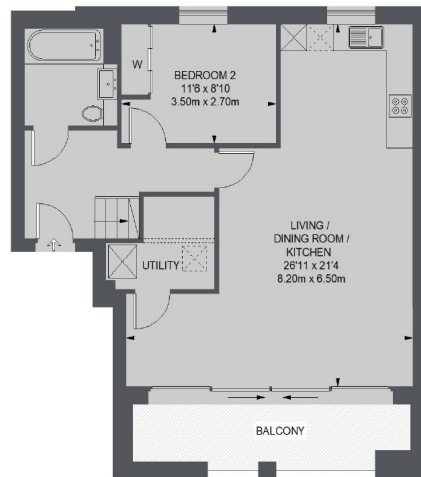
### Features

- Luxury gated development
- Open plan living
- Residents gym
- Concierge Service
- Courtyard gardens
- Secure Underground Parking

## The Avenue, London, NW6



THIRD FLOOR



SECOND FLOOR

TOTAL APPROX. FLOOR AREA 1444 SQ. FT. (134.24 SQ. M.)

### Contact

To arrange a viewing call our office on the number below or visit our website.



Energy Rating: TBA. We aim to make our particulars both accurate and reliable. However they are not guaranteed; nor do they form part of an offer or contract. If you require clarification on any points then please contact us, especially if you're traveling some distance to view. Please note that appliances and heating systems have not been tested and therefore no warranties can be given as to their good working order.