



The Boulevard, SW6
£1,100,000

Waterview


A stunning two double bedroom apartment in this exclusive riverside development with the benefit of a large 33' south facing private terrace creating a hidden oasis.

Imperial wharf is an award-winning development by St George set next to the Thames with a wide selection of bars, restaurants and easy access to Imperial Wharf Station and The Kings Road.





Accommodation is made up of entrance hall leading to an impressive living room, open onto a stylish integrated kitchen with breakfast bar, dining area and reception space with solid wood flooring.

There are patio doors to a wonderful south facing private terrace which can also be accessed from both bedrooms.

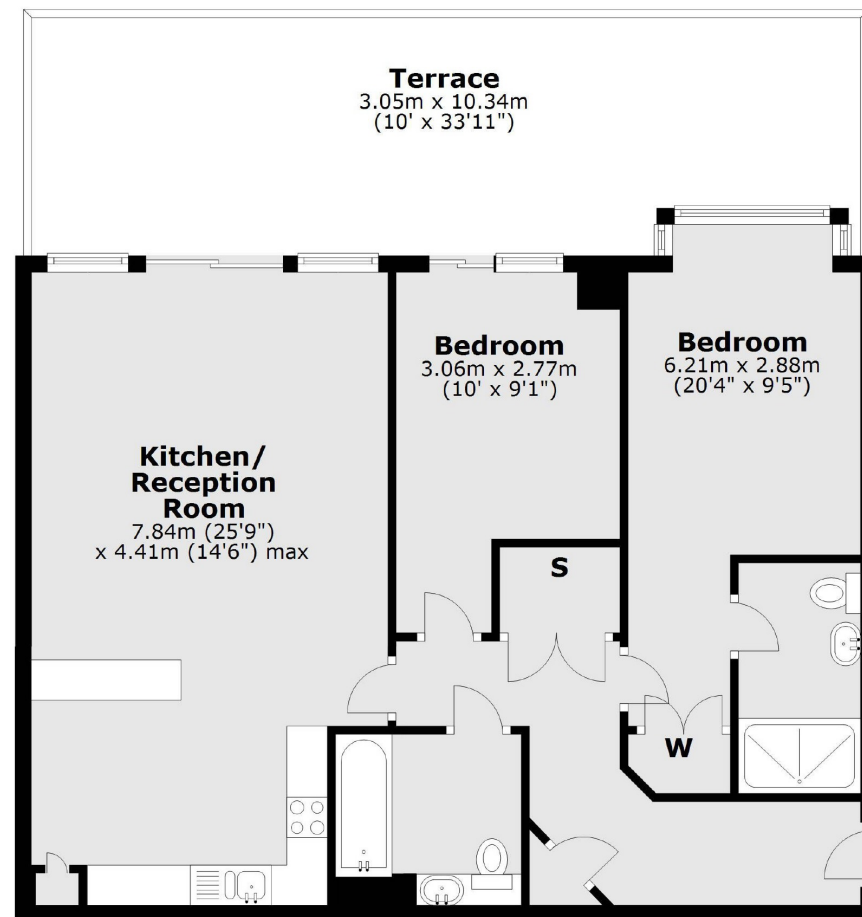
The terrace has space for dining and sun loungers, measuring 33' in width. The spacious Master bedroom has built-in wardrobes and a luxury en-suite. The second double bedroom also has fitted wardrobes. There is also a beautiful second bathroom. This stunning apartment benefits from air conditioning, lift service and an excellent concierge.

Features

Stunning Apartment
Two Double Bedrooms
Two Bathrooms
Private Terrace
South Facing
Riverside



The Boulevard, Fulham, SW6



Second Floor

Total area: approx. 80.9 sq. metres (870.9 sq. feet)

Contact

To arrange a viewing call our office on the number below or visit our website.



Energy Rating: C. We aim to make our particulars both accurate and reliable. However they are not guaranteed; nor do they form part of an offer or contract. If you require clarification on any points then please contact us, especially if you're traveling some distance to view. Please note that appliances and heating systems have not been tested and therefore no warranties can be given as to their good working order.

