



The Boulevard, SW6  
£650,000

Waterview  


OFFERS IN THE REGION OF. A stylish and modern two double bedroom, two bathroom apartment with lift service and a large private terrace set on the third floor of this impressive riverside development in Fulham.

Imperial Wharf is a modern built riverside development by award winning developer St.George with a range of popular bars and restaurants with it's own tube station and riverbus service.





Accommodation is made up of entrance hall leading to a spacious double reception room with glass sliding doors to a full width balcony and there are doors to a modern integrated kitchen. There are two double bedrooms, one with access to balcony and the other with en-suite.

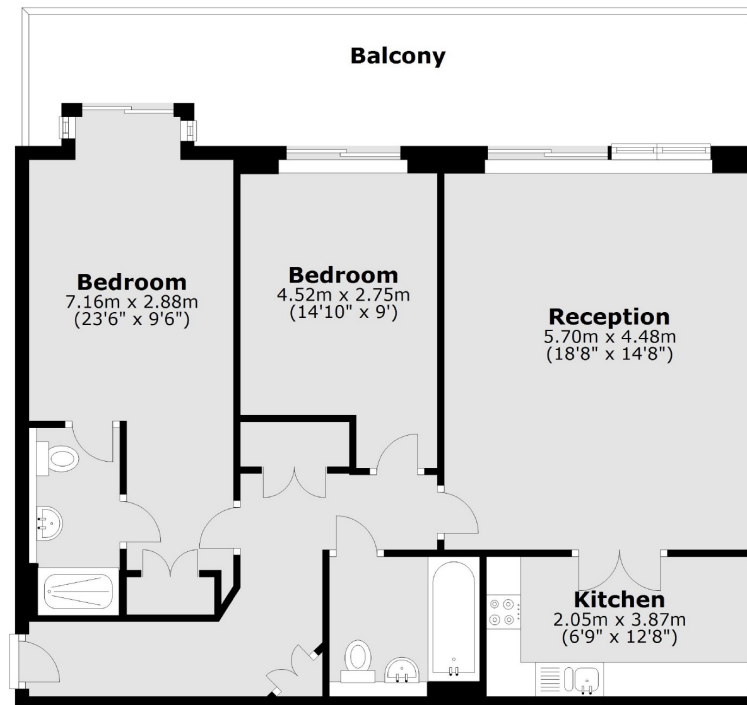
There is also a further family bathroom. The block has lift access, option for secure underground parking and an excellent concierge service.

### Features

- Prestigious Development
- Two Double Bedrooms
- Large Balcony
- Two Bathrooms
- Excellent Concierge
- River Access



# The Boulevard, Imperial Wharf, SW6



Main area: Approx. 83.7 sq. metres (901.3 sq. feet)  
Plus balconies, approx. 20.4 sq. metres (219.1 sq. feet)

## Contact

To arrange a viewing call our office on the number below or visit our website.



Energy Rating: B. We aim to make our particulars both accurate and reliable. However they are not guaranteed; nor do they form part of an offer or contract. If you require clarification on any points then please contact us, especially if you're traveling some distance to view. Please note that appliances and heating systems have not been tested and therefore no warranties can be given as to their good working order.



Regency House

Roca