



Thorney Crescent, SW11
£1,175,000

Waterview


A rare opportunity to purchase this impressive split level penthouse with fantastic river views from private balconies set within this exclusive low rise riverside development.

Morgans Walk is located off Battersea Church Street close to the popular shops and restaurants of Battersea Square.





Accommodation is made up of three double bedrooms, one with en-suite, and a family bathroom. On the upper level a generous 31' living space has a reception area with high vaulted ceiling and doors to the river facing balconies and further dining area. There is a separate kitchen/breakfast room.

The property would benefit from a cosmetic update to create the dream home. There is a private garage included within the sale.

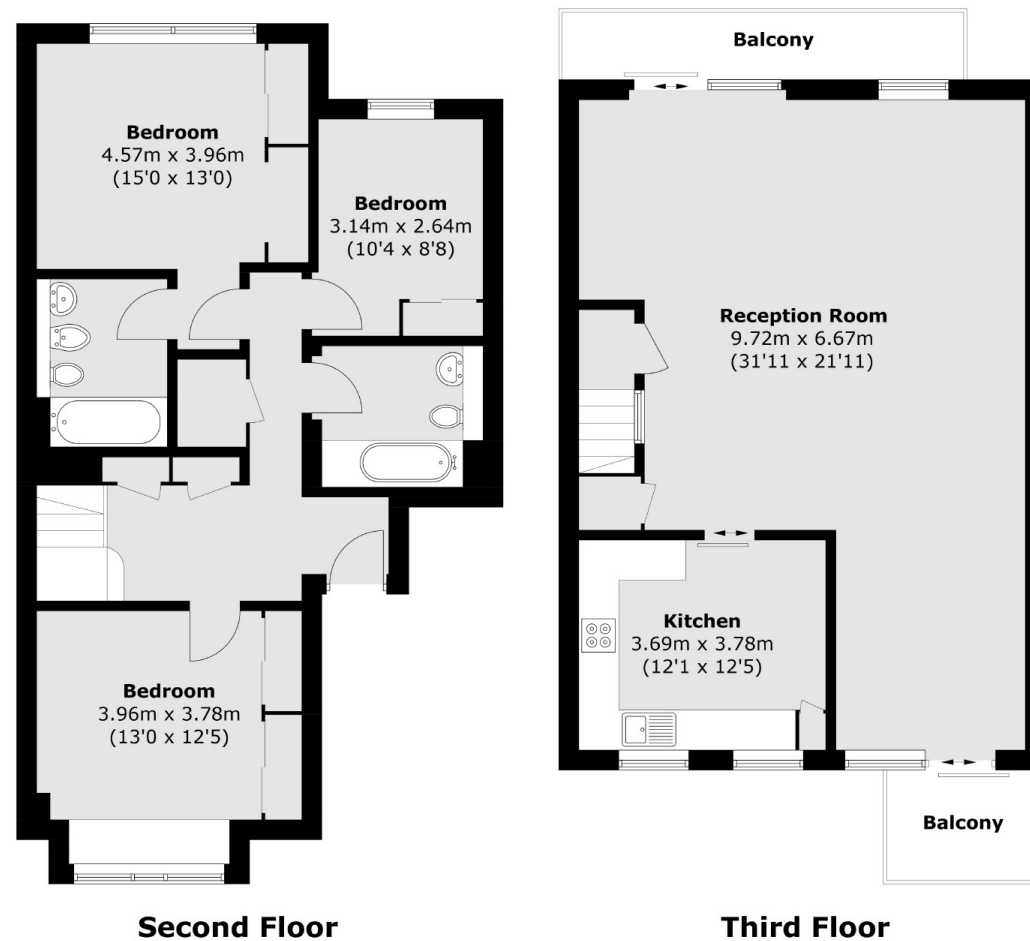
Residents benefit from well kept communal gardens and The Kings Road is a short walk over Battersea Bridge.

Features

- Split Level Penthouse
- Three Bedrooms
- Large Living Space
- River Views
- Garage
- Private Balconies



Thorney Crescent, Battersea, SW11



Total area (approx.): 129.7 sq. m (1,396.1 sq. ft)
Balcony: 9.9 sq. m (106.6 sq. ft)

Contact

To arrange a viewing call our office on the number below or visit our website.



Energy Rating: C. We aim to make our particulars both accurate and reliable. However they are not guaranteed; nor do they form part of an offer or contract. If you require clarification on any points then please contact us, especially if you're traveling some distance to view. Please note that appliances and heating systems have not been tested and therefore no warranties can be given as to their good working order.

