



Vicarage Crescent, SW11
£795,000

Waterview


A bright and spacious two double bedroom top floor penthouse with breathtaking views of The Thames and London beyond from a large roof terrace and further balcony set next to Battersea Square.

Vicarage Crescent is located next to Battersea Square with a range of boutique shops and restaurants.





Accommodation is made up of a large entrance hall/office space, with doors to terrace, leading to a 22' double reception room with double aspect and further doors to the roof terrace and further balcony. There is an integrated kitchen with city views, two double bedrooms, a family bathroom and separate W.C.

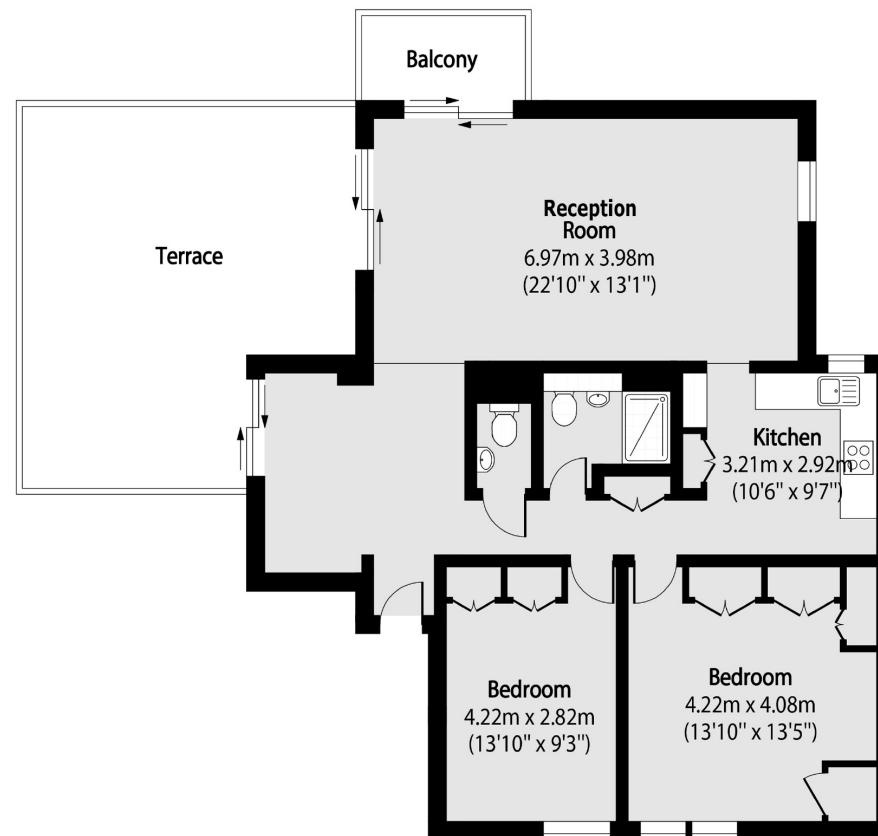
The terrace measures 20'x18' and is the perfect entertaining space to take in the view. The penthouse has secure parking within this gated development with lift access, full time caretakers and hot water and heating included within the service charge.

Features

- Penthouse
- River Terrace
- Incredible Views
- Secure Development
- Caretaker Service
- 1,000 sq ft



Vicarage Crescent, Battersea, SW11



Total area (approx): 92.68 sq m (998 sq. ft)

Terrace total area (approx): 30.69 sq m (330 sq. ft)

Balcony total area (approx): 3.78 sq m (41 sq. ft)

Contact

To arrange a viewing call our office on the number below or visit our website.



Energy Rating: C. We aim to make our particulars both accurate and reliable. However they are not guaranteed; nor do they form part of an offer or contract. If you require clarification on any points then please contact us, especially if you're traveling some distance to view. Please note that appliances and heating systems have not been tested and therefore no warranties can be given as to their good working order.

