



## Station Court, SW6

£375,000



A spacious one double bedroom apartment located adjacent to Imperial Wharf and The Thames. On completion offered with an extended lease of 167 years

Accommodation is made up of entrance hall leading to a spacious living room and adjoining kitchen. There is a double bedroom with built in wardrobes and a stylish, recently fitted shower room.

There is lift access to the apartment and an affordable service of £2,330 per annum.

Station Court is located on Townmead Road, opposite Imperial Wharf, a stone's throw from the station and with a good selection of local shops and restaurants nearby.

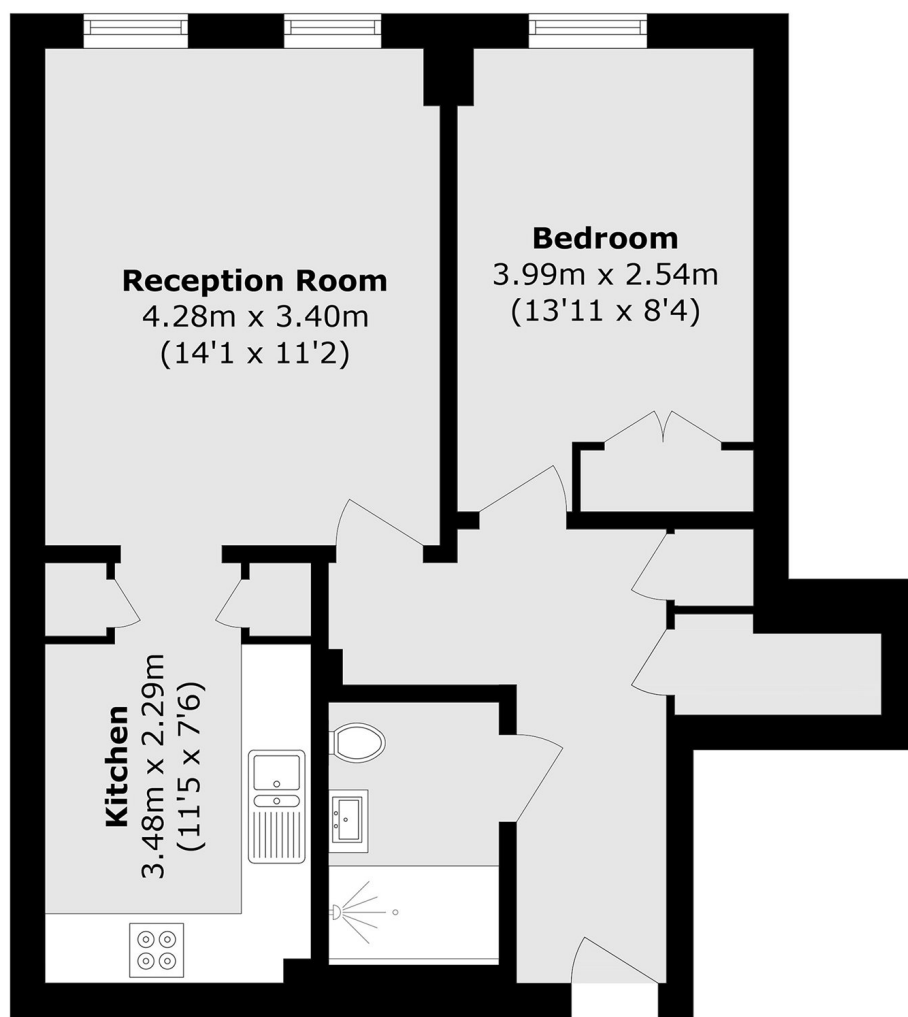
### Features

One Bedroom Apartment  
515 sq ft  
Lift Service  
New Shower Room  
Extended Lease  
Good Value





## Station Court, London, SW6



Total area (approx.): 47.9 sq. m (515.6 sq. ft)

### Contact

To arrange a viewing call our office on the number below or visit our website.



Energy Rating: . We aim to make our particulars both accurate and reliable. However they are not guaranteed; nor do they form part of an offer or contract. If you require clarification on any points then please contact us, especially if you're traveling some distance to view. Please note that appliances and heating systems have not been tested and therefore no warranties can be given as to their good working order.