



William Morris Way, SW6

£675,000



A well presented two double bedroom apartment with private balcony overlooking The Thames set within this riverside development.

Accommodation is made up of entrance hall leading to a 21ft double reception room with space for dining and sliding doors to the river facing balcony. There is a stylish, integrated modern kitchen which also overlooks the river. The principal double bedroom has a range of built-in wardrobes and en-suite bathroom. There is a second double bedroom and further family bathroom. The development benefits from an excellent concierge service and secure parking.

William Morris Way runs parallel to The Thames in Fulham with an excellent selection of shops and restaurants nearby.

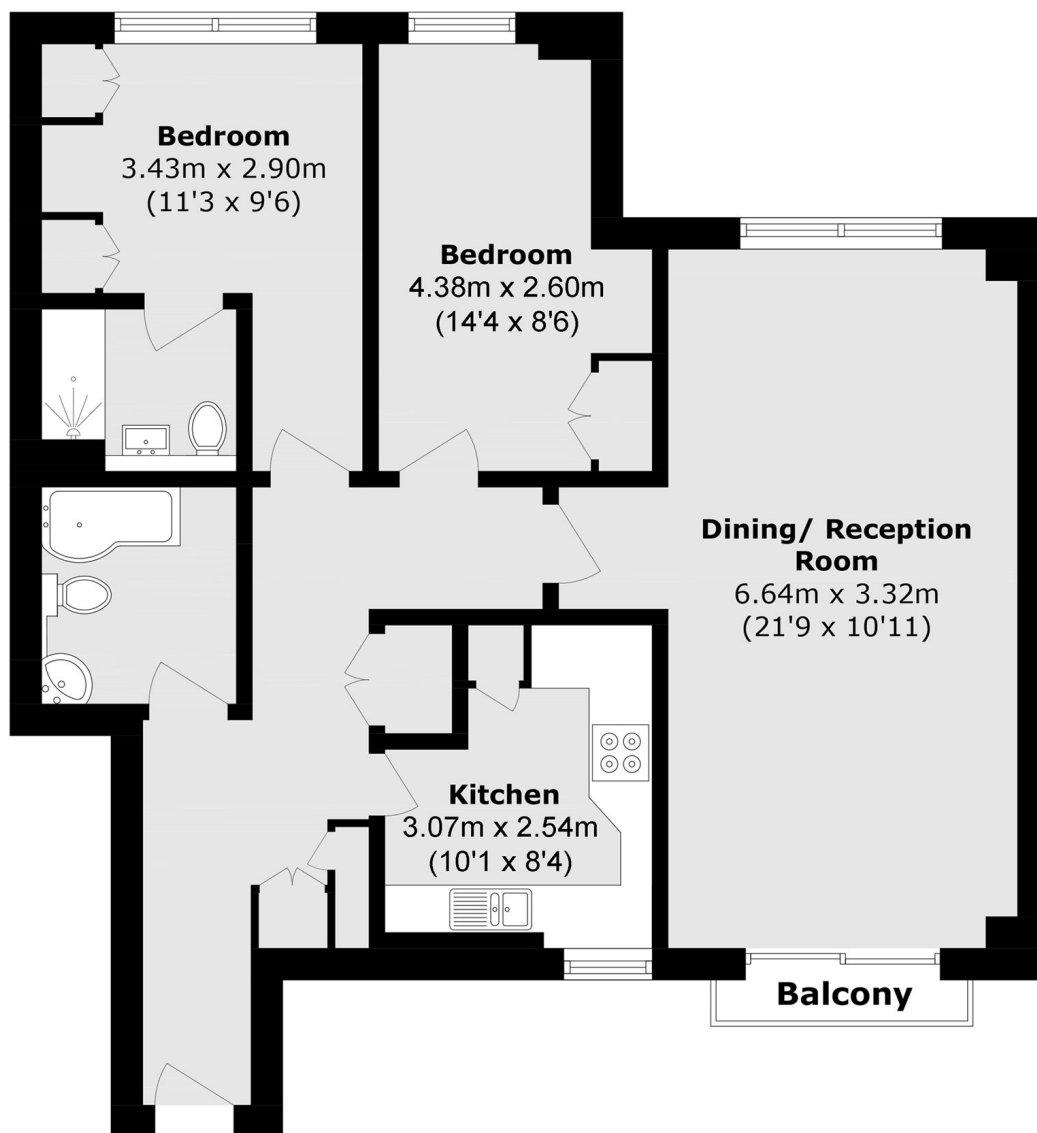
### Features

- Riverside Apartment
- Two Double Bedrooms
- Two Bathrooms
- Parking
- Long Lease
- No Chain





## William Morris Way, London, SW6



Total area (approx.): 71.8 sq. m (772.8 sq. ft)  
Balcony total (approx.): 1.0 sq. m (10.7 sq. ft)

### Contact

To arrange a viewing call our office on the number below or visit our website.



Energy Rating: B. We aim to make our particulars both accurate and reliable. However they are not guaranteed; nor do they form part of an offer or contract. If you require clarification on any points then please contact us, especially if you're traveling some distance to view. Please note that appliances and heating systems have not been tested and therefore no warranties can be given as to their good working order.