



Bridges Court Road, SW11

£499,950

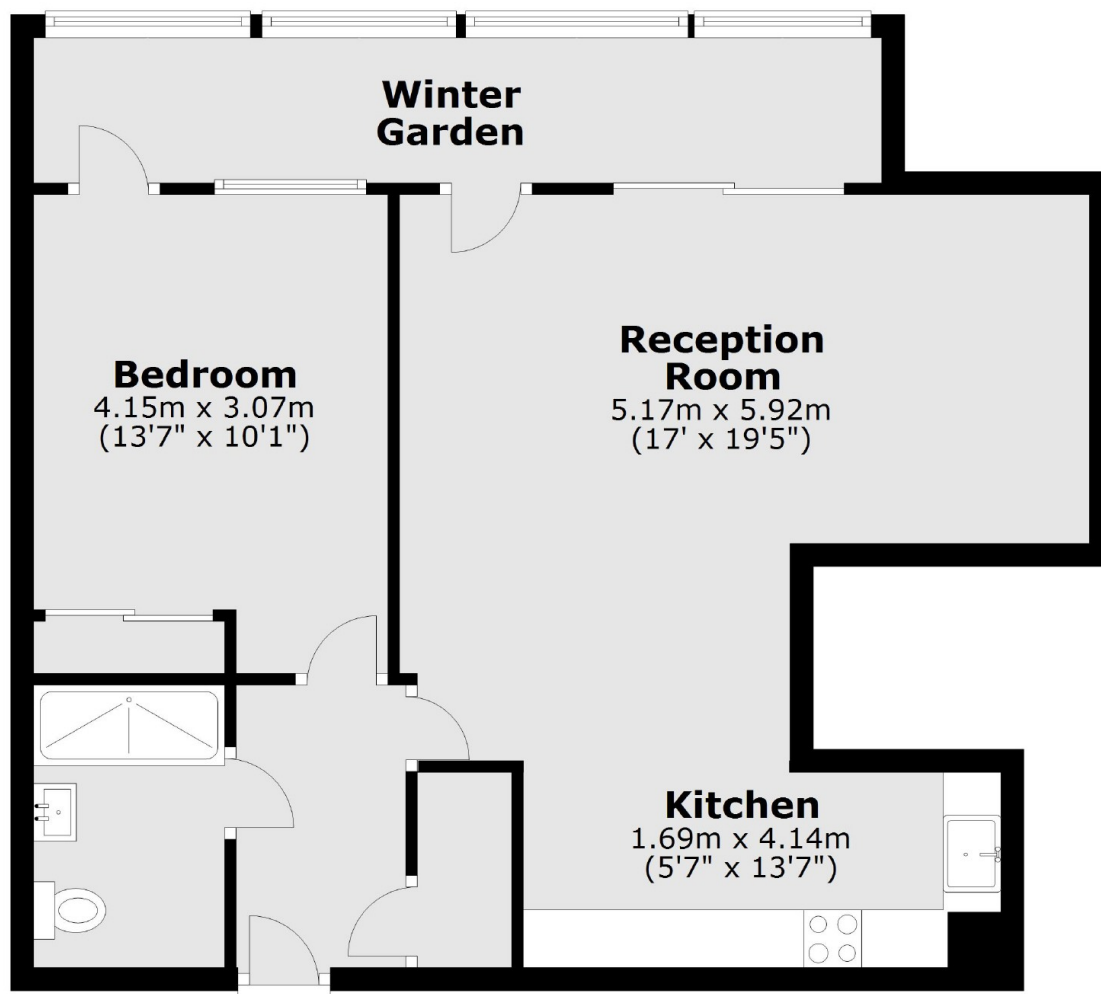
A bright and spacious apartment with breathtaking views of the River Thames and London beyond with it's own internal balcony, open plan living and luxury bathroom.

Bridges Court Road is located off York Road by The Thames at Battersea.

Features

- Spacious Apartment
- River Views
- Concierge Service
- Stylish Bathroom
- Enclosed Balcony
- Lift Service

Bridges Court Road,
London, SW11



Total area: approx. 65.6 sq. metres (706.3 sq. feet)

Contact

To arrange a viewing call our office on the number below or visit our website.



Energy Rating: B. We aim to make our particulars both accurate and reliable. However they are not guaranteed; nor do they form part of an offer or contract. If you require clarification on any points then please contact us, especially if you're traveling some distance to view. Please note that appliances and heating systems have not been tested and therefore no warranties can be given as to their good working order.