



Park Street, SW6

£455,000

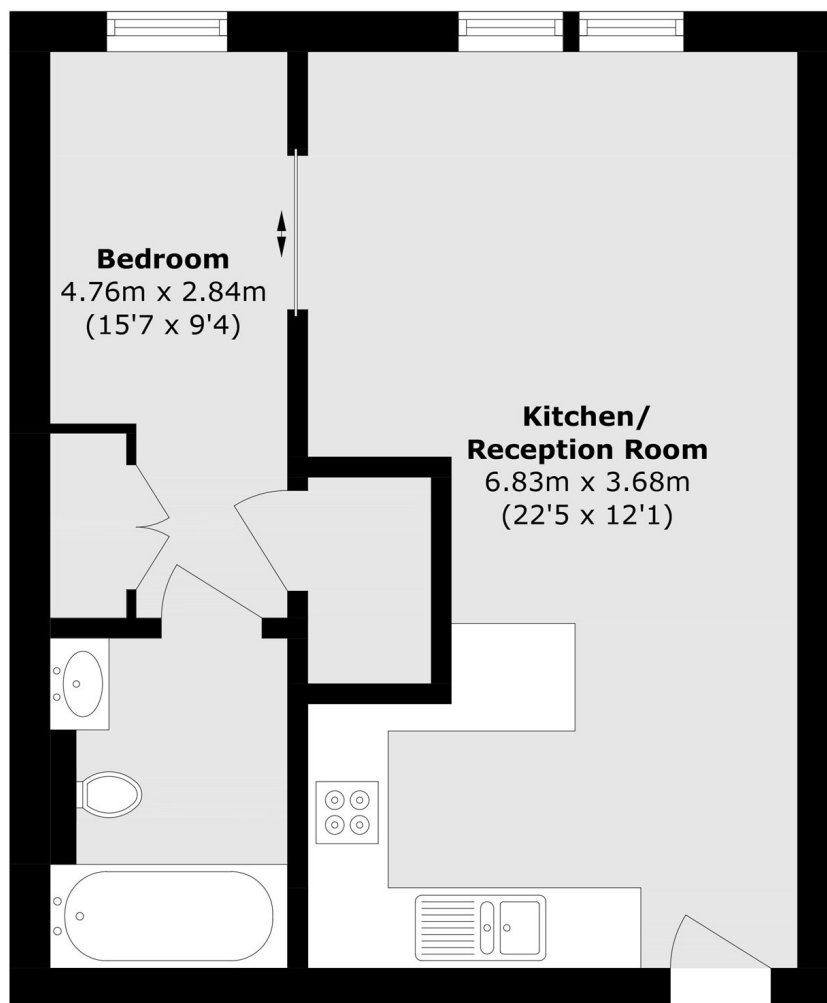
A bright, beautifully presented Manhattan apartment measuring 409 sq ft with stylish interiors, wood flooring, comfort cooling, 24hr concierge and resident's spa/swimming pool.

Chelsea Creek is an exclusive, modern built development with resident's parking a stone's throw from Imperial Wharf Station.

Features

- Manhattan Apartment
- Chain Free
- Stylish Interiors
- Spa, Pool and Gym
- 24hr Concierge
- Parking

Park Street,
London, SW6



Third Floor

Total area (approx.): 38.0 sq. m (409.0 sq. ft)

Contact

To arrange a viewing call our office on the number below or visit our website.



Energy Rating: C. We aim to make our particulars both accurate and reliable. However they are not guaranteed; nor do they form part of an offer or contract. If you require clarification on any points then please contact us, especially if you're traveling some distance to view. Please note that appliances and heating systems have not been tested and therefore no warranties can be given as to their good working order.