



William Morris Way, SW6
£1,350,000

Waterview


A beautiful and substantial, four bedroom riverside apartment measuring 2,300 sq ft with great lateral space and stunning river views from two private balconies.

William Morris Way runs parallel to The Thames, opposite the famous Harbour Club within a short walk of Imperial Wharf Tube.





Accommodation is made up of entrance hall leading to a 30ft double reception room with dining area and doors to river facing balcony. There is a stylish modern kitchen and guest W.C.

The principal bedroom suite measures 38ft with a four piece en-suite and doors to the riverside balcony. There are two further double bedrooms, one with en-suite, a further single bedroom/study and family bathroom. There are two secure underground parking spaces, well kept communal gardens with direct access to the river towpath and an excellent concierge services.

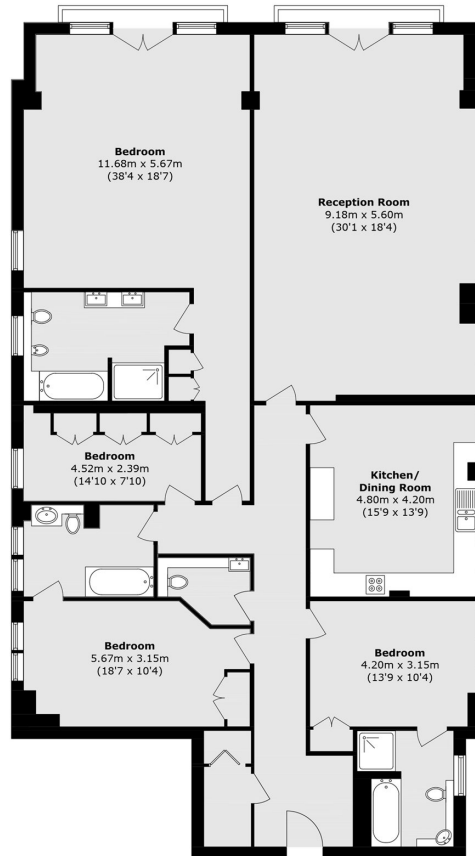
The sale is subject to probate, which has been applied for and is offered with vacant possession.

Features

Riverside Apartment
2,300 sq ft
Four Bedrooms
Two Balconies
Two Parking Spaces
Excellent Concierge



William Morris Way, Fulham, SW6



Third Floor

Total Area (approx.): 214.9 sq. m (2313.1 sq. ft)

Contact

To arrange a viewing call our office on the number below or visit our website.



Energy Rating: C. We aim to make our particulars both accurate and reliable. However they are not guaranteed; nor do they form part of an offer or contract. If you require clarification on any points then please contact us, especially if you're traveling some distance to view. Please note that appliances and heating systems have not been tested and therefore no warranties can be given as to their good working order.

