



York Place, SW11

£595,000



A stunning one double bedroom apartment on the sixth floor of this exclusive modern built development with a private balcony.

Accommodation is made up of entrance hall leading to an impressive 30ft open plan living area with space for dining, contemporary kitchen and access to a private balcony offering fantastic views of London beyond. The double bedroom has a range of built-in wardrobes and access to the balcony. There is a stylish modern bathroom and large utility cupboard. Residents benefit from a gym, resident's lounge/work space and 24hr concierge. Parking is available to rent.

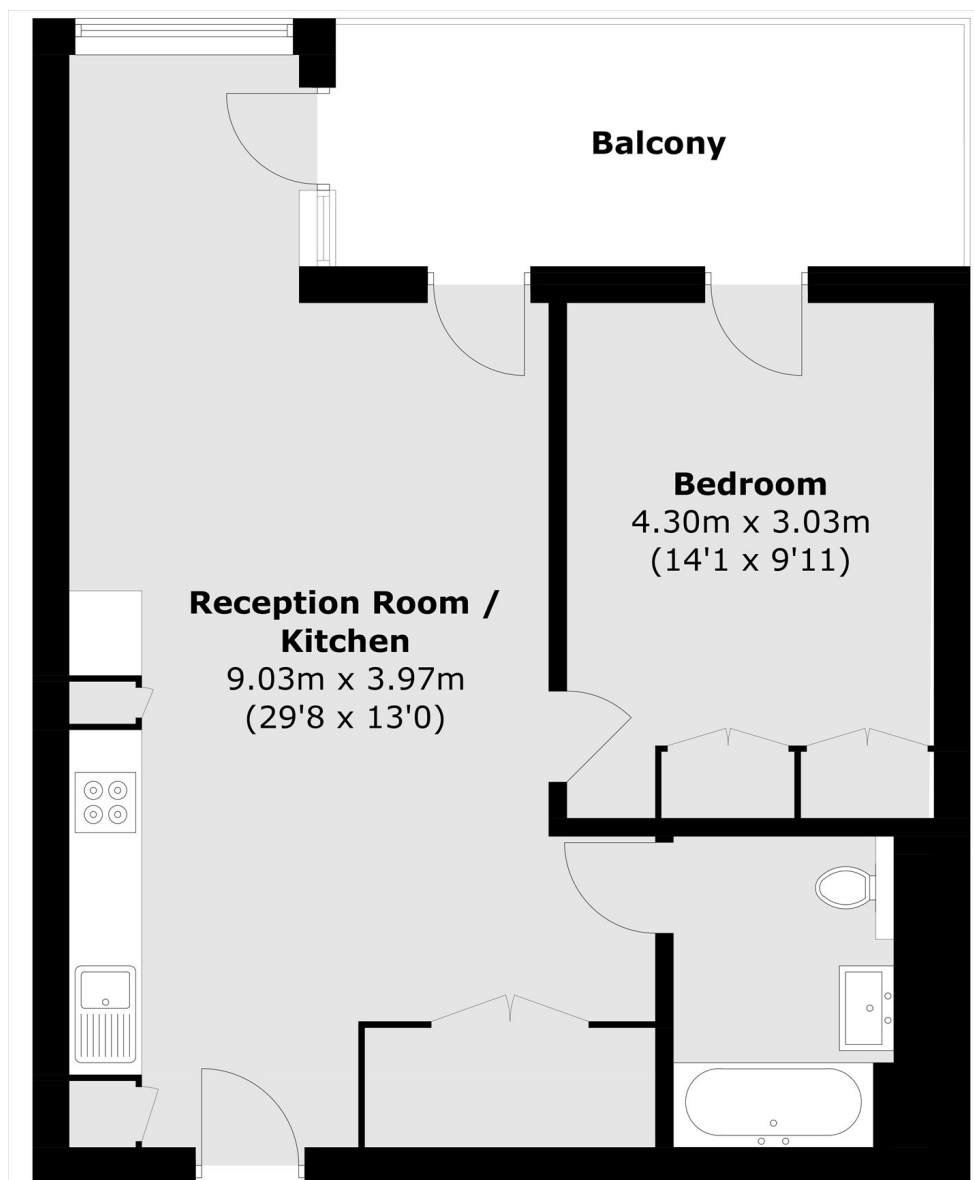
Located close to the shops, bars and restaurants of both Northcote Road and Wandsworth Town.

Features

Stunning Apartment
573 sq ft
24hr Concierge
Private Balcony
Resident's Gym
Communal Gardens



York Place,
London, SW11



Total area (approx.): 53.3 sq. m (573.7 sq. ft)
Balcony area (approx.): 10.4 sq. m (112.0 sq. ft)

Contact

To arrange a viewing call our office on the number below or visit our website.



Energy Rating: B. We aim to make our particulars both accurate and reliable. However they are not guaranteed; nor do they form part of an offer or contract. If you require clarification on any points then please contact us, especially if you're traveling some distance to view. Please note that appliances and heating systems have not been tested and therefore no warranties can be given as to their good working order.