



Bridges Court Road, SW11

£500,000



A beautifully presented two double bedroom, two bathroom apartment on the seventh floor of this riverside block with private balcony.

Entrance hall leads to a spacious open plan living area and kitchen. The principal 16ft double bedroom has river views and en-suite. There is a second double bedroom and further family bathroom. There is an excellent concierge service and allocated parking.

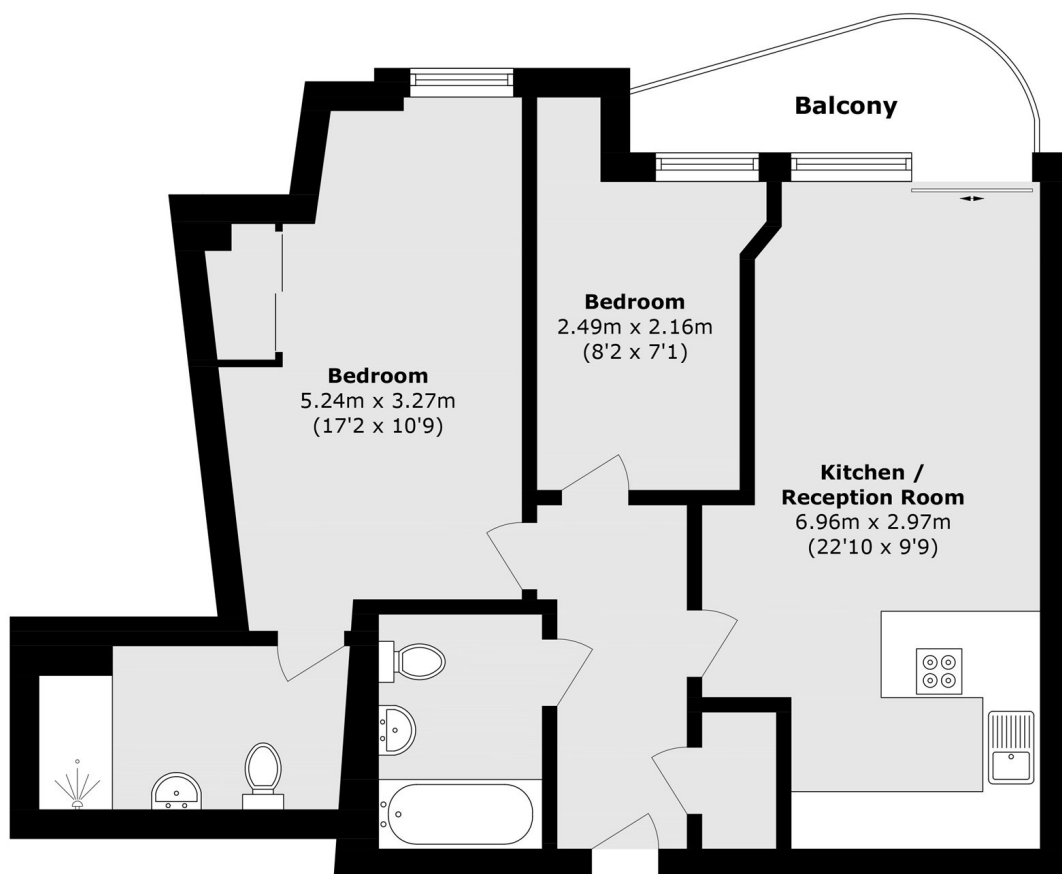
Bridges Court Road runs parallel to The Thames in Battersea within easy reach of Battersea Square, Clapham Junction and Wandsworth Town.

Features

- Beautiful Apartment
- River Views
- Balcony
- Two Bedrooms
- Two Bathrooms
- Parking



Bridges Court Road, London, SW11



Total area (approx.): 63.6 sq. m (684.5 sq. ft)

Balcony area (approx.): 4.4 sq. m (47.3 sq. ft)

Contact

To arrange a viewing call our office on the number below or visit our website.



Energy Rating: B. We aim to make our particulars both accurate and reliable. However they are not guaranteed; nor do they form part of an offer or contract. If you require clarification on any points then please contact us, especially if you're traveling some distance to view. Please note that appliances and heating systems have not been tested and therefore no warranties can be given as to their good working order.