

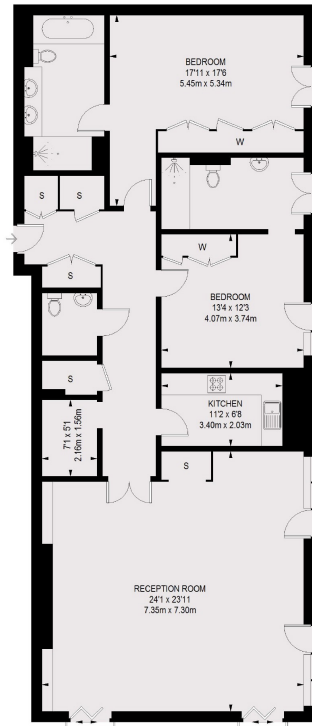


ASHBURTON PLACE

MAYFAIR W1J



AN IMMACULATE AND BEAUTIFULLY DESIGNED TWO BEDROOM APARTMENT
OF 1,593 SQ.FT IN LONDON'S NEWEST LUXURY DEVELOPMENT.



TOTAL APPROX. FLOOR AREA
1587 SQ. FT. (147.42 SQ. M.)

This third floor apartment is the perfect space for entertaining guests, with a superbly designed reception room and dining area, as well as a separate, fully fitted kitchen. The property has two generous double bedrooms, each with stunning en suite bathrooms. With bespoke marble throughout, and lift access the apartment brings a new level of luxury to the Mayfair lettings market.

With only 34 apartments this super exclusive property benefits from round the clock concierge, private parking, comprehensive wellness centre, swimming pool, conference facilities, private cinema

FEATURES

- Two Bedrooms
- Two En Suites
- Lift & Porter
- Swimming Pool & Cinema
- Private Parking
- Excellent Location

Price: £7,500 Per week

We aim to make our particulars both accurate and reliable. However they are not guaranteed; nor do they form part of an offer or contract. If you require clarification on any points then please contact us, especially if you're traveling some distance to view. Please note that appliances and heating systems have not been tested and therefore no warranties can be given as to their working order. Energy Rating: B

Conveniently located close to the elegant boutiques and lavish salons of Mayfair. This exclusive development is in prime position to enjoy shopping in the capital, as well as the natural surroundings of nearby Royal Parks, Green Park and Hyde Park.



WETHERELL
MAYFAIR'S FINEST PROPERTIES

102 Mount Street • London • W1K 2TH
T: 020 7529 5588 E: rentals@wetherell.co.uk

wetherell.co.uk

NO ONE KNOWS MAYFAIR BETTER THAN WETHERELL