



## Park Lane, W1K

£9,800 Per week

This unique six bedroom, five bathroom lateral, penthouse park view apartment is situated on the sixth floor of this 24-hr portered building. It offers air conditioning and has been completely refurbished throughout to a luxurious finish for a stylish and comfortable living experience.

Located on Park Lane at the heart of Mayfair, known by locals as Mayfair village. London's most desirable area bridges the old and the new through its historic buildings, renowned restaurants, elegant bars, luxury boutiques, art galleries, museums and auction houses. From Mount Street and Shepherd Market to Piccadilly and Bond Street,

### Features

- Six Double Bedrooms
- Five Luxury Bathrooms
- 24 hr Concierge
- All Utility and Council Tax bills included
- Ultra-Fast Fibre Wi-Fi
- Excellent Location



## Park Lane, W1K

Hyde Park Residence offers an atmosphere of warmth and calm with the best of London living. Creating secure, comfortable and flexible spaces with a passionate team on hand to expertly take care of your needs.

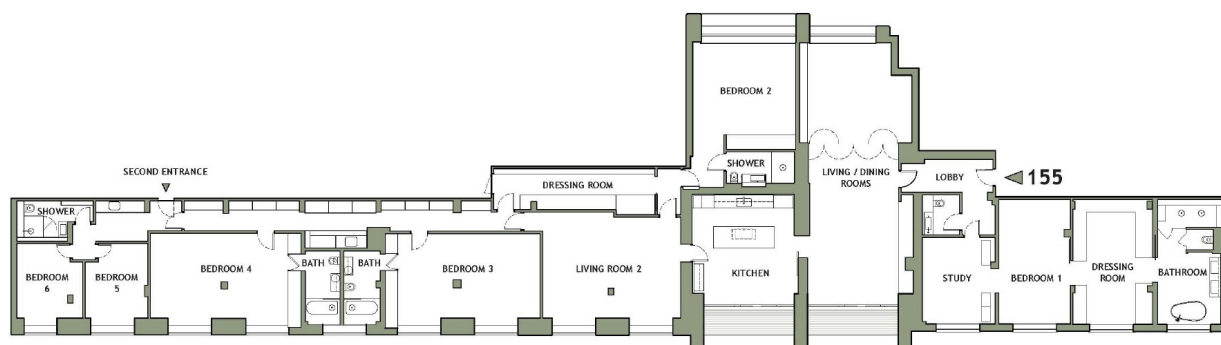
Mayfair village offers everything for an elevated everyday experience. Bordered by three royal parks, at Hyde Park Residence you are never far away from a quiet place to relax and unwind or take your daily exercise. Enjoy the lake and flowerbeds at the foot of Buckingham Palace in St James's Park, the fountains and woodland in Green Park and the changing seasons in spectacular Hyde Park.



# Park Lane, London, W1K

AREA 447SqM 4811SqFt

55 PARK LANE, SEVENTH FLOOR  
APARTMENT 155



## Dexters

Mayfair  
102 Mount Street  
London  
W1K 2TH  
Lettings  
020 7529 5588

Energy Rating: C. We aim to make our particulars both accurate and reliable. However they are not guaranteed; nor do they form part of an offer or contract. If you require clarification on any points then please contact us, especially if you're traveling some distance to view. Please note that appliances and heating systems have not been tested and therefore no warranties can be given as to their good working order.

 **RICS** | Regulated  
Estate Agent  
and Letting Agent

[dexters.co.uk](https://dexters.co.uk)