



Crouch Hill, N4

£750,000

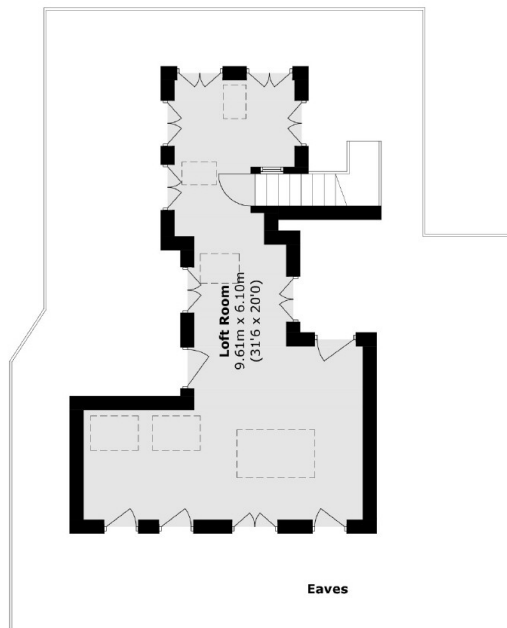
A spacious three bedroom apartment located on the top floor of a Victorian mansion block. This property has an open plan kitchen/reception room, exceptional storage space and stunning views across the city.

Perfectly positioned on the borders of Crouch End, providing easy access to nearby transport links from Finsbury Park and the amenities of Crouch End, Crouch Hill, Stroud Green, Finsbury Park and Archway.

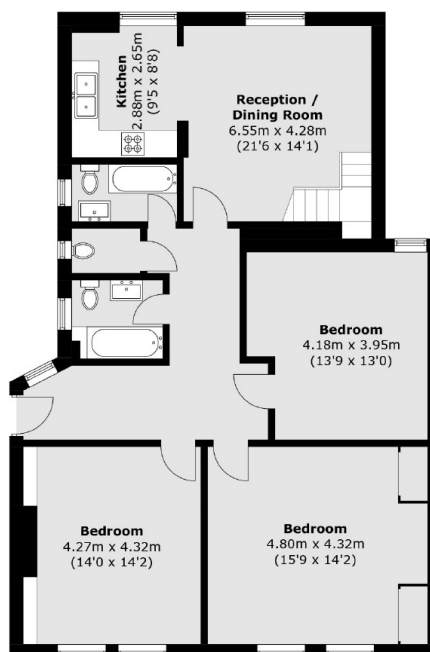
Features

- Three Bedrooms
- Two Family Bathrooms
- Share Of Freehold
- Ample Storage
- Third Floor Flat
- Chain Free

Crouch Hill, London, N4



First Floor



Ground Floor

Total area (approx.): 140.5 sq. m (1,513.4 sq. ft)
(Excluding Eaves)