



Durham Wharf Drive, TW8

£554 Per week

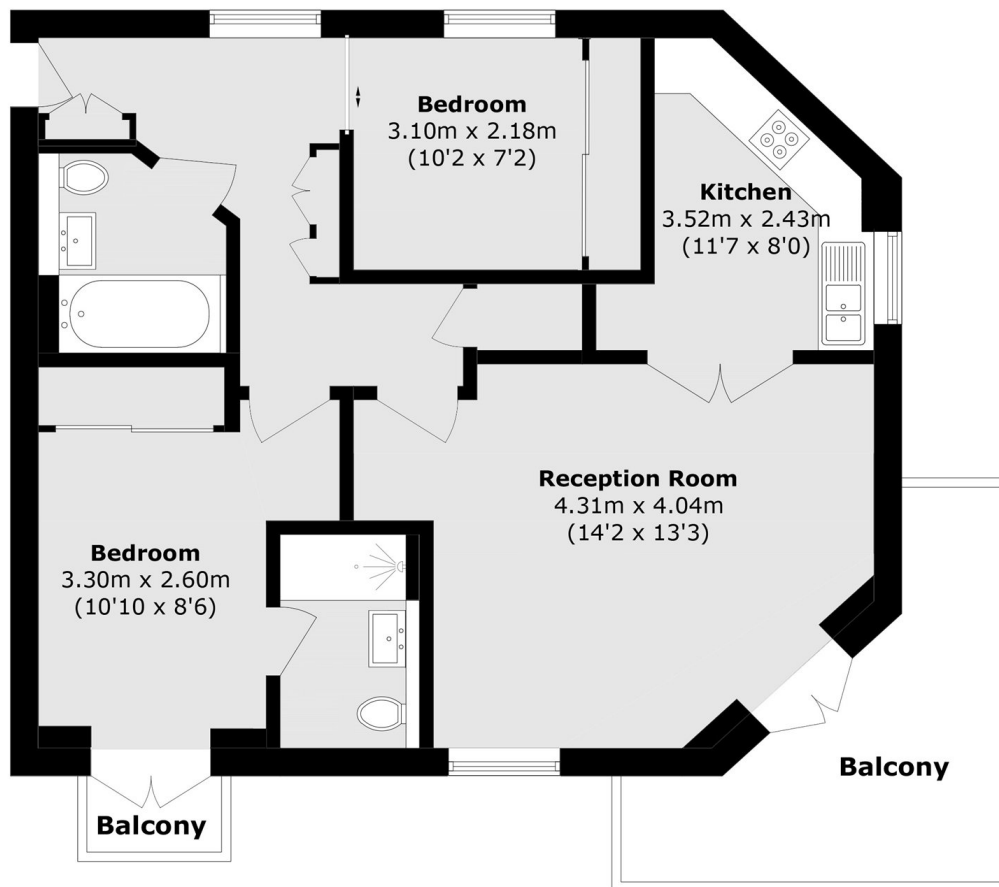
A stunning two double bedroom apartment overlooking River Brent with two bathrooms, separate kitchen, bright reception room, ample storage space and allocated parking. Ideal for a couple or professional sharers.

This property is less than half a mile from both Brentford and Syon Lane stations with their regular services up to Waterloo as well with local shops and restaurants being all around the corner from the property.

Features

- Beautiful Views
- Large Reception Room
- Two Double Bedrooms
- Two Bathrooms
- Separate Kitchen
- Private Balcony

Durham Wharf Drive, Brentford, TW8



Total area (approx.): 65.9 sq. m (709.3 sq. ft)
Balcony area (approx.): 9.7 sq. m (104.4 sq. ft)

National Guidelines (may differ depending on Local Authority).

- E) 4.6 square meters > = no one
- D) 4.6 - 6.5 square meters = 1/2 person (Child up to 10 years)
- C) 6.5 - 8.4 square meters = 1 person
- B) 8.4 - 10.2 square meters = 1 1/2 people
- A) 10.2 square meters < = 2 people

Dexters

Brentford
194 High Street
Brentford
TW8 8LB
Lettings
020 8939 6077

Energy Rating: C. We aim to make our particulars both accurate and reliable. However they are not guaranteed; nor do they form part of an offer or contract. If you require clarification on any points then please contact us, especially if you're traveling some distance to view. Please note that appliances and heating systems have not been tested and therefore no warranties can be given as to their good working order.

 **RICS** | Regulated
Estate Agent
and Letting Agent

dexters.co.uk