



## Holland Gardens, TW8

£553 Per week

A truly stunning apartment within the much sought after Holland Gardens development. The property consists of a large open plan living space with direct access to south facing balcony, a modern kitchen with fully fitted appliances and ample space for dining.

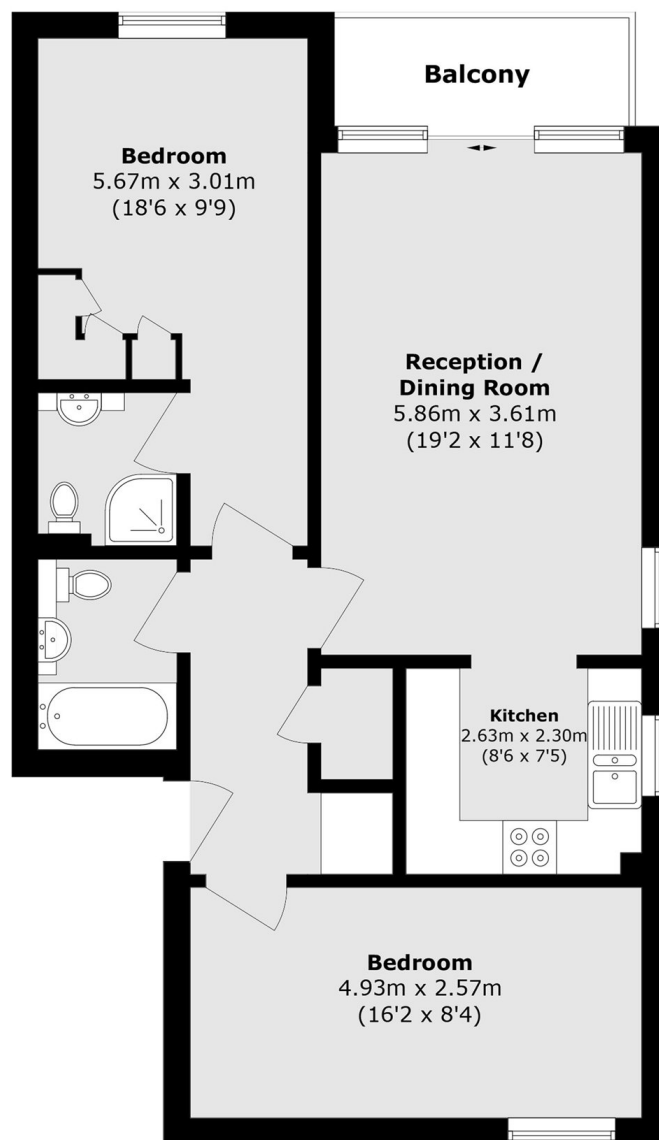
The property further benefits from 24-hour concierge, underground parking space and a on-site gym and sauna complex.

Situated in a popular riverside development with stunning views of the River Thames and under half a mile from Kew Bridge rail station, which has a frequent service into central London. The property Views directly overlooking the World Heritage UNESCO site of the Royal Botanic Gardens of Kew and the 19th century Kew Bridge. Walk along the Thames River Path to several cosy Riverside Pubs within 7 minutes from your doorstep.

### Features

- Two Bedrooms
- Two Bathrooms
- Allocated Parking Space
- Concierge, Gym, Sauna
- Great Transport Links
- Panoramic River Views

# Holland Gardens, Brentford, TW8



Total area (approx.): 69.5 sq. m (748.1 sq. ft)

Balcony area (approx.): 4.2 sq. m (45.2 sq. ft)