



Gloucester Walk, W8

£5,495,000

Arranged over four floors, a five bedroom, three bathroom family home with direct access from a private patio to communal gardens. The lower ground floor of the property could be used as a separate flat.

Gloucester Walk is off Kensington Church Street to the north of Kensington High Street and south of Notting Hill Gate and close to all the shops and restaurants.

Features

Five Bedrooms
Three Bathrooms
Four Floors
Communal Gardens
High Ceilings
Private Patio



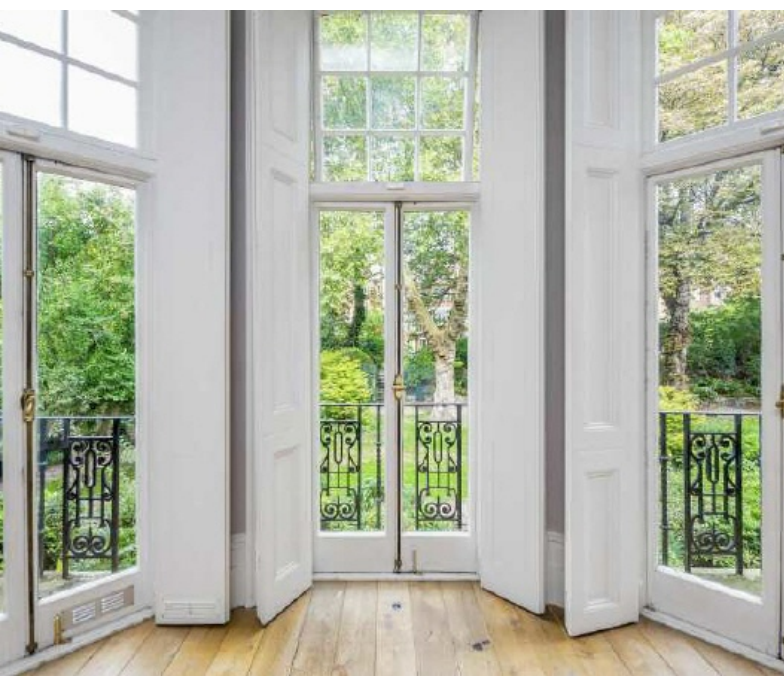
Gloucester Walk, London, W8

This period property offers spacious living with impressive high ceilings and views to the rear over the only large communal gardens in Kensington.

On the raised ground floor, there is a double reception room and kitchen. On the lower ground floor, there are two bedrooms, one en suite, a guest cloakroom and utility/storage area under the vaults.

The whole of the first floor is dedicated to a master suite with a generous dressing room. The top floor has two more double bedrooms and a bathroom.





Gloucester Walk, London, W8



TOTAL APPROX. FLOOR AREA 3081 SQ. FT. (286.23 SQ. M.)

Contact

To arrange a viewing call our office on the number below or visit our website.



Energy Rating: D. We aim to make our particulars both accurate and reliable. However they are not guaranteed; nor do they form part of an offer or contract. If you require clarification on any points then please contact us, especially if you're traveling some distance to view. Please note that appliances and heating systems have not been tested and therefore no warranties can be given as to their good working order.