



## Palace Court, W2

£825,000

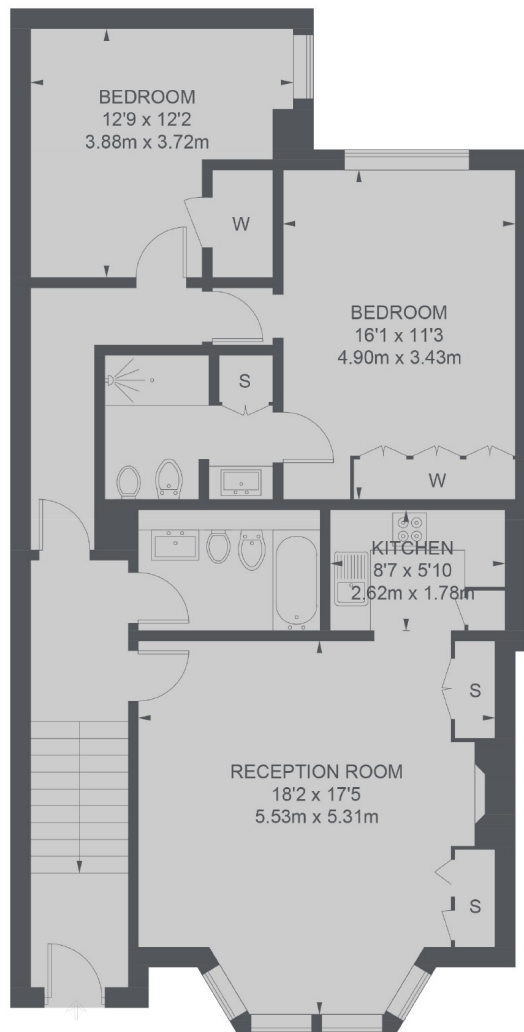
This well proportioned two double bedroom property is located on a prestigious road in Notting Hill. The apartment offers over 1000Sq.Ft and has a generous reception room at the front of the property.

Palace Court provides close proximity to the amenities of Westbourne Grove and Notting Hill Gate as well as the green spaces of Hyde Park and Kensington Gardens.

### Features

Two Double Bedrooms  
Two Bathrooms  
Notting Hill  
Palace Court  
Over 1000 Sq.Ft  
999 Year Lease From 1977

## Palace Court, London, W2



### LOWER GROUND FLOOR

TOTAL APPROX. FLOOR AREA 1003 SQ. FT. (93.2 SQ. M.)

### Contact

To arrange a viewing call our office on the number below or visit our website.



Energy Rating: C. We aim to make our particulars both accurate and reliable. However they are not guaranteed; nor do they form part of an offer or contract. If you require clarification on any points then please contact us, especially if you're traveling some distance to view. Please note that appliances and heating systems have not been tested and therefore no warranties can be given as to their good working order.