



Norfolk Crescent, W2

£4,300,000

Dexters



Norfolk Crescent, London, W2

An impressive, immaculately presented four double bedroom mid terraced home. Arranged over four floors with approximately 2,620 Sq.Ft of accommodation.

The Ground Floor has the main reception and kitchen. On the First Floor you have the master bedroom suite and second reception with balcony.

The Second Floor has three bedrooms, one with en suite and separate shower. The Third Floor has another main reception leading to the roof terrace.

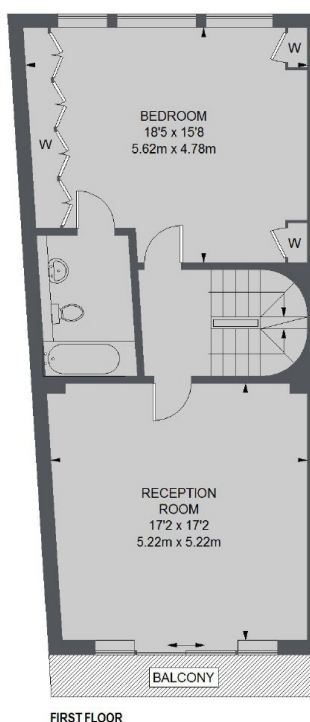
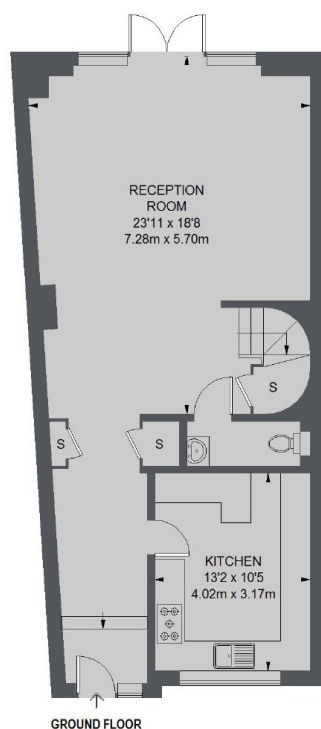
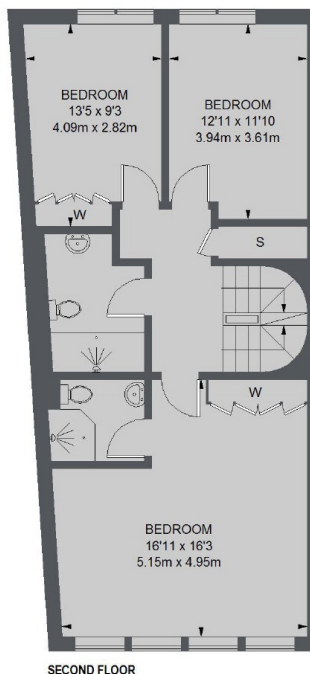
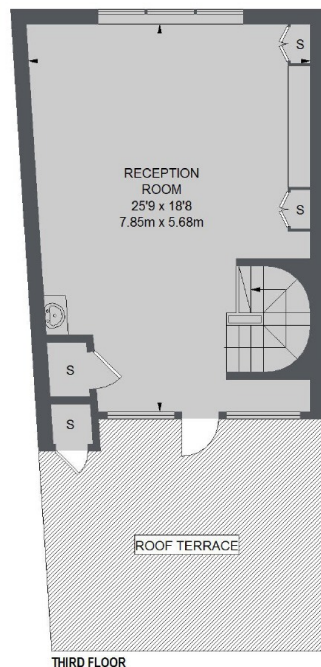
Norfolk Crescent is located in the sought after Hyde Park Estate, with easy reach to Hyde Park, Paddington, Marble Arch and Edgware Road Stations.

Features

Four Double Bedrooms
Three Reception rooms
Roof Terrace & Balcony
2,620/243.41 Sq.M
Immaculate Condition
Leasehold



Norfolk Crescent, London, W2



TOTAL APPROX. FLOOR AREA 2620 SQ. FT. (243.41 SQ. M.)

Dexters

Hyde Park and Bayswater
4-5 Spring Street, London, W2
3RA
Sales
020 7298 1550

Energy Rating: C. We aim to make our particulars both accurate and reliable. However they are not guaranteed; nor do they form part of an offer or contract. If you require clarification on any points then please contact us, especially if you're traveling some distance to view. Please note that appliances and heating systems have not been tested and therefore no warranties can be given as to their good working order.

RICS | Regulated
Estate Agent
and Letting Agent

dexters.co.uk