



## Ladbroke Road, W11

£5,500,000

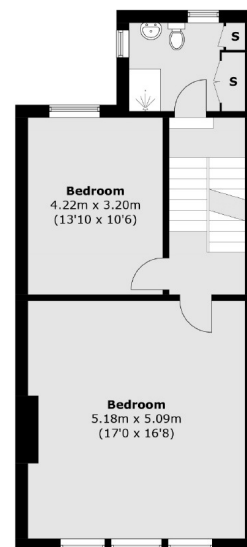
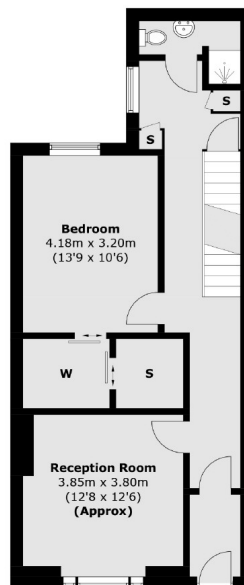
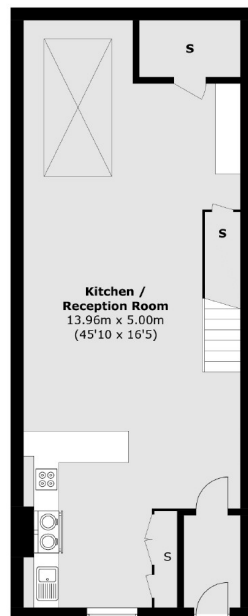
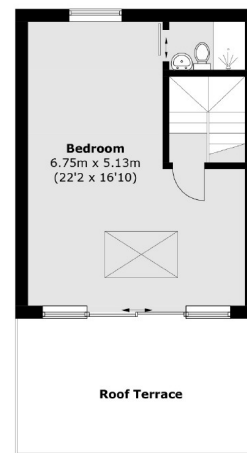
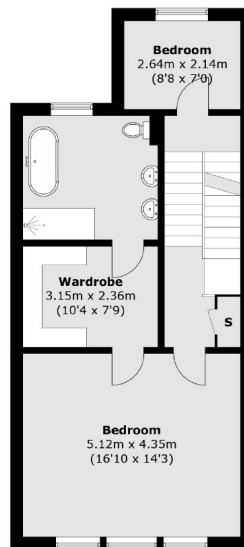
Arranged over five floors, this elegant, beautifully presented and prominent family home is located in prime Notting Hill. Measuring circa 3033 sqft, the house offers five double bedrooms, four bathrooms and a generous south facing roof terrace.

Ladbroke Road is ideally situated for Notting Hill, Portobello Road, and Holland Park with their array of shops, bars and restaurants. There are also excellent transport links with an abundance of bus routes and direct links to the City via Notting Hill Gate underground station.

### Features

- South Facing Roof Terrace
- Additional Study/6th Bedroom
- Five Double Bedrooms
- Two Reception Rooms
- Notting Hill
- Freehold House

## Ladbroke Road, London, W11



Total area (approx.): 281.8 sq. m (3,033.1 sq. ft)  
Roof Terrace (approx.): 18.1 sq. m (194.8 sq. ft)

### Contact

To arrange a viewing call our office on the number below or visit our website.



Energy Rating: . We aim to make our particulars both accurate and reliable. However they are not guaranteed; nor do they form part of an offer or contract. If you require clarification on any points then please contact us, especially if you're traveling some distance to view. Please note that appliances and heating systems have not been tested and therefore no warranties can be given as to their good working order.