



Basing Way, N3

£350,000

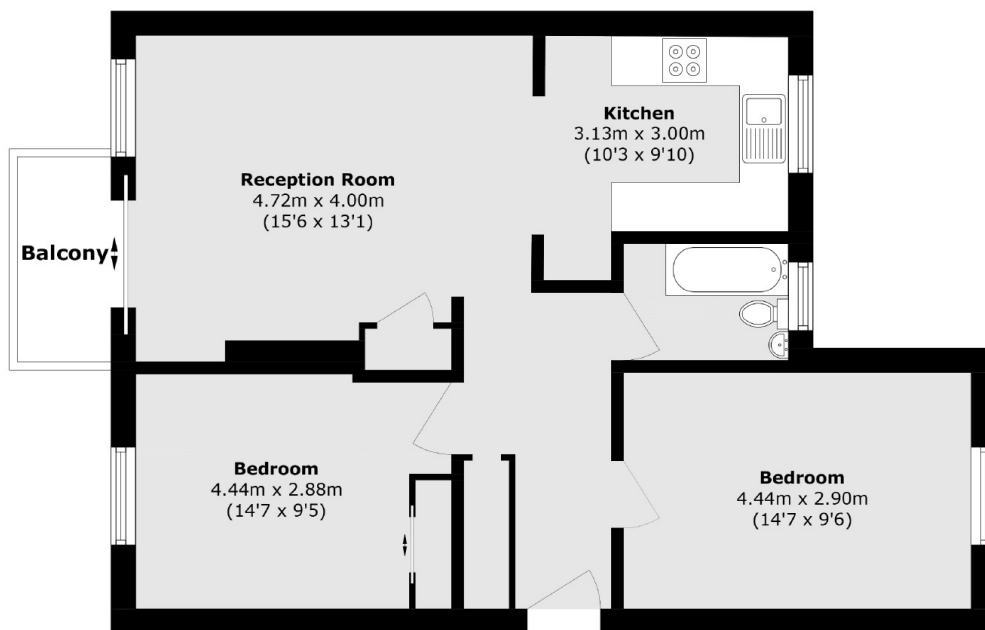
A spacious two bedroom, first floor apartment that comes complete with a large living room with access to private balcony, a modern fitted kitchen and bathroom, storage cupboard and residents parking.

Basing Way is perfectly located for convenient access to local amenities and transport links. Finchley Central station is just 0.5 miles away, and the area falls within the catchment of several highly regarded schools, including Akiva.

Features

- Two Bedrooms
- Modern Fitted Kitchen
- Private Balcony
- Residents Parking
- Near Amenities
- Storage

Basing Way, London, N3



Total area (approx.): 63.0 sq. m (678.1 sq. ft)

Balcony area (approx.): 2.8 sq. m (30.1 sq. ft)

Dexters

Finchley
126 Ballards Lane
Finchley
London
Sales
020 8742 4180

Energy Rating: C. We aim to make our particulars both accurate and reliable. However they are not guaranteed; nor do they form part of an offer or contract. If you require clarification on any points then please contact us, especially if you're traveling some distance to view. Please note that appliances and heating systems have not been tested and therefore no warranties can be given as to their good working order.

 **RICS** | Regulated
Estate Agent
and Letting Agent

[dexters.co.uk](https://www.dexters.co.uk)