



Hendon Lane, N3

£1,495,000

This spacious detached family home offers nearly 3,000 sq ft of living space across three floors.

Hendon Lane is a prime location near highly regarded schools and excellent transport links, including the North Circular, multiple bus routes, and Finchley Central underground station. Additionally, scenic green spaces like Dollis Valley Greenwalk are just a short walk away.

Features

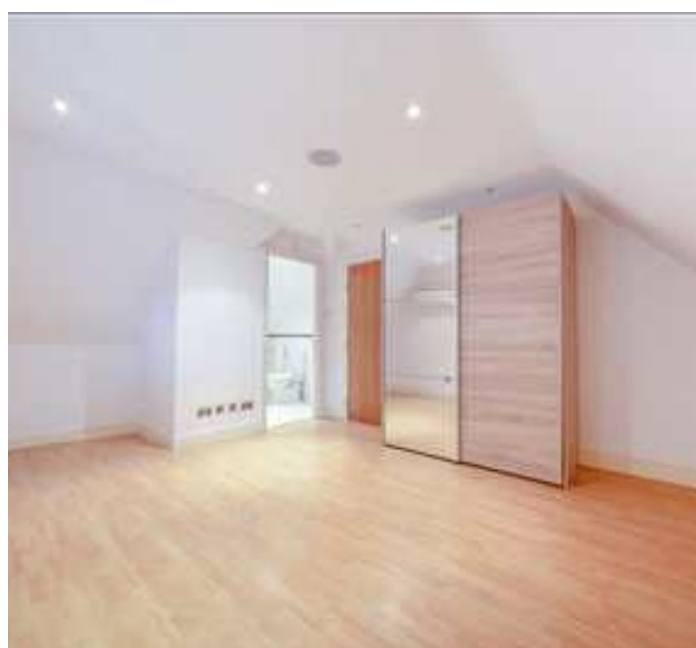
- Six Double Bedrooms
- Five En Suite Bathrooms
- Three Reception Rooms
- South Facing Rear Garden
- Driveway Parking
- Double Garage



Hendon Lane, N3

The property features six generously sized double bedrooms, five en suite bathrooms and a family bathroom.

The property also includes three reception rooms, a detached double garage, south facing rear garden and ample driveway parking.



Hendon Lane, London, N3



Total area (approx.): 268.3 sq. m (2,887.9 sq. ft)
(Excluding Eaves & Garage)
Garage: 36.7 sq. m (395 sq. ft)

Dexters

Finchley
126 Ballards Lane
Finchley
London
Sales
020 8742 4180

Energy Rating: D. We aim to make our particulars both accurate and reliable. However they are not guaranteed; nor do they form part of an offer or contract. If you require clarification on any points then please contact us, especially if you're traveling some distance to view. Please note that appliances and heating systems have not been tested and therefore no warranties can be given as to their good working order.

RICS Regulated
Estate Agent
and Letting Agent

dexters.co.uk