



Squires Lane, N3

£525,000

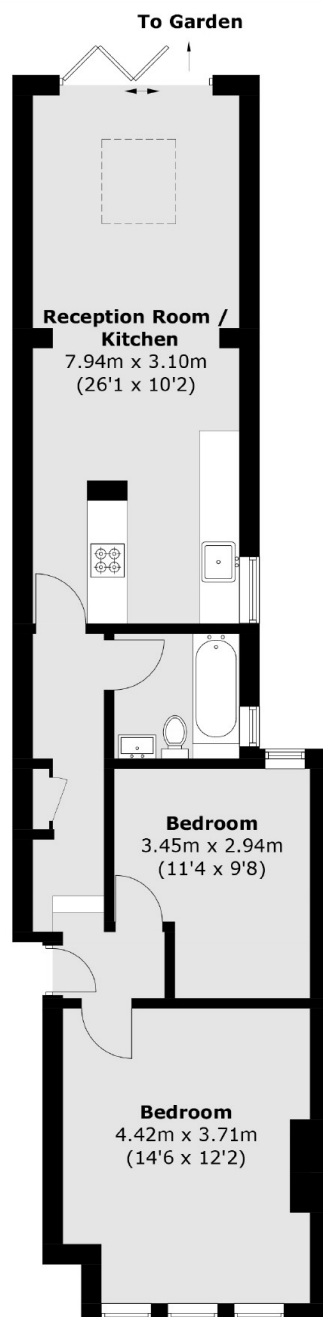
A spacious, extended ground floor conversion apartment featuring two bedrooms, an open-plan kitchen, dining and living area, a family bathroom, a private rear garden, on-street parking and the added advantage of a share of the freehold.

Squires Lane runs adjacent to Ballards Lane, proving easy access to local transport links including Finchley Central tube station and amenities found nearby including green spaces and Great North Leisure Park.

Features

- Private Garden
- Share of Freehold
- Two Bedrooms
- Family Bathroom
- On Street Parking
- No Onward Chain

Squires Lane, London, N3



Total area (approx.): 62.2 sq. m (669.5 sq. ft)

Dexters

Finchley
126 Ballards Lane
Finchley
London
Sales
020 8742 4180

Energy Rating: C. We aim to make our particulars both accurate and reliable. However they are not guaranteed; nor do they form part of an offer or contract. If you require clarification on any points then please contact us, especially if you're traveling some distance to view. Please note that appliances and heating systems have not been tested and therefore no warranties can be given as to their good working order.

 **RICS** | Regulated
Estate Agent
and Letting Agent

[dexters.co.uk](https://www.dexters.co.uk)