



Edgewood Mews, N3

£475,000

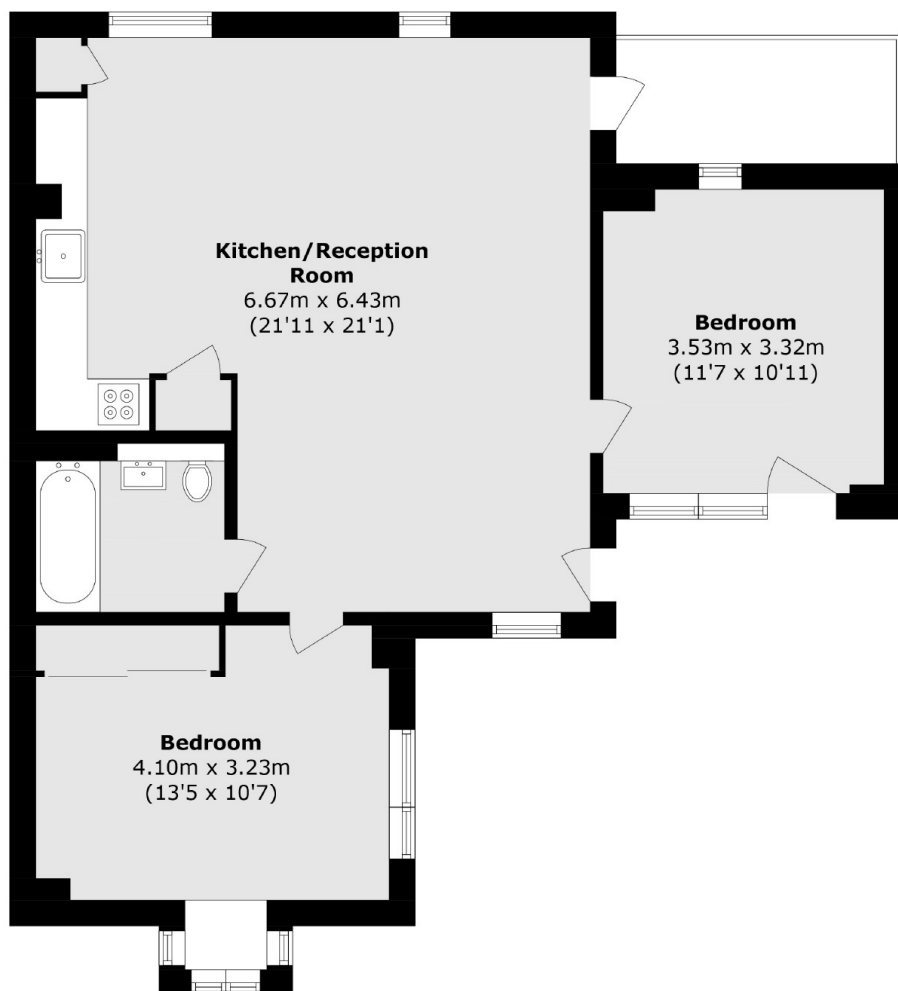
A well presented two bedroom apartment set within this modern development. This property has a spacious open plan kitchen/ reception room, security services and a private balcony.

Edgewood Mews is a highly sought-after residential area for families, known for its excellent transport links, including Finchley Central and Golders Green tube stations, as well as proximity to top-rated local schools and places of worship, which adds to its strong appeal.

Features

- Two Double Bedrooms
- Modern Development
- Open Plan Kitchen/Reception
- Excellent Transport Links
- Private Balcony
- Secure Underground Parking

Edgewood Mews, London, N3



Total area (approx.): 69.3 sq. m (745.9 sq. ft)
Balcony area (approx.): 4.6 sq. m(49.5 sq. ft)