



The Bay, Plot 28 Arcot Manor, Cramlington

Ryedales consider it a privilege to offer to the market on behalf of BELLWAY HOMES the aforementioned NEW 4 Bedroom Detached House (Style - The Bay) located within this prestigious residential development of Arcot Manor, on the Western periphery of Cramlington, allowing for direct access to all town amenities and major road links including the A1 and A19 trunk roads, Newcastle City Centre, Newcastle International Airport, Tyne Tunnel, Northumbrian Countryside and the coast.

- NEW BELLWAY HOME
- Detached House
- 4 Bedrooms
- Cloakroom/wc
- Dining Room
- Kitchen/Family Room
- 2 En-suite Facilities
- Garage
- Further Details Available

Price £379,995

www.ryedales.com

Accommodation Comprises

Entrance Hall

Cloakroom/wc

Living Room

20'9" x 11'5" (6.32m x 3.48m)

Dining Room

10'5" x 10'2" (3.18m x 3.10m)

Family Room

14'2" x 8'4" (4.32m x 2.54m)

Kitchen

14'2" x 9'4" (4.32m x 2.84m)

First Floor Landing

Bedroom One

11'6" x 11'1" (3.51m x 3.38m)

En-suite

Dressing Area

Bedroom Two

11'7" x 10'11" (3.53m x 3.33m)

Bedroom Three

11'7" x 9'6" (3.53m x 2.90m)

Bedroom Four

10'6" x 8'11" (3.20m x 2.72m)

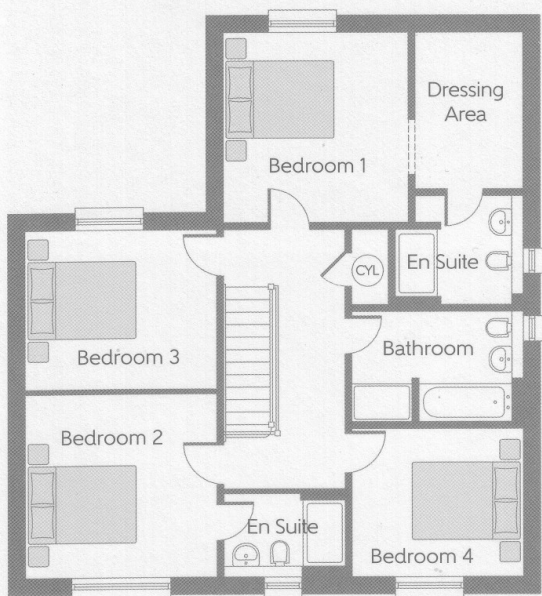
Bathroom/wc

Garage

Agents Notes

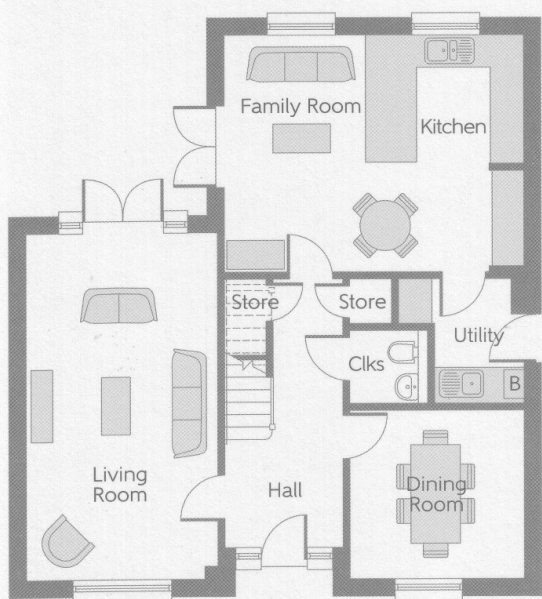
Estimated 1st year estate charge - £70.00
per annum

The aforementioned details have been
prepared in conjunction with information
supplied by Bellway Homes North East
Limited prices correct at 21st November
2019.



First Floor

Bedroom 1	3.512m x 3.384m	11'6" x 11'1"
Bedroom 2	3.528m x 3.327m	11'7" x 10'11"
Bedroom 3	3.528m x 2.900m	11'7" x 9'6"
Bedroom 4	3.188m x 2.727m	10'6" x 8'11"



Ground Floor

Kitchen	4.313m x 2.890m	14'2" x 9'4"
Family Room	4.313m x 2.585m	14'2" x 8'4"
Living Room	6.315m x 3.466m	20'9" x 11'5"
Dining Room	3.165m x 3.102m	10'5" x 10'2"