



Dowells Street, SE10

£425,000

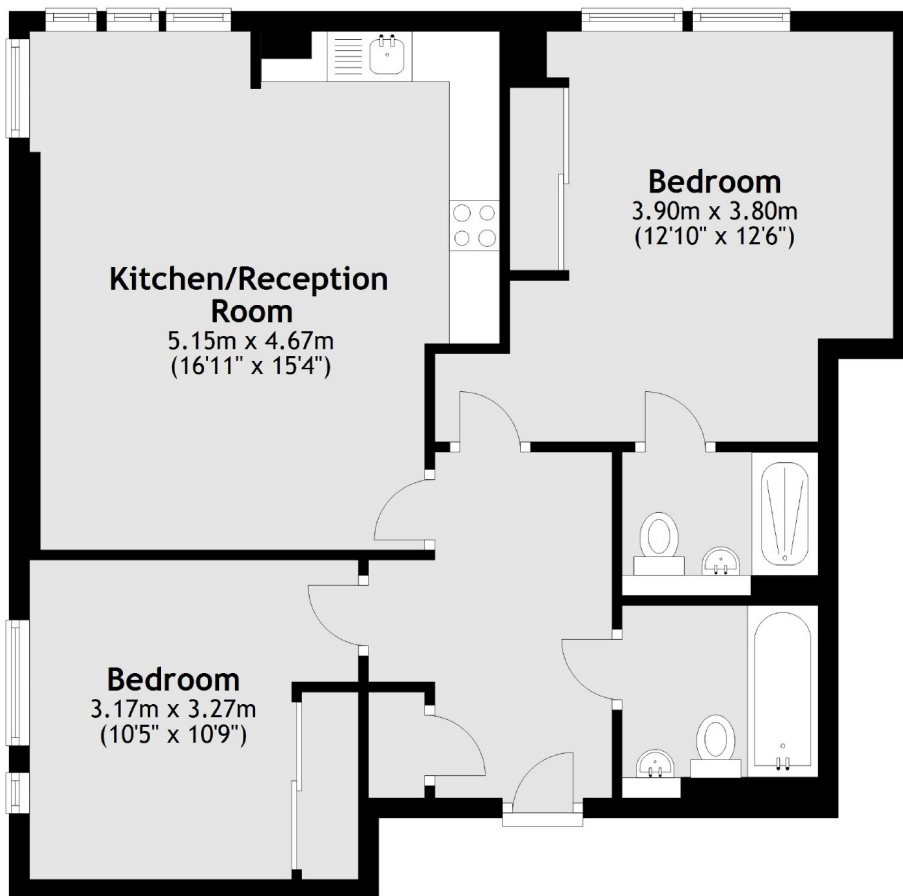
Located on the ninth floor and offering 700 sq.ft of ample living space is this two bedroom home located in one of SE10's sought after riverside developments. Features to include open plan reception room, allocated parking space and no onward chain.

Greenwich offers a fantastic range of amenities such as restaurants, bars and cafes (many of which sit on the River Thames), the famous Greenwich market, and of course the stunning Greenwich Park. For great transport links into central London, Cutty Sark and Greenwich Stations are under a quarter of a mile away.

Features

- Riverside Development
- Open Plan Reception
- Two Bedrooms
- Two Bathrooms
- Allocated Parking
- No Onward Chain

Dowells Street, London, SE10



Total area: approx. 64.5 sq. metres (694.2 sq. feet)