



Park Row, SE10
£1,800,000

Dexters



Park Row, SE10

An exceptional four-story end-of-terrace residence in the heart of Greenwich, bordering the UNESCO World Heritage site. Striking mid-century modern and Scandinavian influences blend seamlessly with classic architectural elegance. This impressive four-bedroom home enjoys uninterrupted double-aspect vistas of the Royal Naval College & Queen's House. The property further benefits from off street parking.

Meticulously reimagined by its award-winning architect owner, this four-storey home features a striking timber-framed rear extension, expanding its footprint and enhancing light and space. Thoughtful planning balances open-plan living with private, intimate areas.

The ground floor hosts a bespoke rosewood kitchen with high-spec appliances, flowing into a bright living space framed by oversized windows, a vast skylight, and a fully openable rear facade leading to a landscaped garden. Upstairs, a first-floor sitting room offers beautiful dual-aspect views, while the second floor provides three double bedrooms, including one with access to a Carrara marble family bathroom.

The top floor is dedicated to the master suite, with floor-to-ceiling windows, an ensuite, and a roof terrace showcasing panoramic views over the Maritime Greenwich UNESCO World Heritage Site.

Features

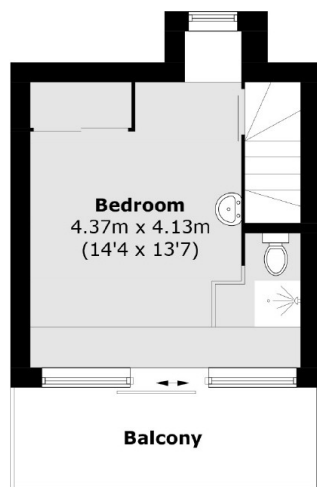
- Architecturally Designed
- Sought After Location
- Two Bathrooms
- Downstairs W,C
- Off Street Parking
- Chain Free





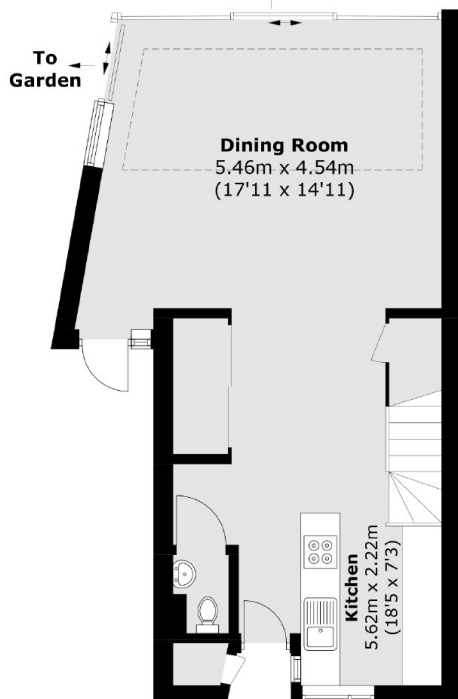


Park Row, London, SE10

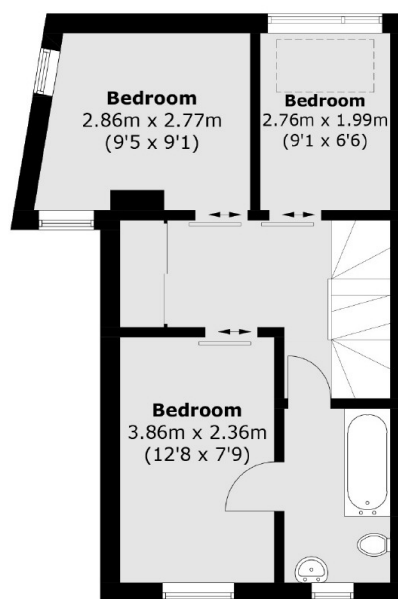


Third Floor

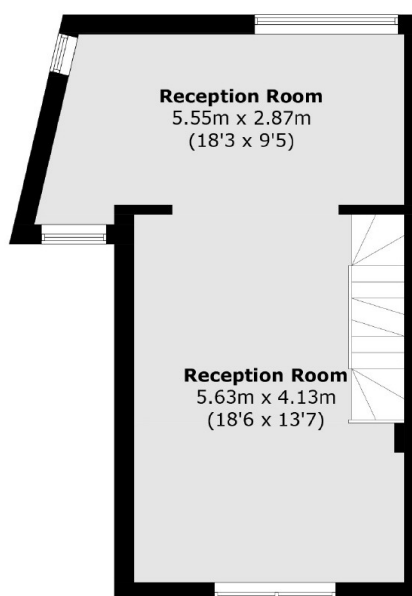
To Garden



Ground Floor



Second Floor



First Floor

Total area (approx.): 140.5 sq. m (1,512.3 sq. ft)
External Cupboard: 0.5 sq. m (5.4 sq. ft)
Balcony: 7.1 sq. m (76.4 sq. ft)

Dexters

Greenwich
275 Greenwich High Road
Greenwich
London
Sales
020 8815 2215

Energy Rating: . We aim to make our particulars both accurate and reliable. However they are not guaranteed; nor do they form part of an offer or contract. If you require clarification on any points then please contact us, especially if you're traveling some distance to view. Please note that appliances and heating systems have not been tested and therefore no warranties can be given as to their good working order.



dexters.co.uk