



Tidemill Square, SE10

£850,000

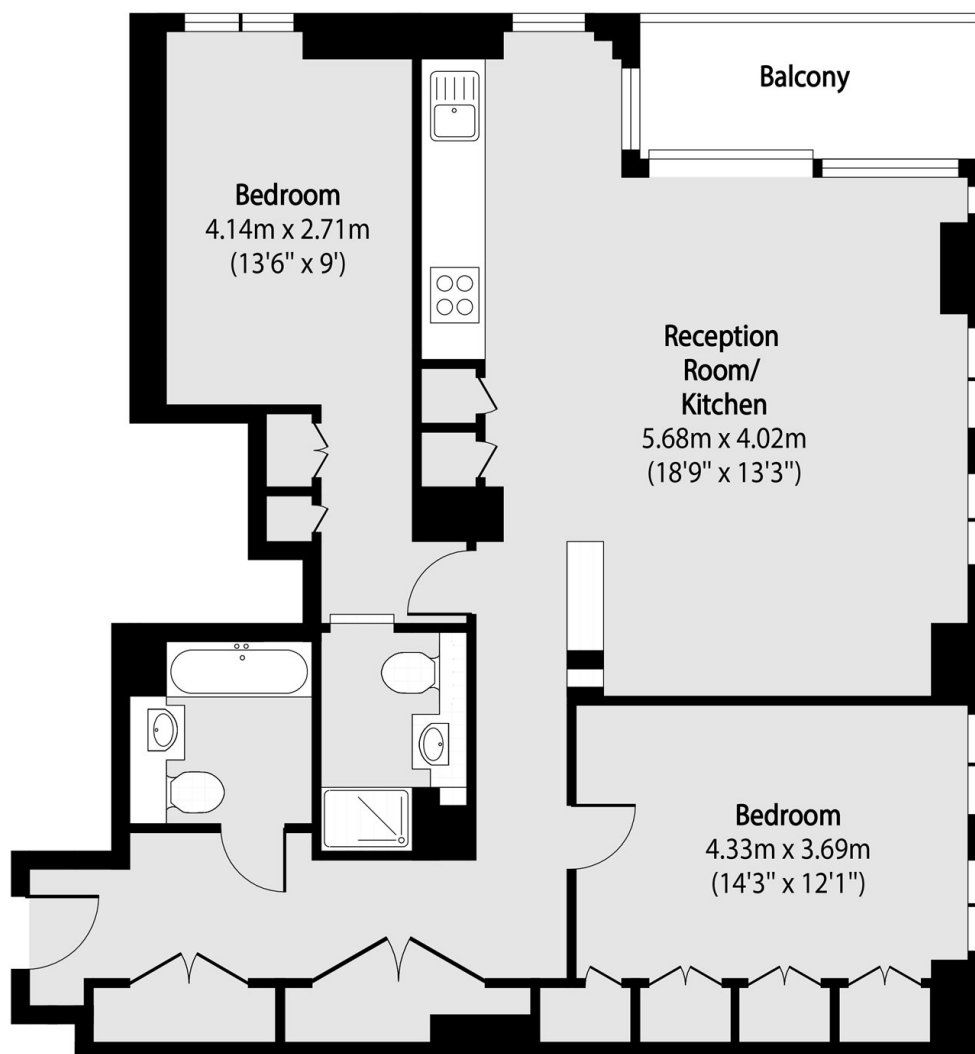
This luxurious two double bedroom two bathroom apartment with gorgeous views across the River Thames. Situated in this prestigious building and benefitting from a private balcony overlooking the river as well as amenities such as a gym, concierge, cinema room and communal roof terrace

Greenwich Peninsula is a modern community that has been designed with the residents in mind offering a range of amenities, which include North Greenwich Station for direct connections to Canary Wharf, London Bridge and The West

Features

- Amazing River Views
- Two Bedrooms
- Two Bathrooms
- Immaculate Throughout
- Cinema Room
- Concierge
- 15th Floor

Tidemill Square, London, SE10



Total area (approx): 91.05 sq m (980 sq. ft)

Balcony total area (approx): 5.55 sq m (60 sq. ft)

Dexters

Greenwich
275 Greenwich High Road
Greenwich
London
Sales
020 8815 2215

Energy Rating: B. We aim to make our particulars both accurate and reliable. However they are not guaranteed; nor do they form part of an offer or contract. If you require clarification on any points then please contact us, especially if you're traveling some distance to view. Please note that appliances and heating systems have not been tested and therefore no warranties can be given as to their good working order.

 **RICS** | Regulated
Estate Agent
and Letting Agent

[dexters.co.uk](https://www.dexters.co.uk)